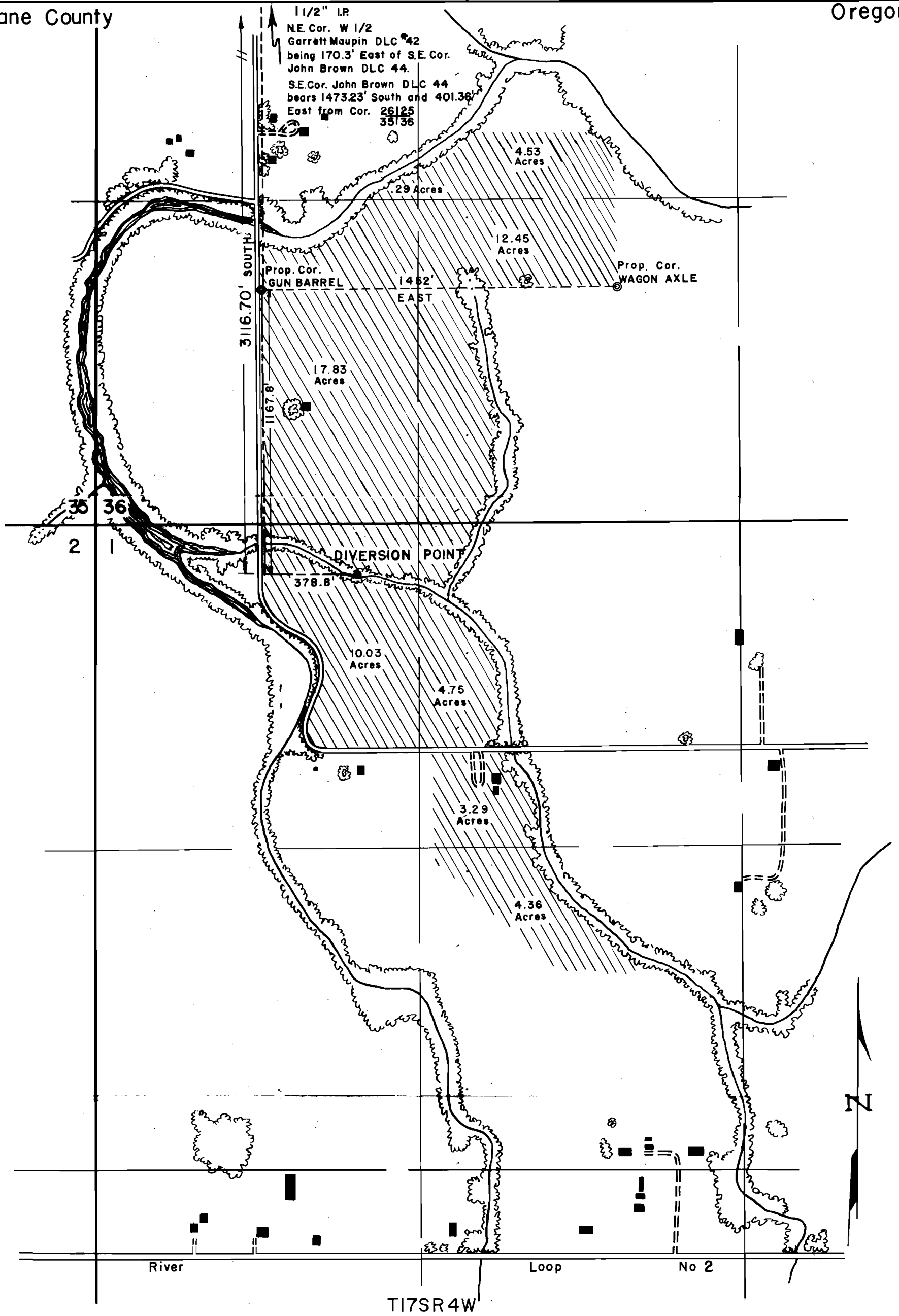


1 1/2" I.P.
 NE Cor. W 1/2
 Garrett Maupin DLC #42
 being 170.3' East of S.E. Cor.
 John Brown DLC 44.
 S.E. Cor. John Brown DLC 44
 bears 1473.23' South and 401.36'
 East from Cor. 26125
 35136



----- Registered Survey by Wm. Thomson
 - - - - - Survey by H.G. CHICKERING JR.

SCALE 1" = 400'

Prepared for *Page Walton* by the Office of
 H.G. Chickering Jr. Consulting Photogrammetrist
 Inc. Eugene, Oregon May 7, 1958 From Vertical
 Aerial Photography Dated May, 1957

Application No. 32538
Permit No. 25883

I Hereby Certify that this Map was Made from Notes Taken During an Actual Survey
 Made by H.G. Chickering Jr. Consulting Photogrammetrist Inc., on May 13, 1958.