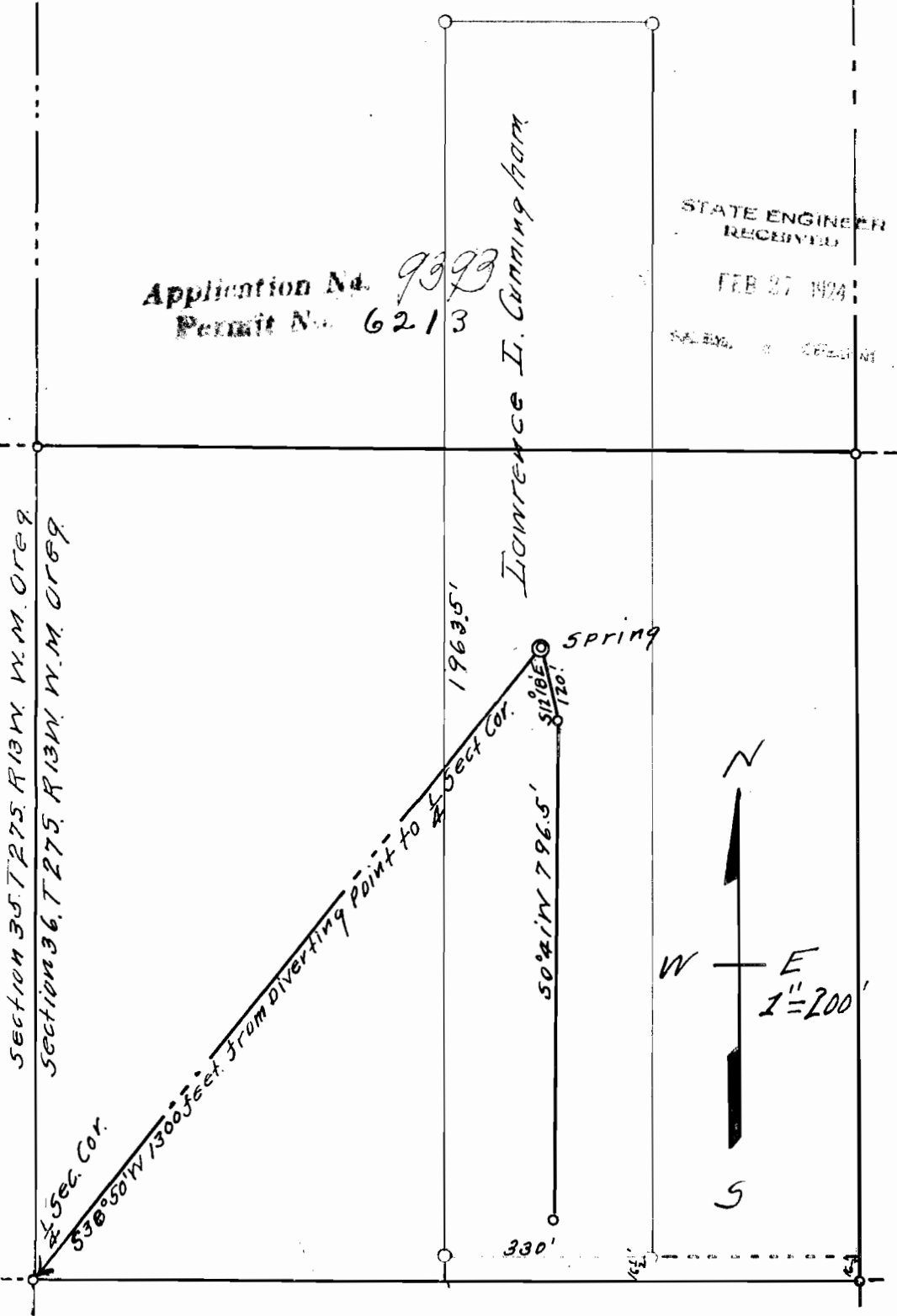


9993

Application No. 9993
Permit No. 6213

STATE ENGINEER
RECEIVED
FEB 27 1924
SALMON DIVISION

Section 35, T. 27 S. R. 13 W. W. M. OR. 89
Section 36, T. 27 S. R. 13 W. W. M. OR. 89



CERTIFICATE OF SURVEYOR

I, A. N. Gould of Coquille, Coos Co., Oregon do hereby certify that this map was made from notes taken during an actual survey made by me on Feb 16th 1924 and that it correctly represents the works described in the accompanying Application.

A. N. Gould
Surveyor.

A. N. Gould.