

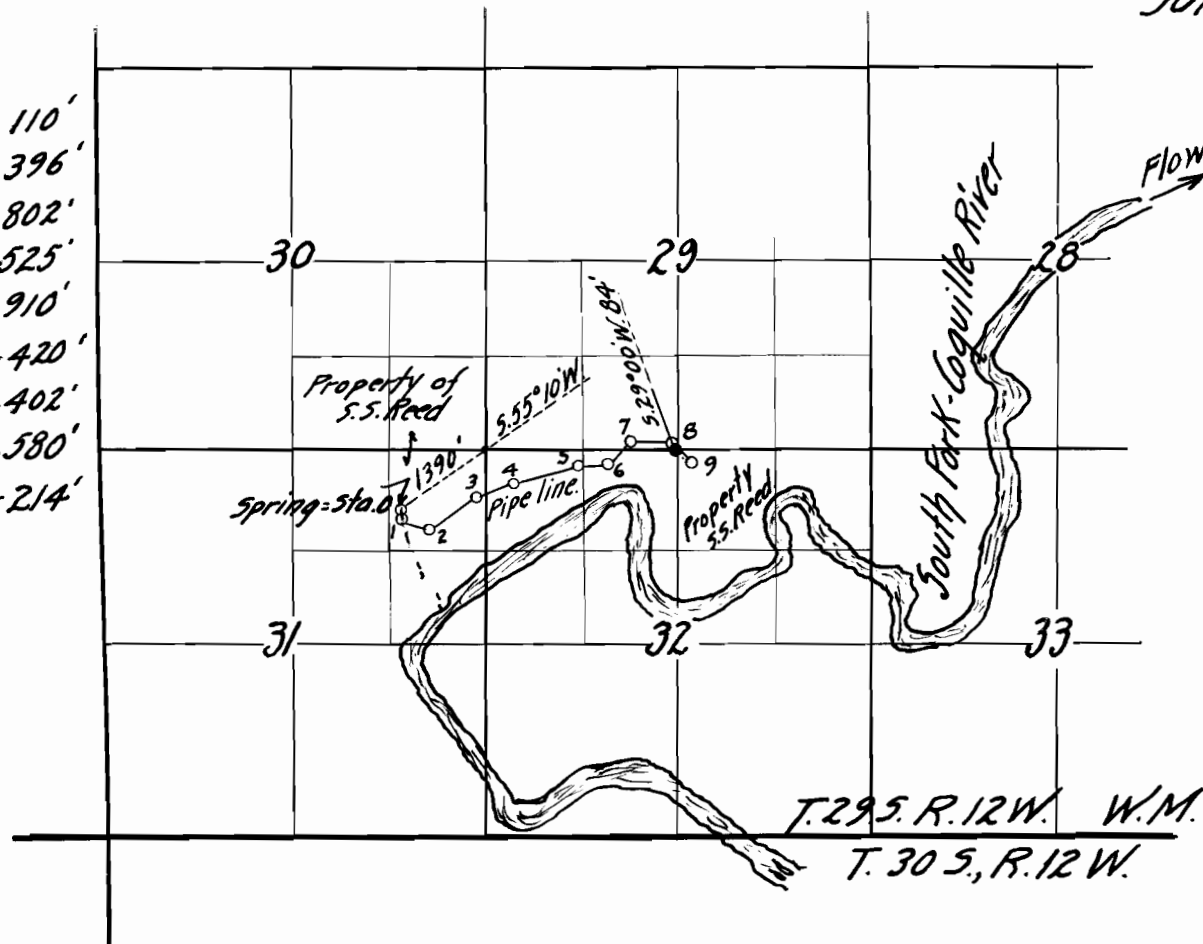
I, Geo. E. Tonney, of Myrtle Point, do hereby certify that this map was made from notes during an actual survey made by me on Aug. 9-1915 and that it correctly represents the works described in the accompanying application together with the location of streams in the near vicinity

Geo. E. Tonney.
Surveyor.

1st Pipe Line.

- Sta. 0 to 1. $522^{\circ}30' E. - 110'$
- " 1 " 2 $5.73^{\circ}15' E. - 396'$
- " 2 " 3 $N. 55^{\circ}30' E. - 802'$
- " 3 " 4 $N. 70^{\circ}15' E. - 525'$
- " 4 " 5 $N. 76^{\circ}02' E. - 910'$
- " 5 " 6 $N. 82^{\circ}00' E. - 420'$
- " 6 " 7 $N. 44^{\circ}10' E. - 402'$
- " 7 " 8 $5.89^{\circ}03' E. - 580'$
- " 8 " 9 $5.45^{\circ}00' E. - 214'$

Courses True.



Aug. 10th. 1915
Scale, 2" = 1 mile.

OFFICE OF STATE ENGINEER
RECEIVED
AUG 12 1915
SALEM, OREGON.

4457
2596

Map to accompany application for permit to appropriate Water,
from a Spring for S.S. Reed.