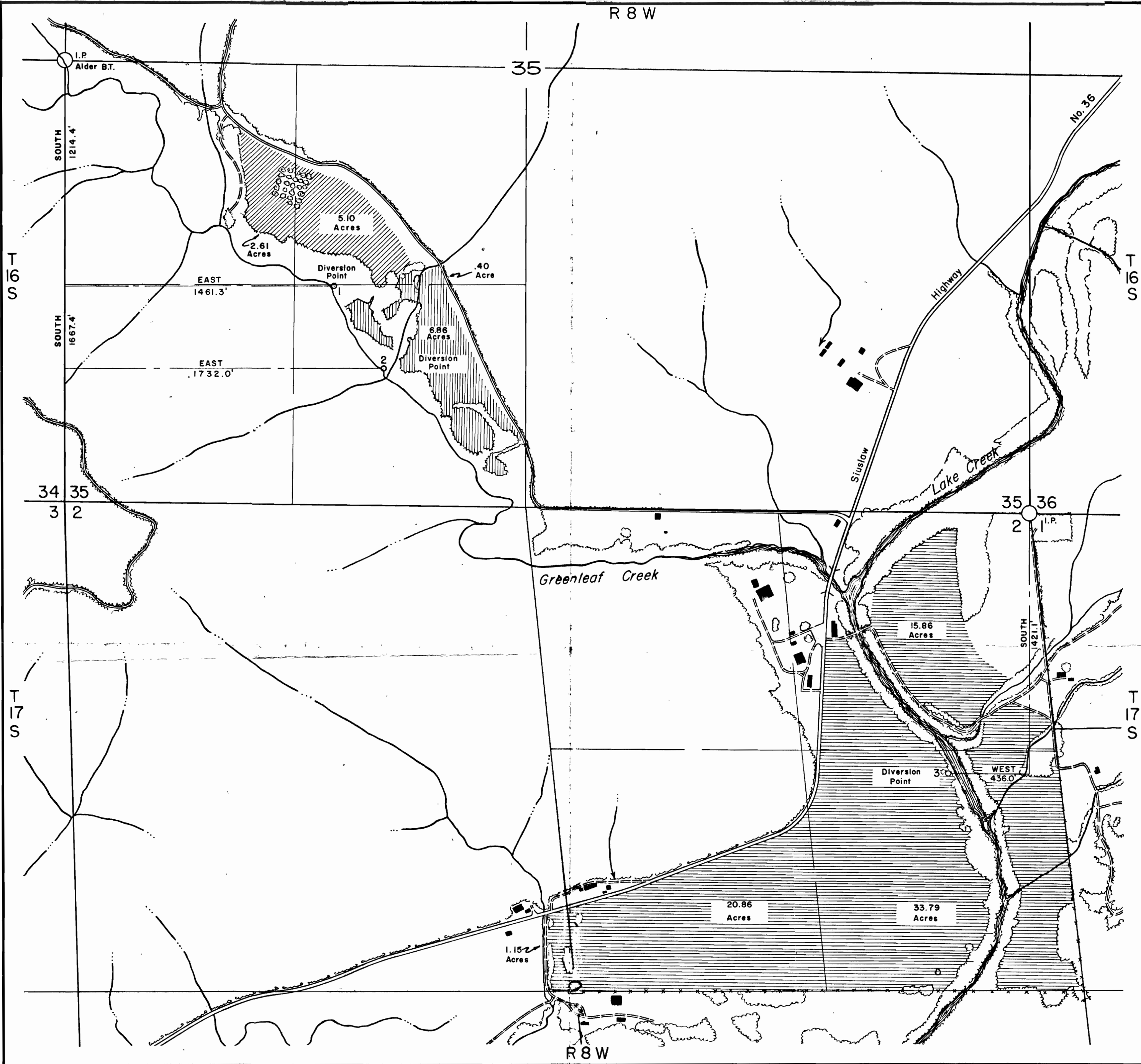


R 8 W



Scale 1" = 400'

Prepared for Vergil Parker by the Office of H. G. Chickering Jr.,  
 Consulting Photogrammetrist Inc., Eugene, Oregon, December 23, 1958,  
 from Vertical Aerial Photography Dated 1953.

I Hereby Certify that this Map was Made from Notes Taken During an Actual  
 Survey by the Office of H.G. Chickering Jr., Consulting Photogrammetrist Inc., on  
 November 26, 1958.

Application No. 22962  
 832983  
 Permit No. 26068  
 + 26084

