

KEND SPRINGS RANCH

Sketch to accompany Water Application of Harold Mallory
situated in Sections 14, 15, 22, 23, 24, T 38 S, R 12 E W 1/2, Klamath County,
OREGON

Surveyed, August, 1955
Re-mapped 12-13-56.

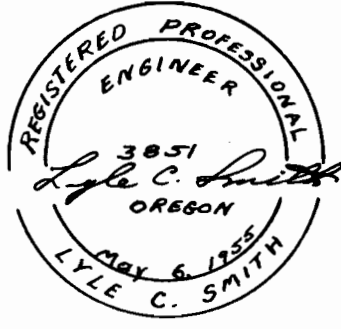
Total Irrigable Area = 644[±] Acres
Total Length Main Canals = 39,200 Ft.

Scale: 1" = 660'
R 12 E R 13 E
13 18
24 19

T 38 S

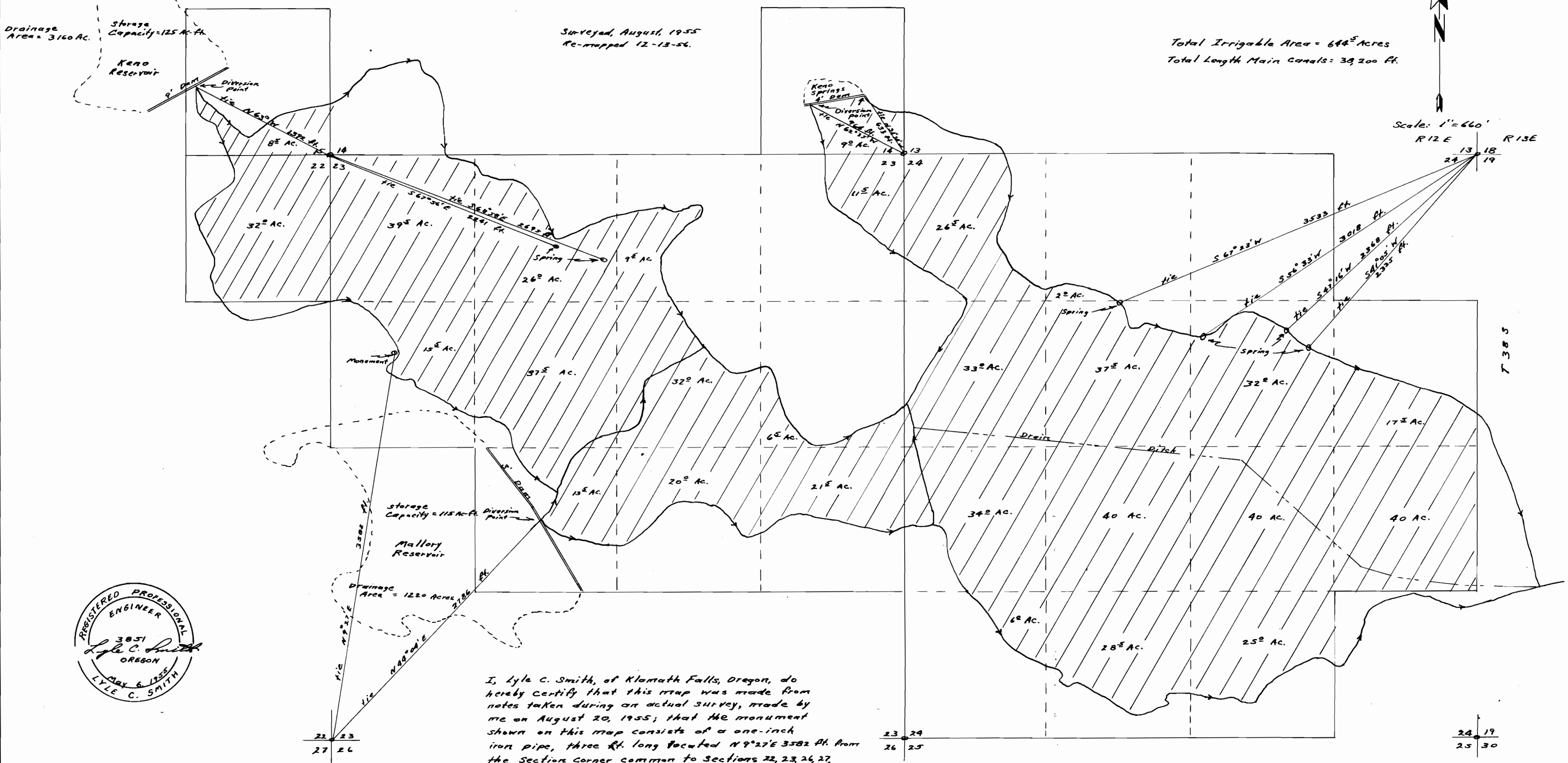
Drainage Area = 3160 Ac.
Storage Capacity = 125 Ac.-ft.
Keno Reservoir

Storage Capacity = 115 Ac.-ft.
Mallory Reservoir



I, Lyle C. Smith, of Klamath Falls, Oregon, do hereby certify that this map was made from notes taken during an actual survey, made by me on August 20, 1955; that the monument shown on this map consists of a one-inch iron pipe, three ft. long located N 9° 27' E 3582 Ft. from the Section corner common to Sections 22, 23, 24, 27, T 38 S, R 12 E W 1/2, Klamath County, Oregon.

Lyle C. Smith



Application No. R-31693 + 31694
Permit No. R-2247 + 26216