

*Tr Line*

*Sec. Cor.*

# PLAT

ACCOMPANYING PORT ORFORD SCHOOL DISTRICT'S  
APPLICATION FOR PERMIT TO APPROPRIATE WATER  
SITUATED IN SE 1/4 OF NE 1/4 OF SEC. 5

T. 33 S. R. 15 W. W. M.

Scale = 1" to 200'

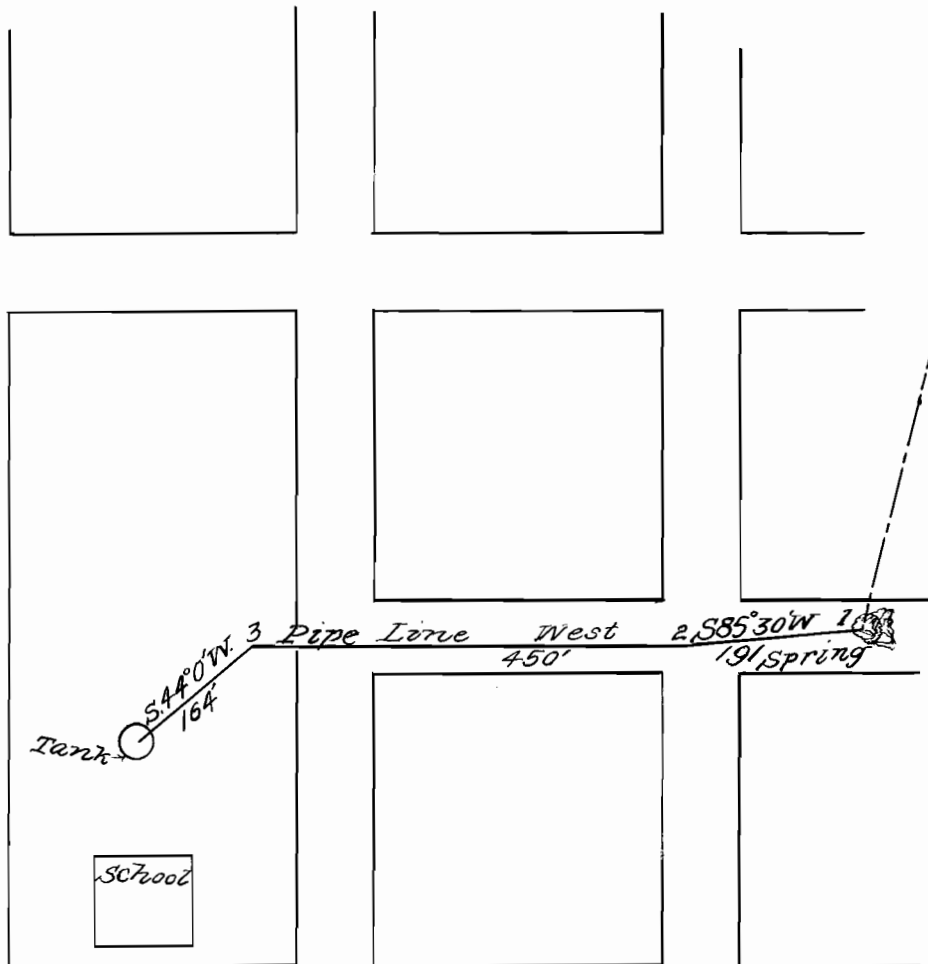
July 23, 1915.

I, Chas. Fitzhugh of Denmark, Oregon, do hereby certify that this map was made from notes taken during an actual survey made by me on July 23, 1915, and that it correctly represents the works described in the accompanying application.

*Chas. Fitzhugh.* Surveyor.

4463

2631



*Sec. Line*