

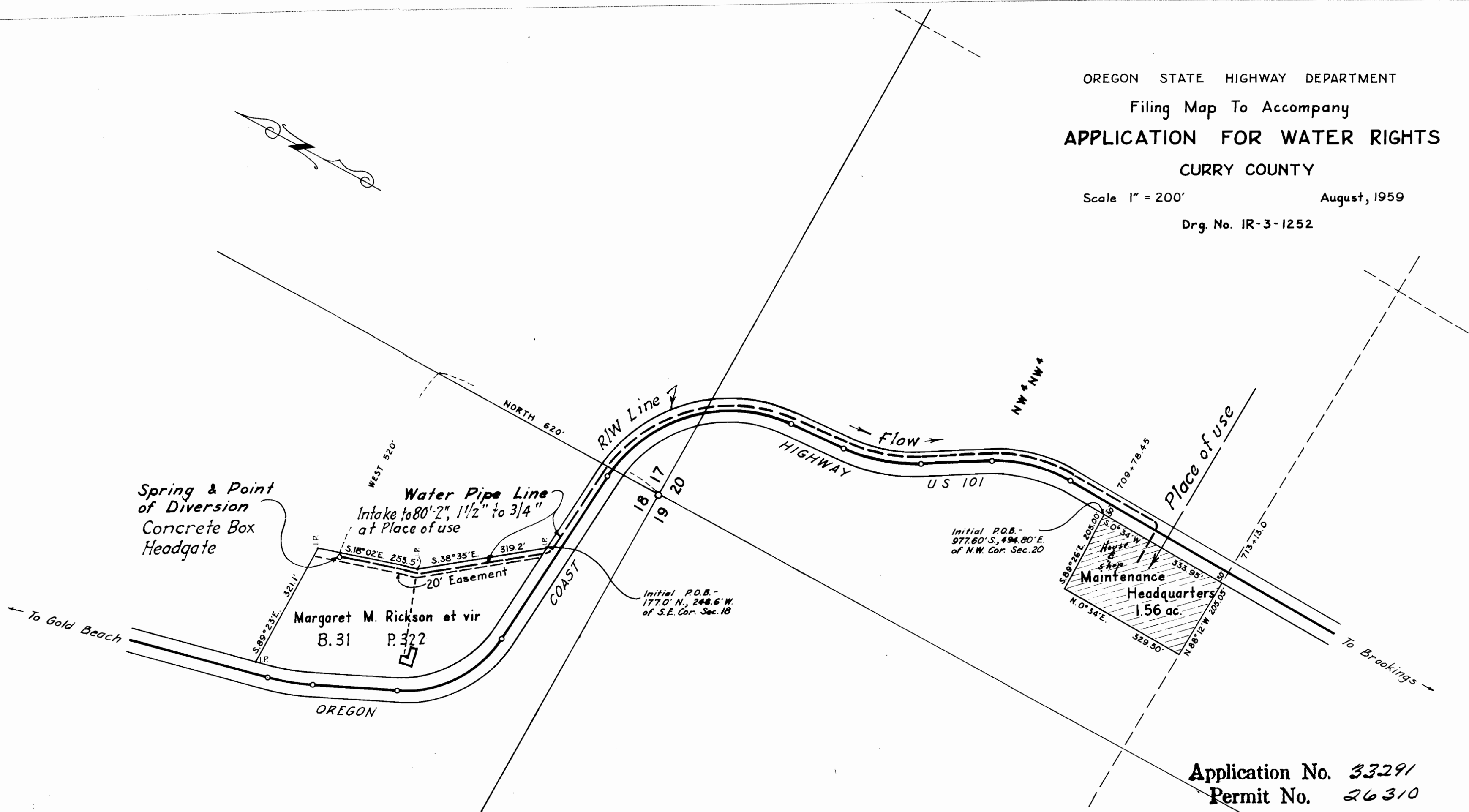
OREGON STATE HIGHWAY DEPARTMENT
 Filing Map To Accompany
APPLICATION FOR WATER RIGHTS

CURRY COUNTY

Scale 1" = 200'

August, 1959

Drq. No. IR-3-1252



Application No. 33291
 Permit No. 26310

T. 38 S., R. 14 W., W. M.
 CURRY COUNTY