

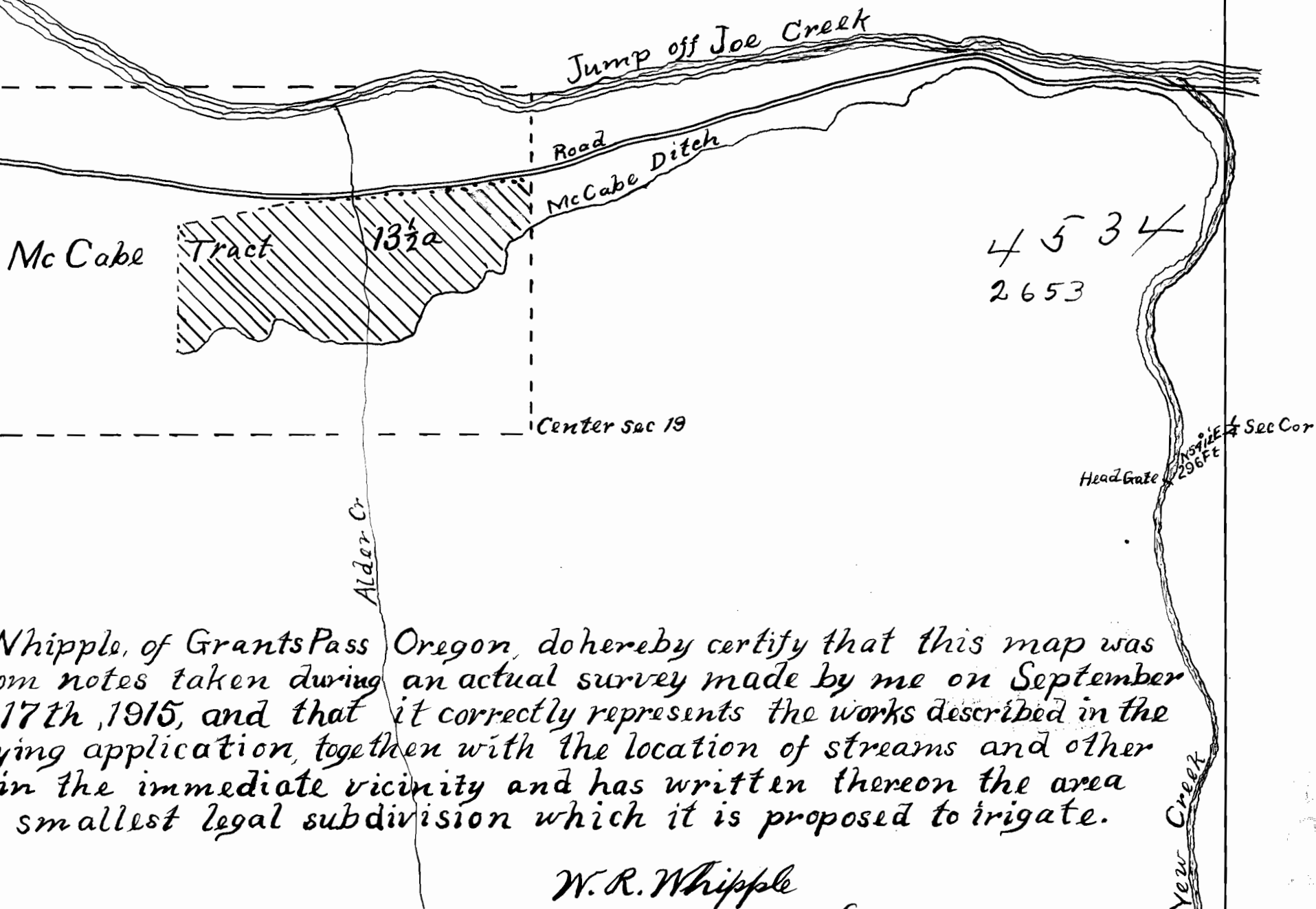
Map accompanying application to appropriate water from Yew Creek, through McCabe Ditch to irrigate a tract of about 13½ acres shown by shading in the S.E. ¼ N.W. ¼ Section 19 T 35S, R 6W, W.M.

OFFICE OF STATE ENGINEER

RECEIVED

SEP 24 1914

SALEM, OREGON.



I, W.R. Whipple, of Grants Pass Oregon, do hereby certify that this map was made from notes taken during an actual survey made by me on September 15th to 17th, 1915, and that it correctly represents the works described in the accompanying application, together with the location of streams and other ditches in the immediate vicinity and has written thereon the area in each smallest legal subdivision which it is proposed to irrigate.

W. R. Whipple

Surveyor