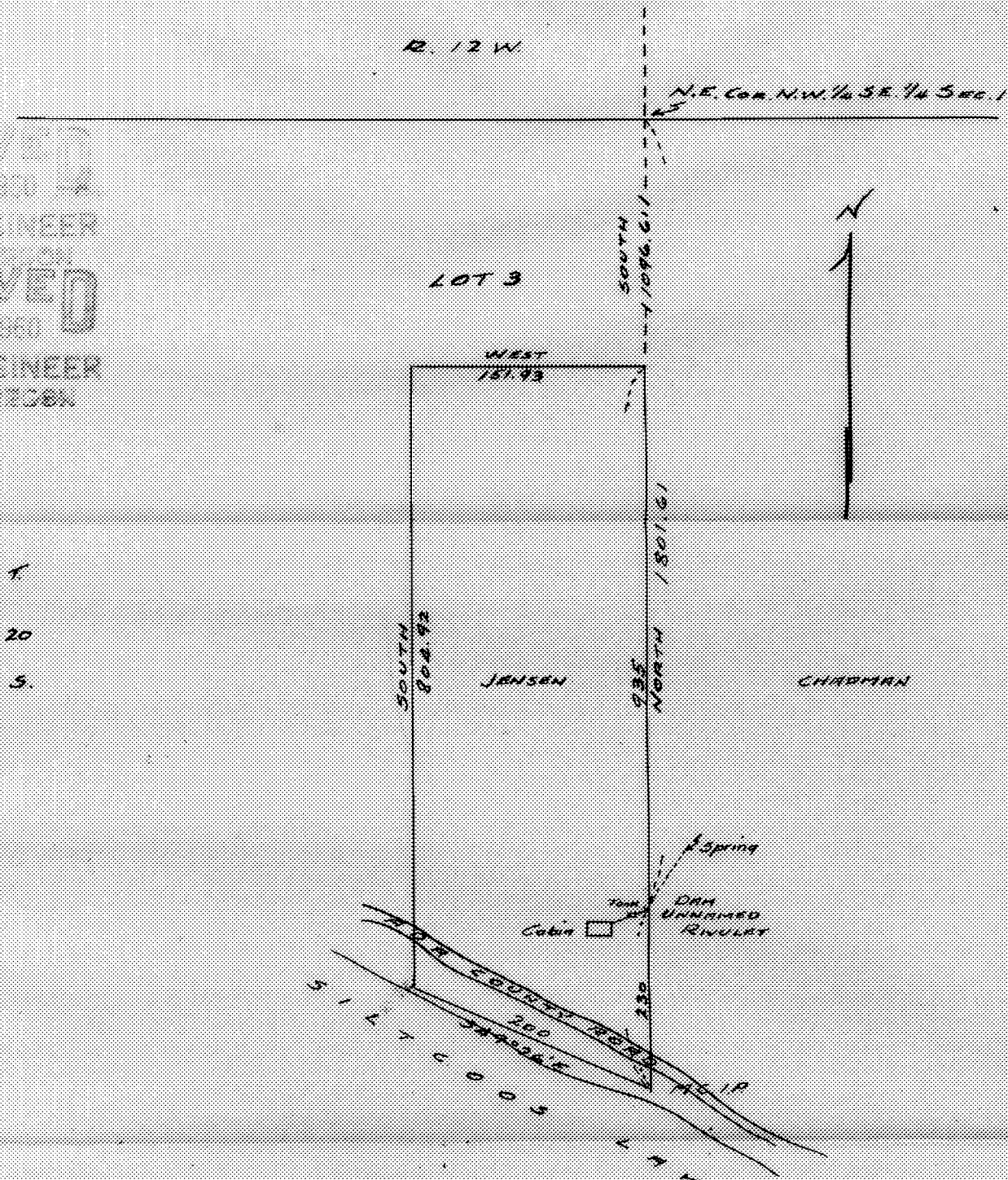


RECEIVED
 STATE ENGINEER
 JAN 20 1960
 STATE ENGINEER
 SALEM OREGON

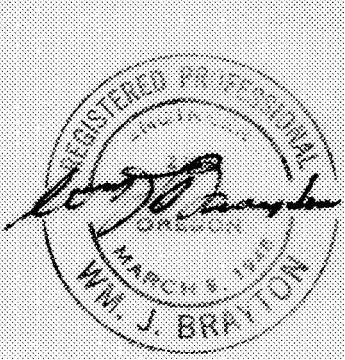
R. 12 W

N.E. Cor. NW 1/4 SE 1/4 SEC. 1



1
 20
 5.

SURVEY
 LUHR JENSEN
 LOT 3, SEC. 1 - T. 20 S. R. 12 W. W. M.
 DOUGLAS COUNTY
 Scale 1" = 200' Jan. '60.



Application No. 33560
 Permit No. 26553