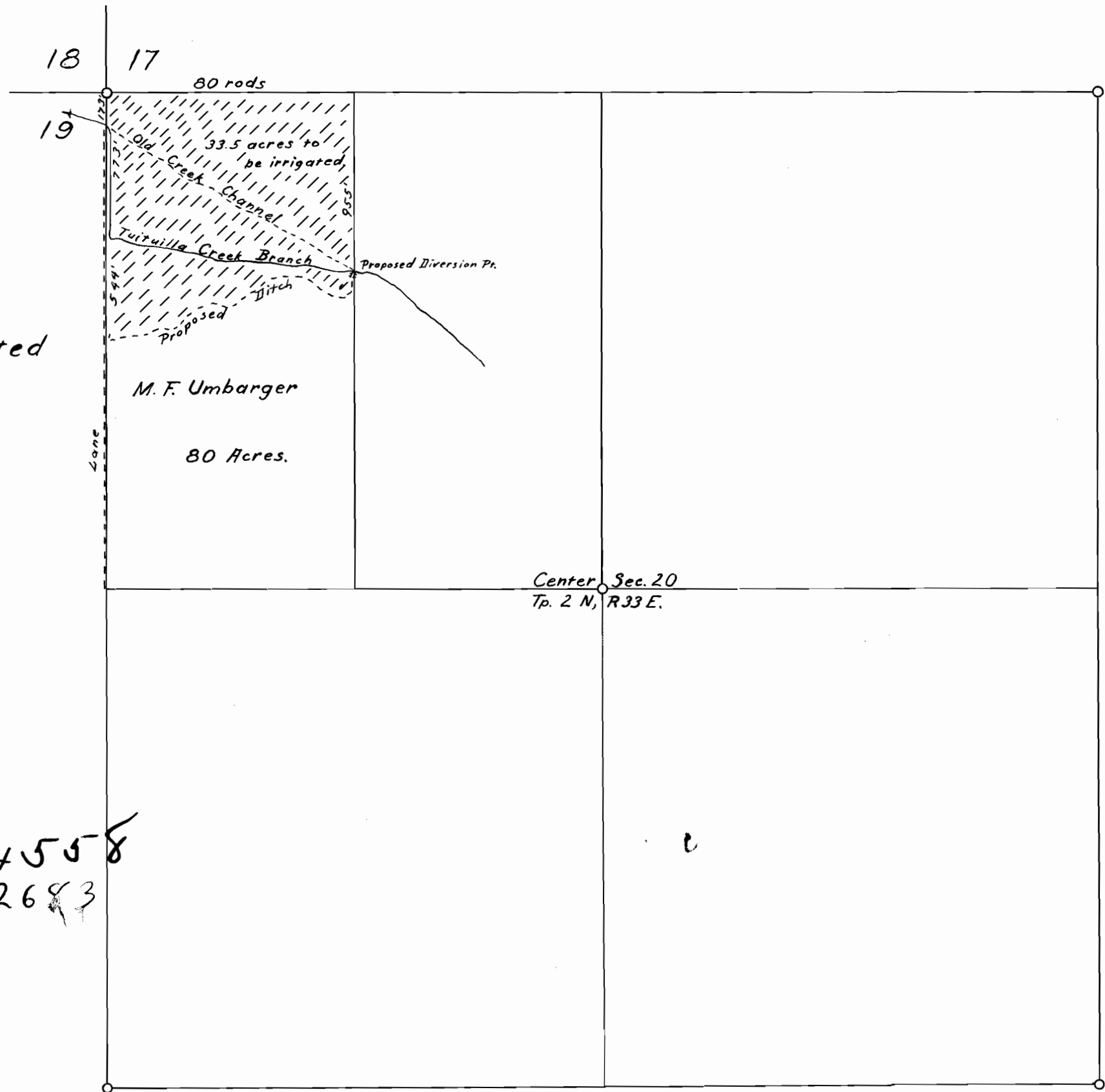


MAP
 Showing
 Land Proposed to be Irrigated
 in
 Sec. 20, Tp. 2. N, R 33 E. W.M.
 Scale 1" = 660' Sept. 17, 1915.



OFFICE OF STATE ENGINEER
 RECEIVED
 SEP 18 1915
 SALT LAKE CITY

4558
 2683