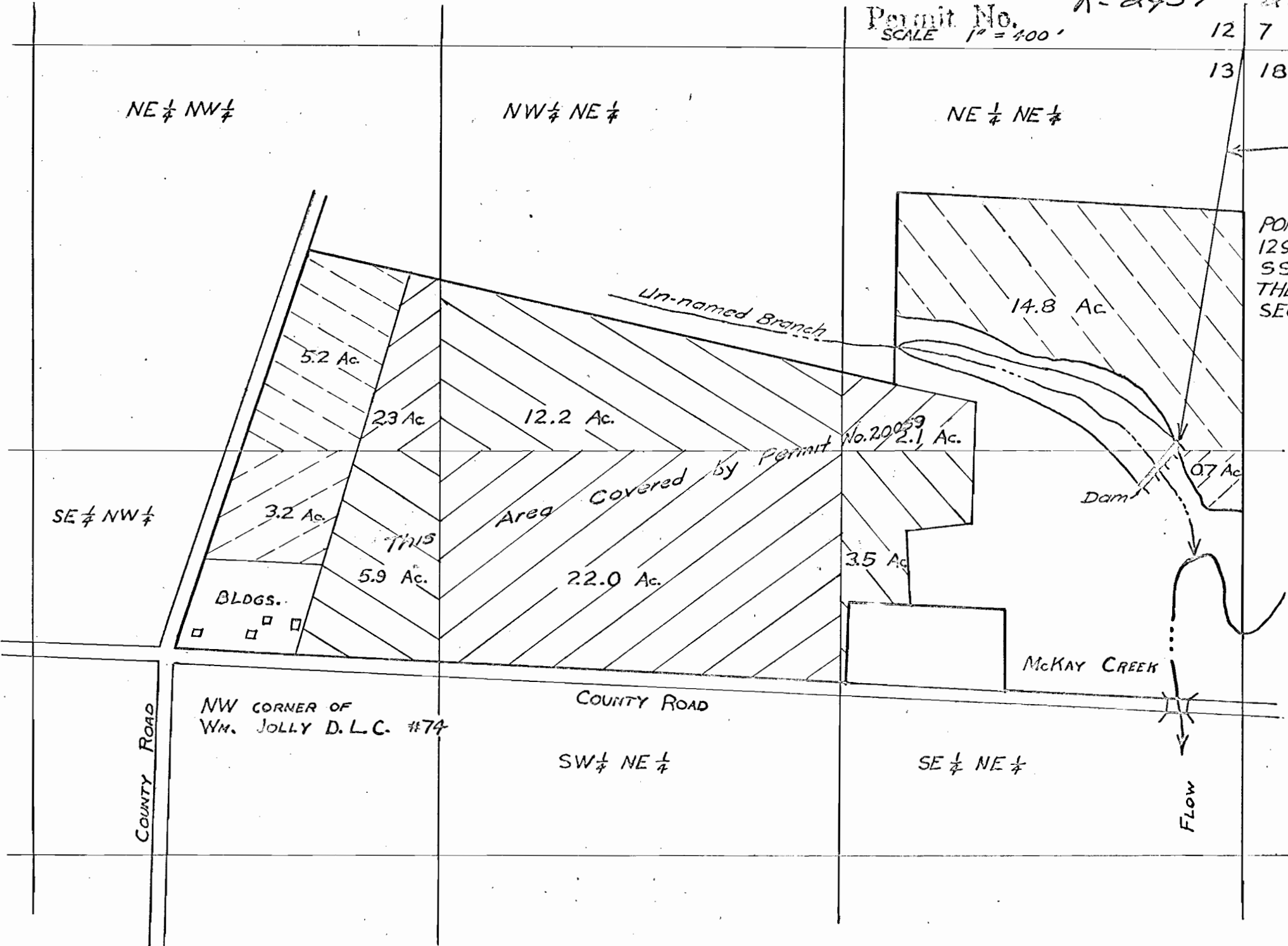


Application No. R-34112 + 34113
 Permit No. R-2457 + 26887
 SCALE 1" = 400'

12 7
 13 18



POINT OF DIVERSION
 1290 FT. BEARING
 S9°00'W FROM
 THE NE CORNER
 SEC 13

NW CORNER OF
 Wm. JOLLY D.L.C. #74

EDWIN SIMANTEL
 RTE 3
 HILLSBORO, OREGON