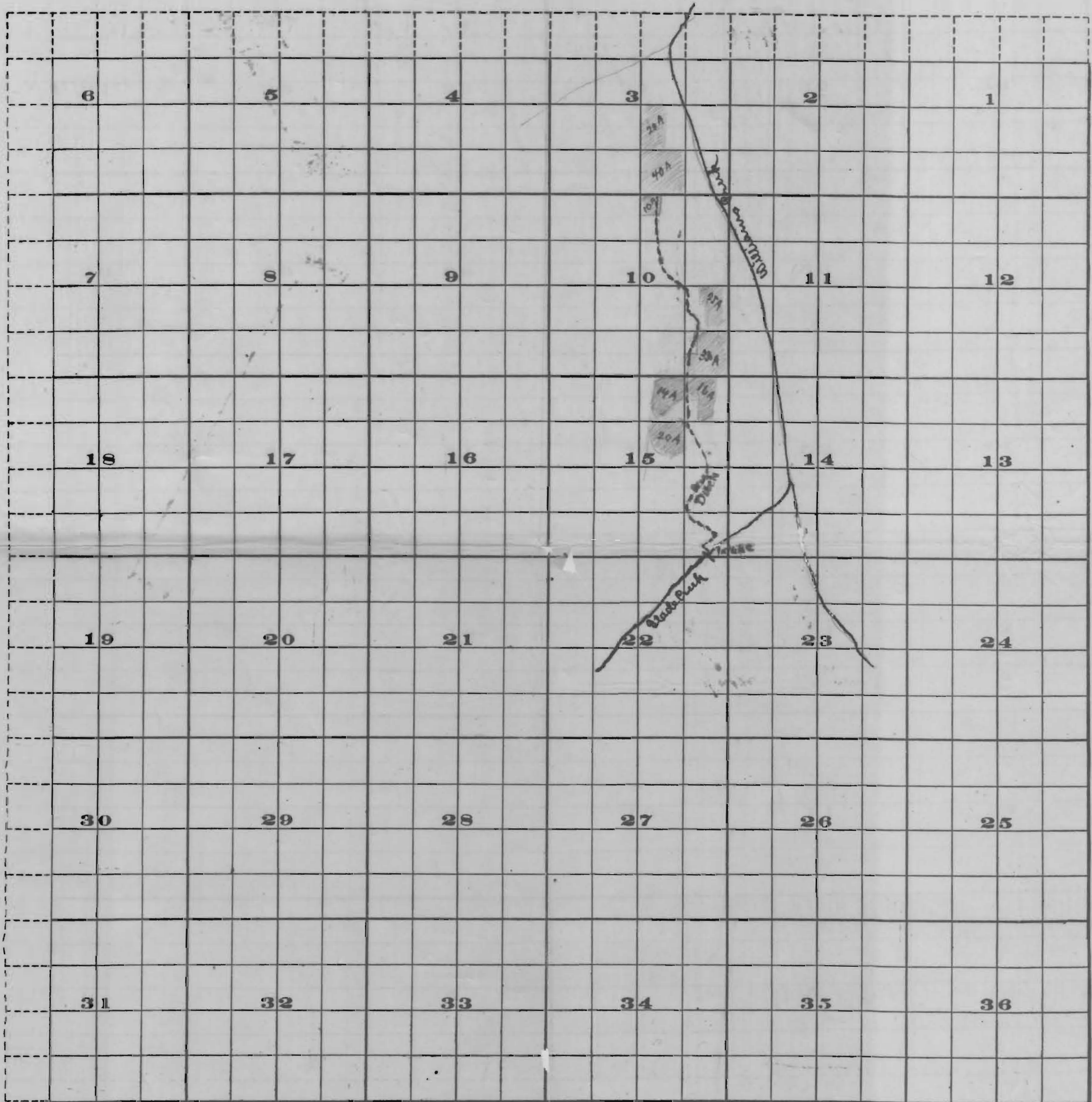


Township 39 S.,

Range 5 W. W.M.



Scale of Feet.

FROM OFFICE OF THE STATE ENGINEER, SALEM, OREGON

Application No. 40538
 Permit No. 2693

OFFICE OF STATE ENGINEER
RECEIVED
 SEP 27 1915
 SALEM, OREGON,

4238