

Map

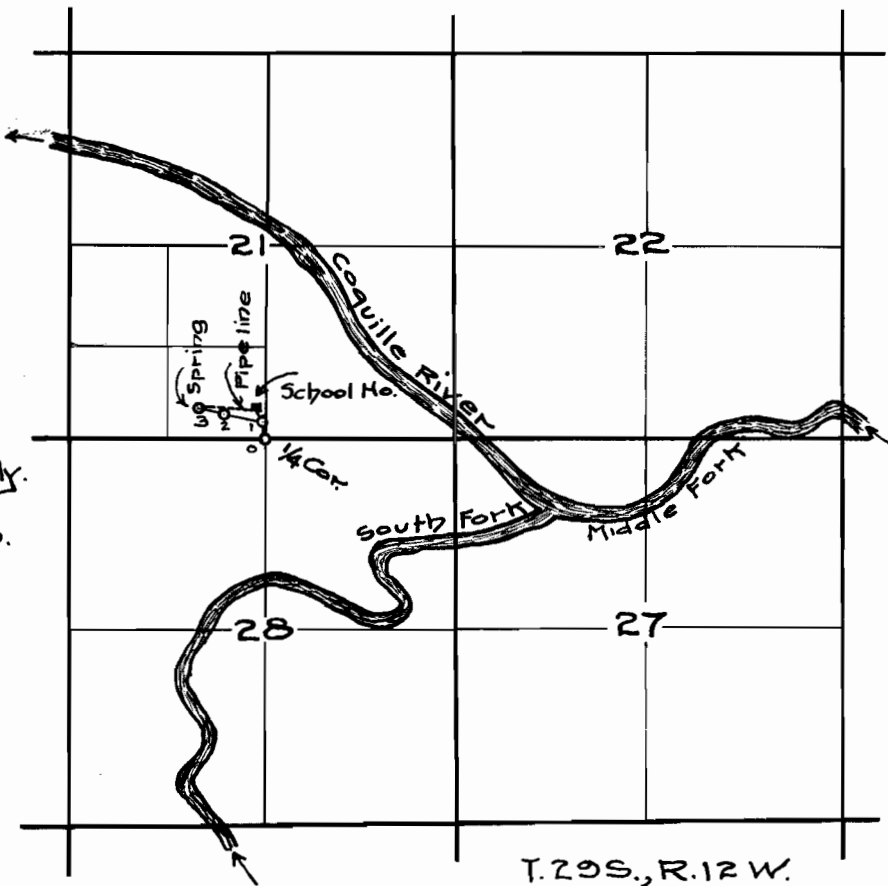
Accompanying Application for a Permit
to Appropriate Water

Twin Oaks School District No. 5 of Coos County.

Nov. 2nd. '15

Scale, 2 in = 1 mile.

Sta. 0 = 5/4 Cor. of Section 21.
Sta. 0 to 1 - N. 1° 20' W - 250'
1 " 2 - N. 78° 14' W - 530'
2 " 3 - N. 76° 50' W - 340'
Sta. 3 = Spring, Source of Supply.
Pipeline Spring to School Ho.
S. 82° 30' E. 825'
Courses True.



OFFICE OF STATE ENGINEER
RECEIVED
NOV 18 1915
SALEM, OREGON.

Application No. 4637
Permit No. 2718

I, Geo. E. Tonney of Myrtle Point, Oregon do hereby certify that this map was made from notes taken during an actual survey by me on Nov. 2, 1915 and that it correctly represents the the works described in the accompanying application, together with the location of streams in the immediate vicinity.

Geo. E. Tonney.
Surveyor.

4637