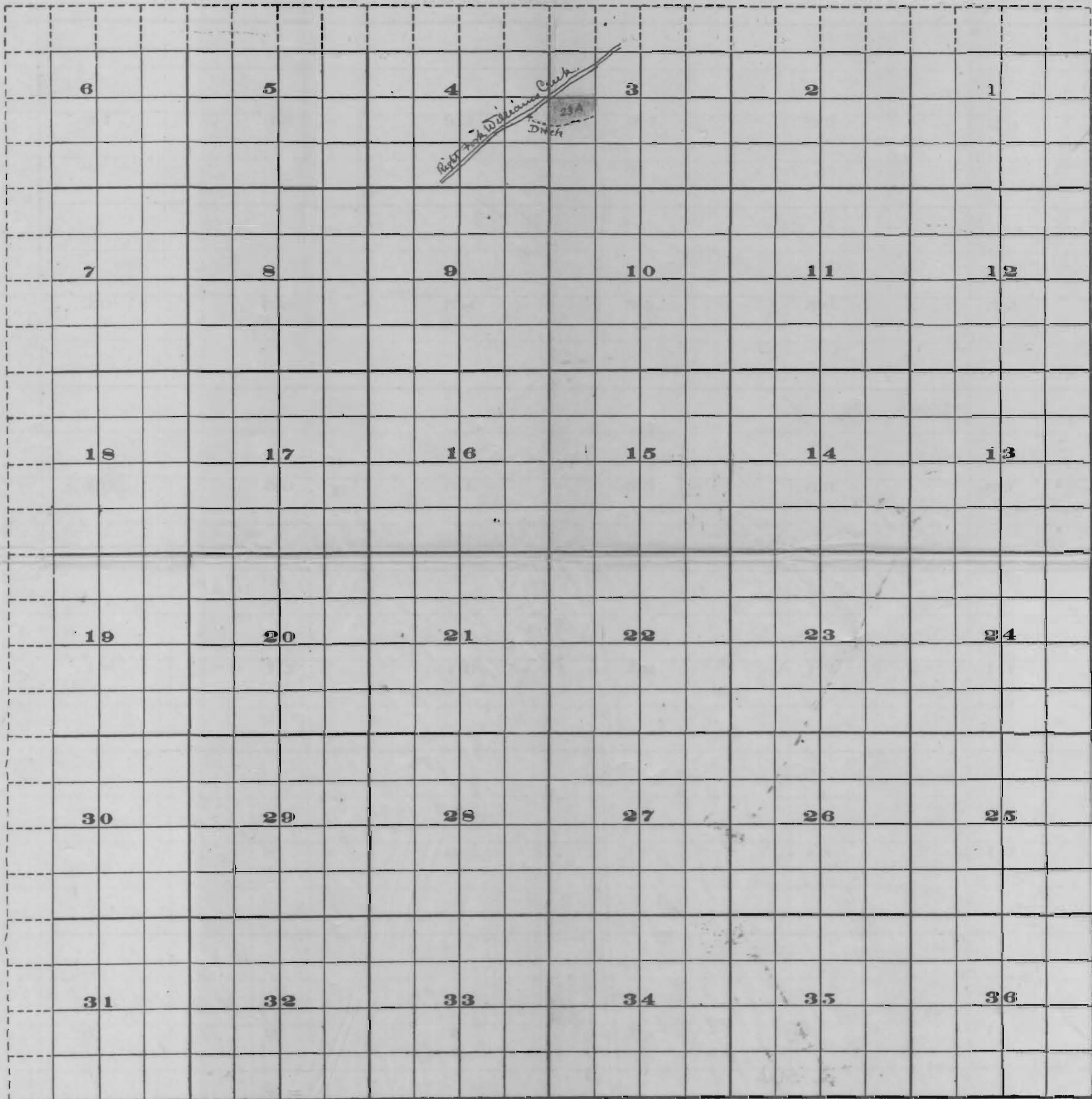


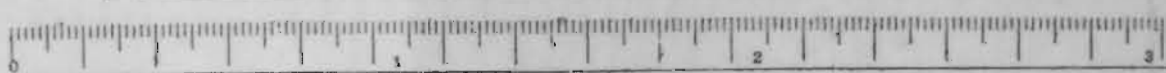
Township 39 S.

Range 5 W. W. M.



4632

4632



Scale of Feet.

FROM OFFICE OF THE STATE ENGINEER, SALEM, OREGON

Application No. 4635
Permit No. 2726

OFFICE OF STATE ENGINEER
RECEIVED
NOV 13 1915
SALEM, OREGON,

RECEIVED
NOV 13 1915
OFFICE OF STATE ENGINEER

32