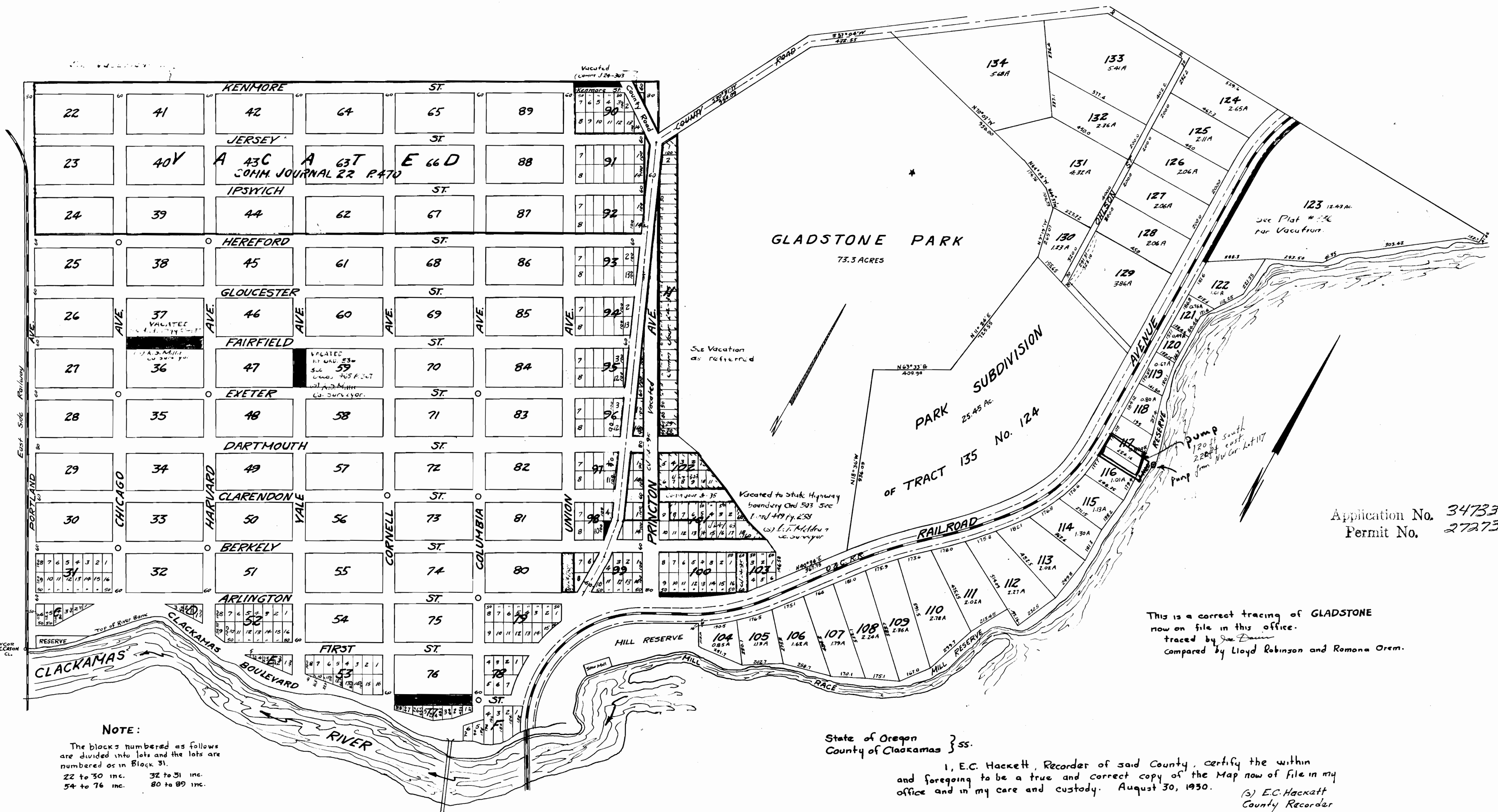


GLADSTONE

BLOCKS 22 TO 103 INCLUSIVE AND FRACTIONAL BLOCKS C TO H
SCALE 1" = 300' SURVEYED BY SIDNEY SMITH



Application No. 34733
Permit No. 27273

This is a correct tracing of GLADSTONE
now on file in this office.
traced by Joe Davis
compared by Lloyd Robinson and Romona Orem.

NOTE:

The blocks numbered as follows
are divided into lots and the lots are
numbered as in Block 31.
22 to 30 inc. 32 to 31 inc.
54 to 76 inc. 80 to 89 inc.

State of Oregon } ss.
County of Clackamas }

I, E.C. Hackett, Recorder of said County, certify the within
and foregoing to be a true and correct copy of the Map now of file in my
office and in my care and custody. August 30, 1930.
(s) E.C. Hackett
County Recorder