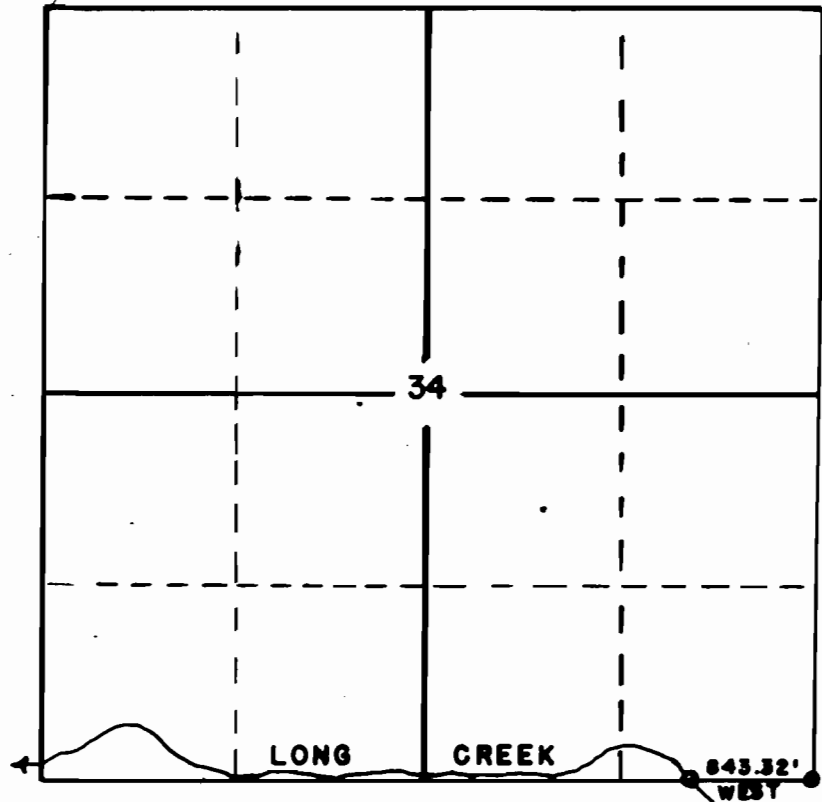
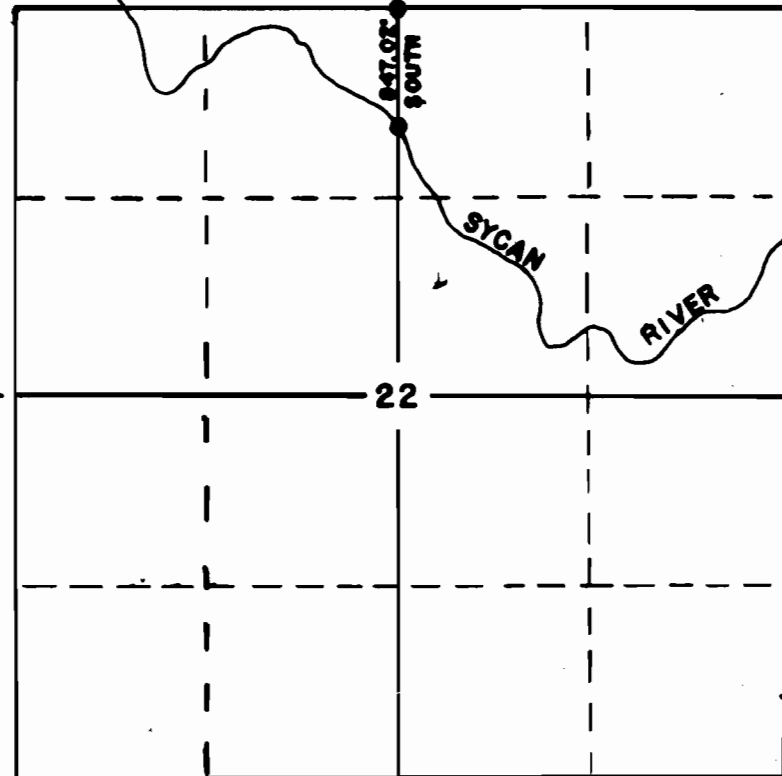


T. 32 S. R. 15 E.

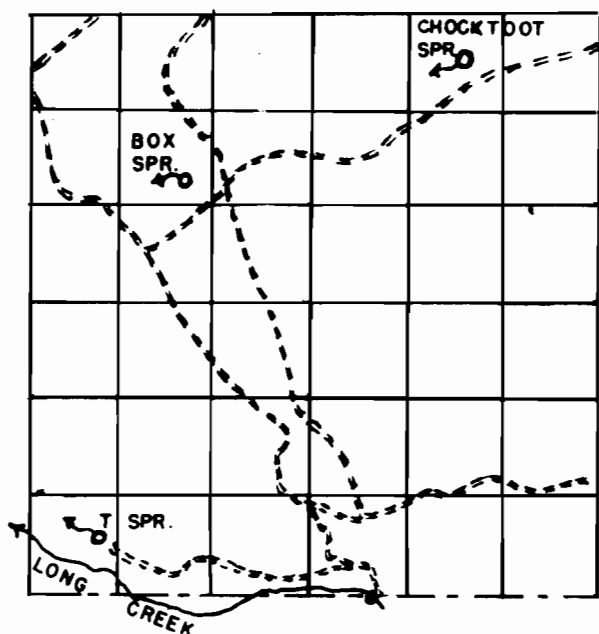


T. 33 S. R. 15 E.



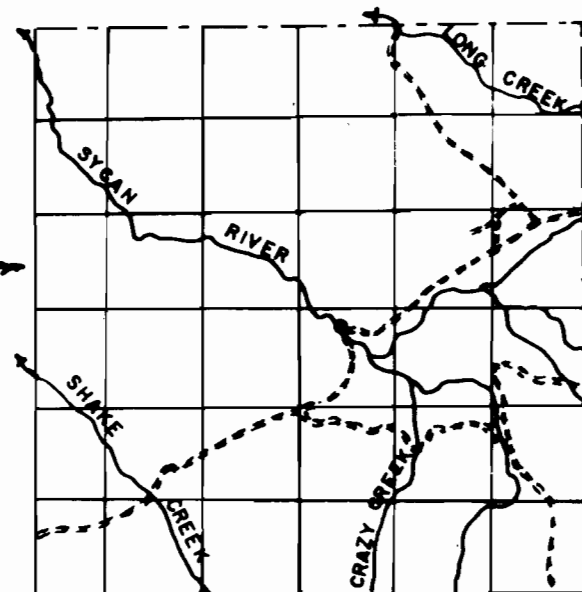
SCALE: 4" = 1 MILE

N

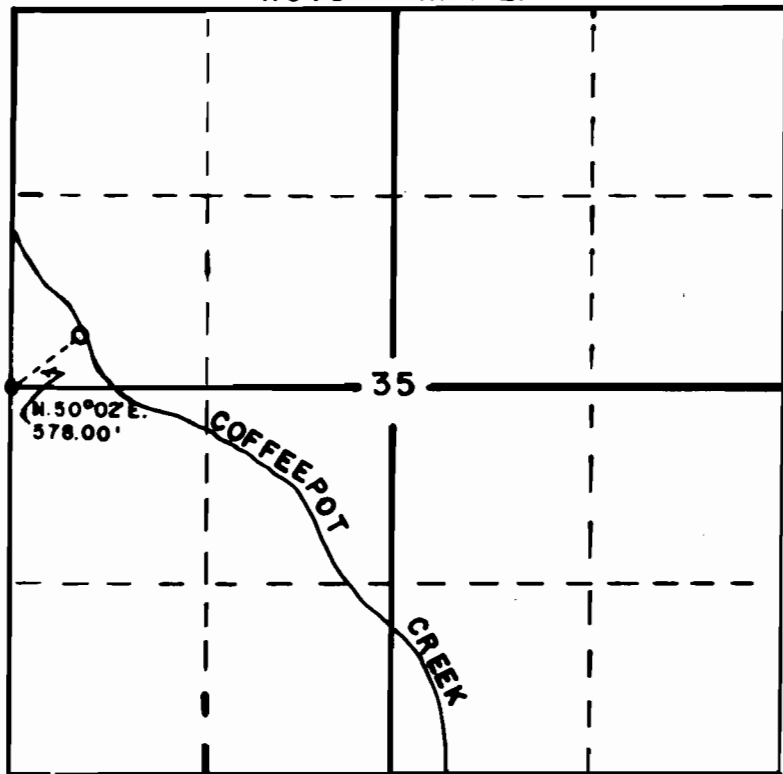


SCALE: 1" = 2 MILES

VICINITY MAPS



T. 34 S. R. 17 E.



I, G. M. UPINGTON OF WEYERHAEUSER COMPANY DO

HEREBY CERTIFY THAT THIS MAP WAS MADE FROM NOTES TAKEN

DURING AN ACTUAL SURVEY MADE UNDER MY IMMEDIATE

SUPERVISION ON OCT. 11-12, 1960; THAT THE MONUMENTS

SHOWN ON THIS MAP CONSISTING OF 1" X 3/8" IRON PIPES

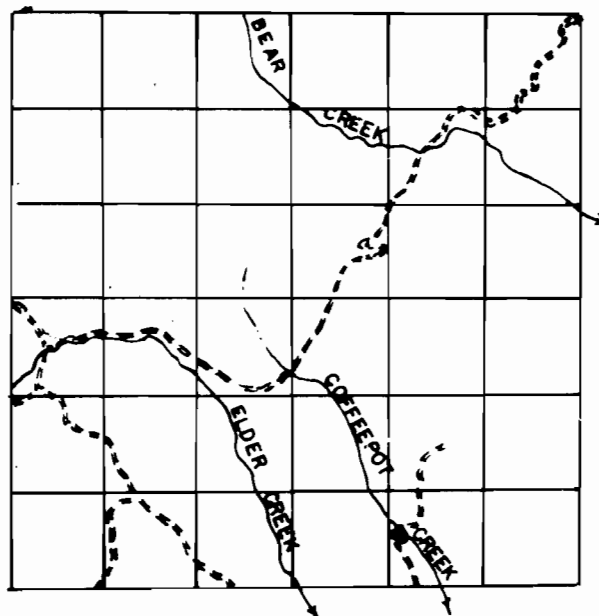
ARE 843.32 FT. WEST OF SE SECTION CORNER SECTION 34,

T. 32 S., R. 15 E., W.M.; 847.02' SOUTH OF N. 1/4 CORNER

SECTION 22, T. 33 S., R. 15 E., W.M.; 578.00 FT. N. 50° 02' E.

OF W. 1/4 CORNER SECTION 35, T. 34 S., R. 17 E., W.M.

No 34784 & 34785
27302 & 27303



WATER RIGHTS APPLICATION	
SECTIONS 22, 34, & 35	
TWNs. 32, 33, & 34 S., RNGs. 15 & 17 E., W.M.	
WEYERHAEUSER COMPANY	
LUMBER & PLYWOOD DIVISION	
KLAMATH FALLS BRANCH	
SCALE - AS SHOWN	DATE - MAR. 2, 1961
DEL. - C.L.C.	CHECKED BY - CHH
TRACED - C.L.C.	DRAWING No. - K203-4

C-41-17