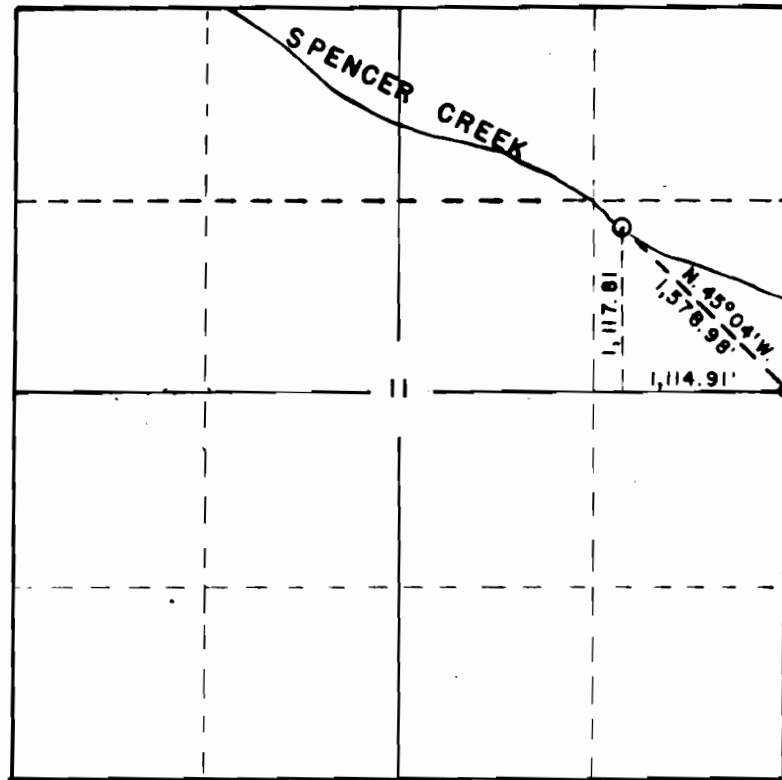
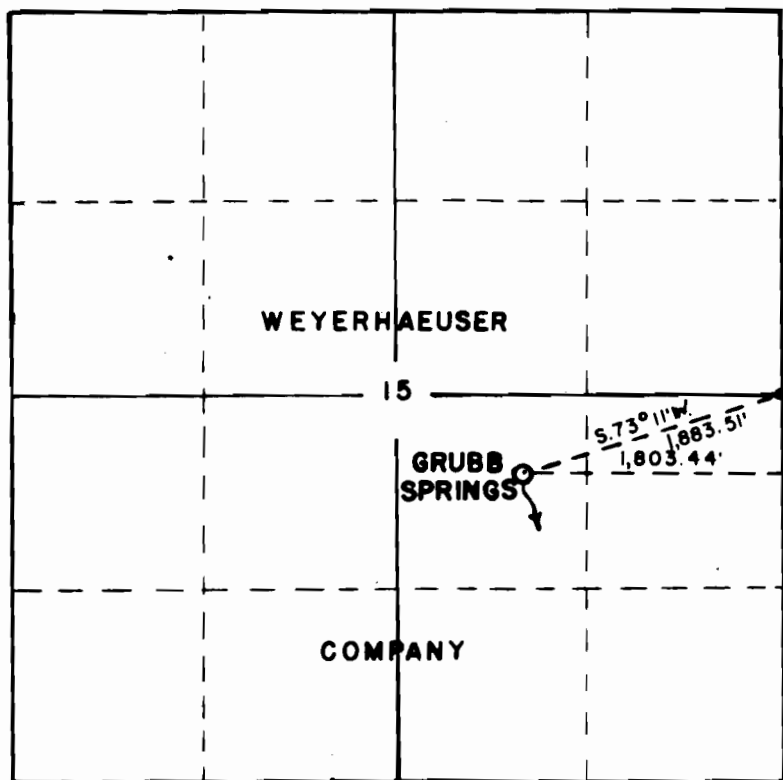


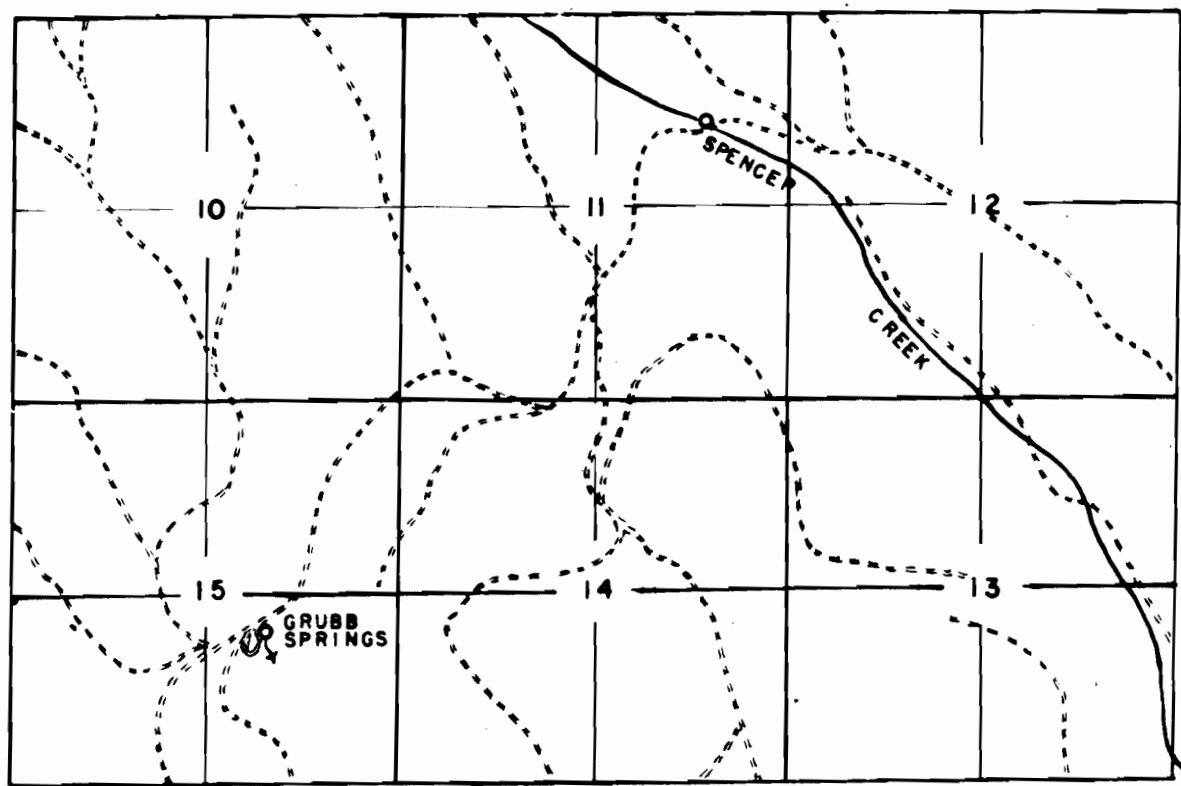
T. 39 S. R. 6 E. W.M.



SCALE - 4" = 1 MILE

34787  
27305

I, G. M. Uppington of Weyerhaeuser Company do hereby certify that this map was made from notes taken during an actual survey made under my immediate supervision on Oct. 2, 1960; that the monuments shown on this map consisting of 1" X 36" iron pipes are 1,578.98 ft. N. 45° 04' W. of E. 1/4 corner Section 11, T. 39 S., R. 6 E., W. M.; 1,883.51 ft. S. 73° 11' E. of E. 1/4 corner Section 15, T. 39 S., R. 6 E., W. M..



VICINITY MAP  
SCALE - 2" = 1 MILE

*G. M. Uppington*

WATER RIGHTS APPLICATION SEC. 11 & 15, T. 39 S., R. 6 E., W. M.	
WEYERHAEUSER COMPANY LUMBER & PLYWOOD DIVISION KLAMATH FALLS BRANCH	
SCALE: AS SHOWN	DATE: FEB. 22, 1961
DEL: C. L. C.	CHECKED BY: J. A. B.
TRACED: C. L. C.	DRAWING NO.: K 113

0-41-17