

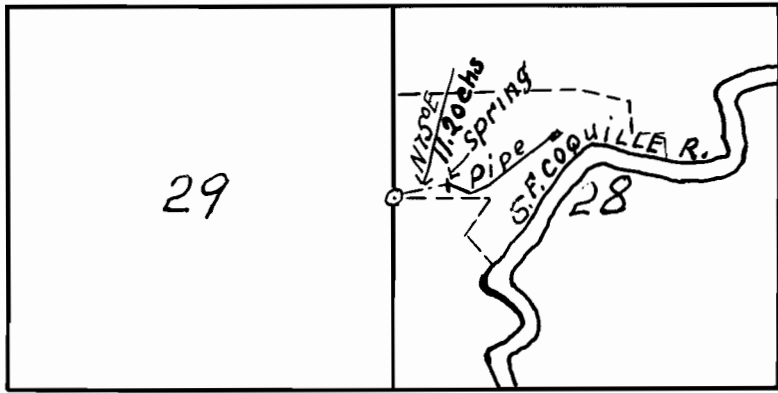
RECEIVED

DEC 3 1915

CALIFORNIA ENGINEER

4666
2745

T.29S. R.12 W. W.M.



MAP

Accompanying application of W. A. McNair for permit to appropriate water.

Scale 2" = 1 mi.

I, J. N. Gearhart, of Dora, Oregon, do hereby certify that this map was made from notes taken during an actual survey made by me on Nov. 18, 1915, and that it correctly represents the works described in the accompanying application, together with the location of streams in the immediate vicinity.

J. N. Gearhart
Surveyor.