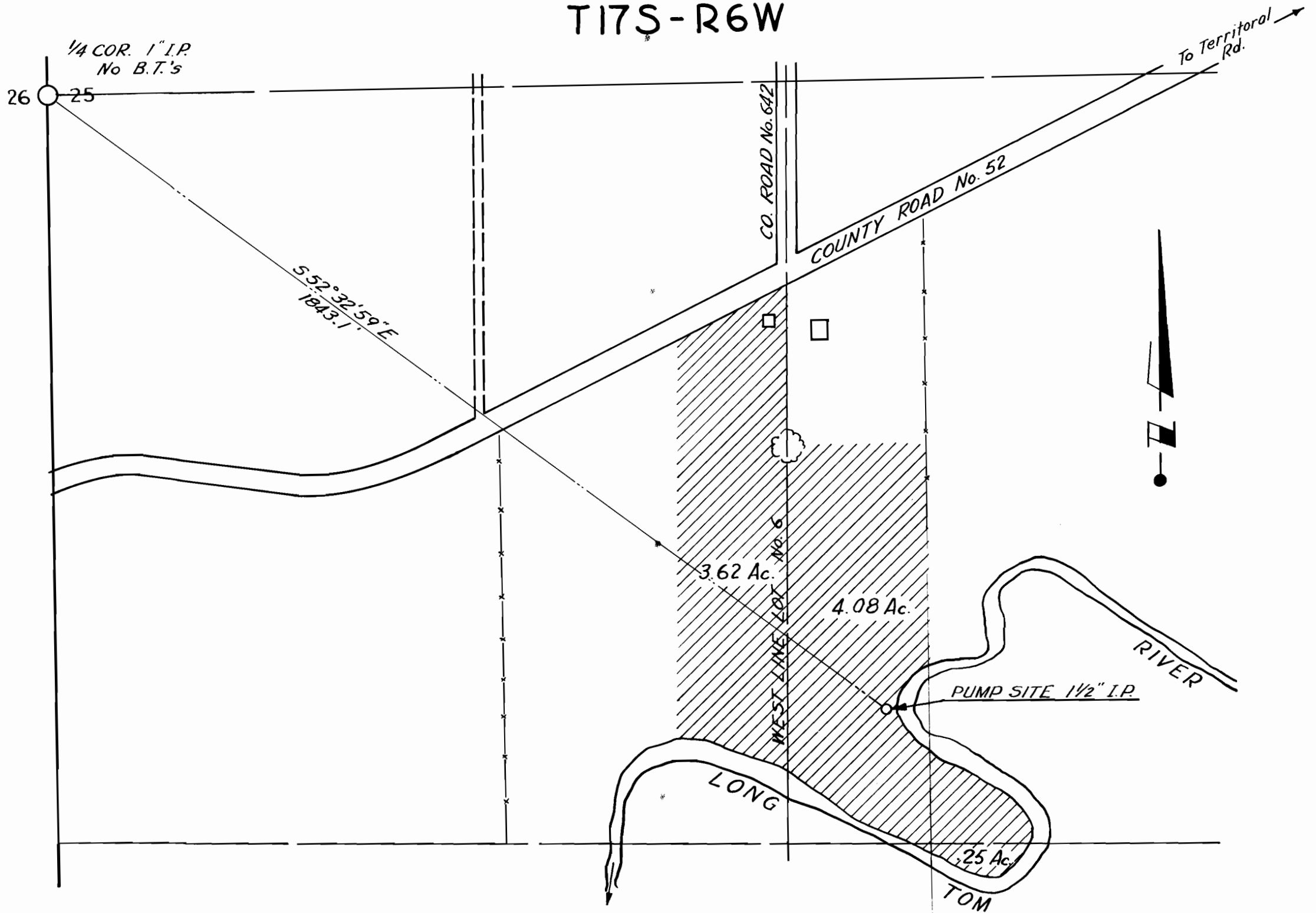


T17S-R6W



LLOYD S. SMITH PROPERTY
Veneta, Oregon

SCALE : 1" = 200'

PREPARED BY THE OFFICE OF H.G. CHICKERING JR.,
CONSULTING PHOTOGRAMMETRIST INC.
EUGENE, OREGON

I HEREBY CERTIFY THAT THIS MAP WAS MADE FROM
NOTES TAKEN DURING AN ACTUAL SURVEY BY THE
OFFICE OF H.G. CHICKERING JR. JULY, 1961.

35119

27490