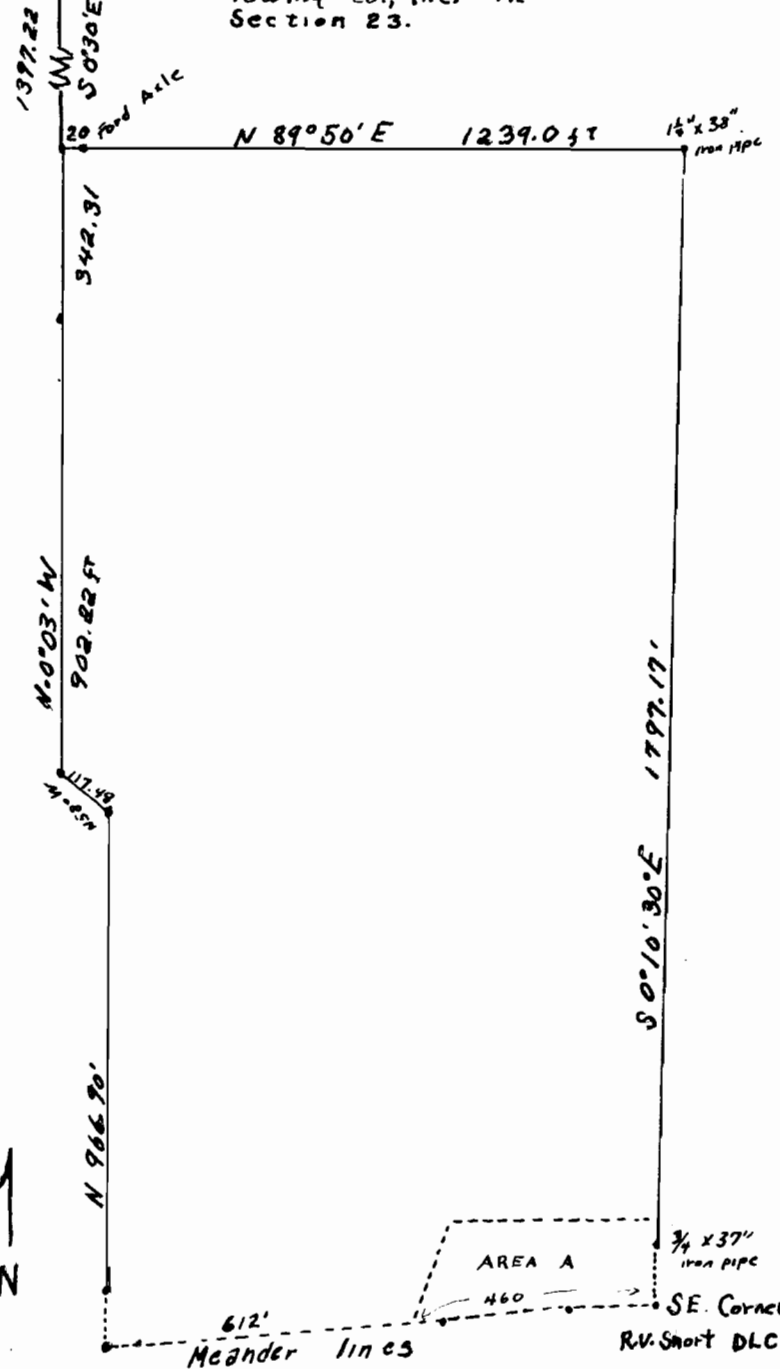


SECTIONS

15 | 14
22 | 23

Location of Area A
Leased By Joe Bernert
Towing Co., Inc. in
Section 23.

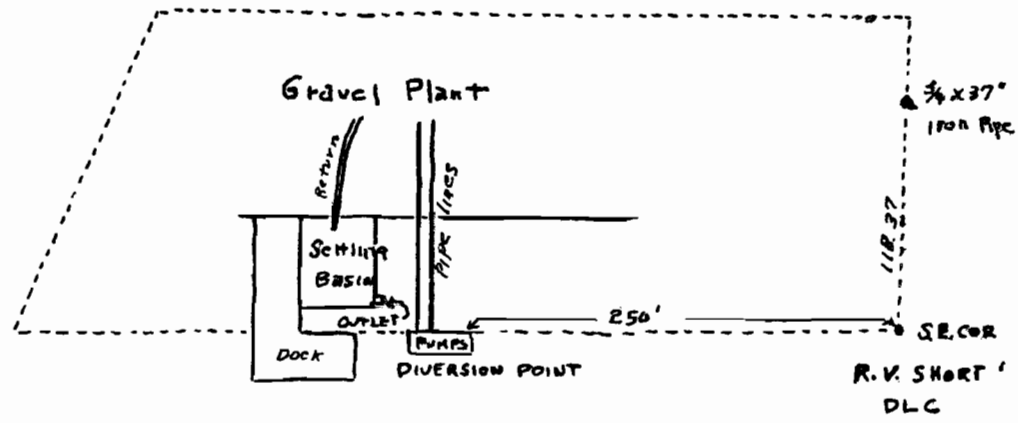


Scale 1" = 400'

LOCATION MAP

SEC. 23 T3S RIW of WM Robert V. Short DLC
CLACKAMAS COUNTY - Property Leased from
H.S & D.S. Young by Joe Bernert Towing Co. Inc.

AREA A



Willamette River - Flow →

Scale 1" = 100'

Section No. 37367
Filed No. 27930

By James Bernert