

MOUNT NEBO TRACT

FILED JAN. 2, 1908, RECORDED JANUARY 13, 1908
(SGD) Z. N. AGEE, COUNTY CLERK

STATE OF OREGON }
COUNTY OF DOUGLAS } ss
I, FRED M. DARBY, COUNTY SURVEYOR OF DOUGLAS COUNTY OREGON, DO HEREBY CERTIFY THAT THIS COPY OF "MOUNT NEBO TRACT" IS A TRUE AND CORRECT COPY OF THE ORIGINAL PLAT AS FILED IN THE OFFICE OF THE COUNTY CLERK AND IS MADE IN COMPLIANCE WITH CHAPTER 92 OREGON LAWS 1953 SEC 92-130.

Fred M. Darby
COUNTY SURVEYOR

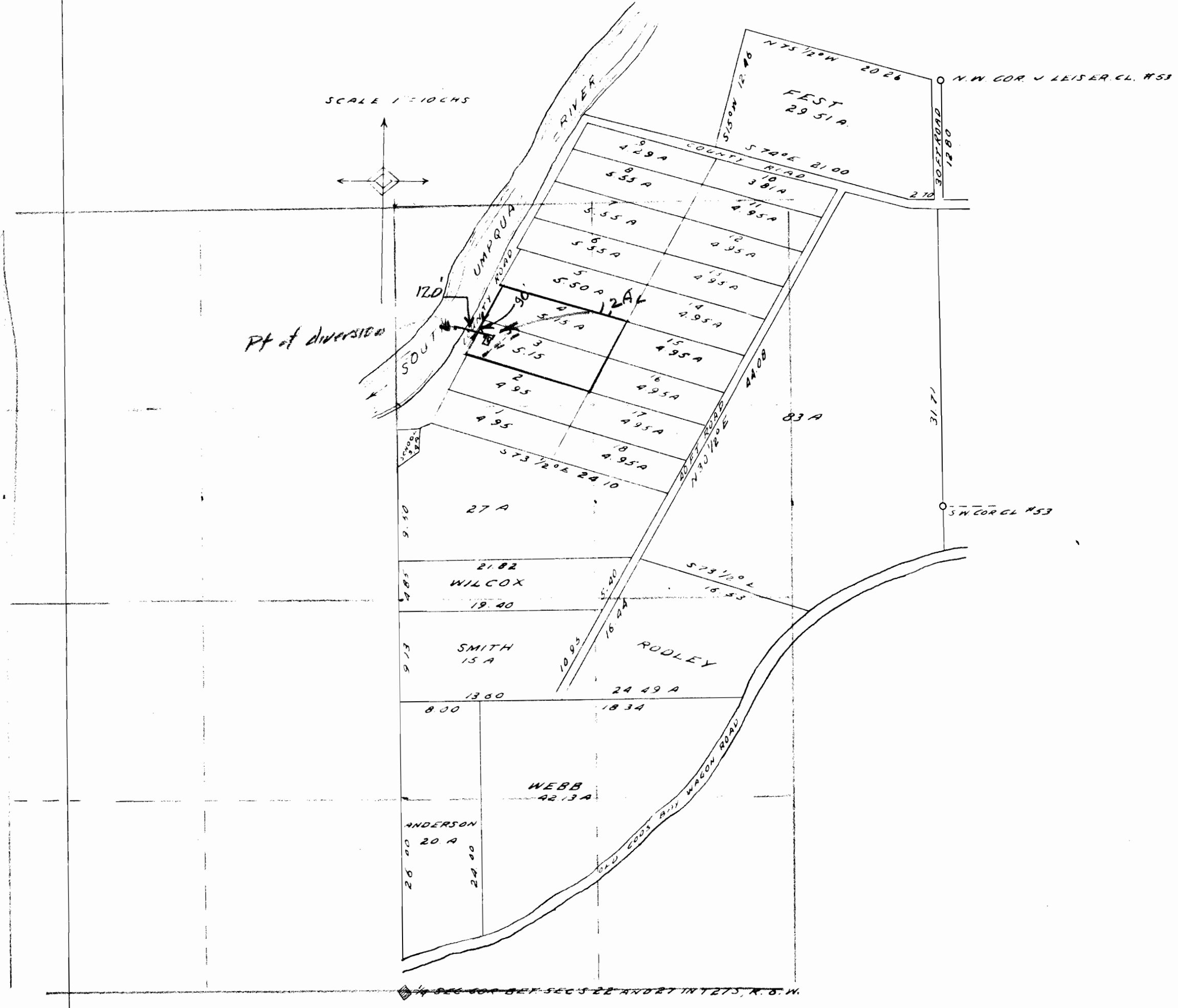
SUBSCRIBED AND SWORN TO BEFORE ME THIS 26th DAY OF March 1958

Chas Doerner
COUNTY CLERK

STATE OF OREGON }
COUNTY OF DOUGLAS } ss
I, CHAS. DOERNER, COUNTY CLERK OF DOUGLAS COUNTY OREGON, DO HEREBY CERTIFY THAT THE FOREGOING COPY OF PLAT HAS BEEN BY ME COMPARED WITH THE ORIGINAL THEREOF THAT IT IS A TRUE AND CORRECT COPY THEREFROM AND OF THE WHOLE THEREOF AS THE SAME APPEARS ON FILE IN MY OFFICE AND CUSTODY.

WITNESS MY HAND AND OFFICIAL SEAL THIS 26th DAY OF March 1958.

Chas Doerner
COUNTY CLERK



No. 38067
Page No. 28388