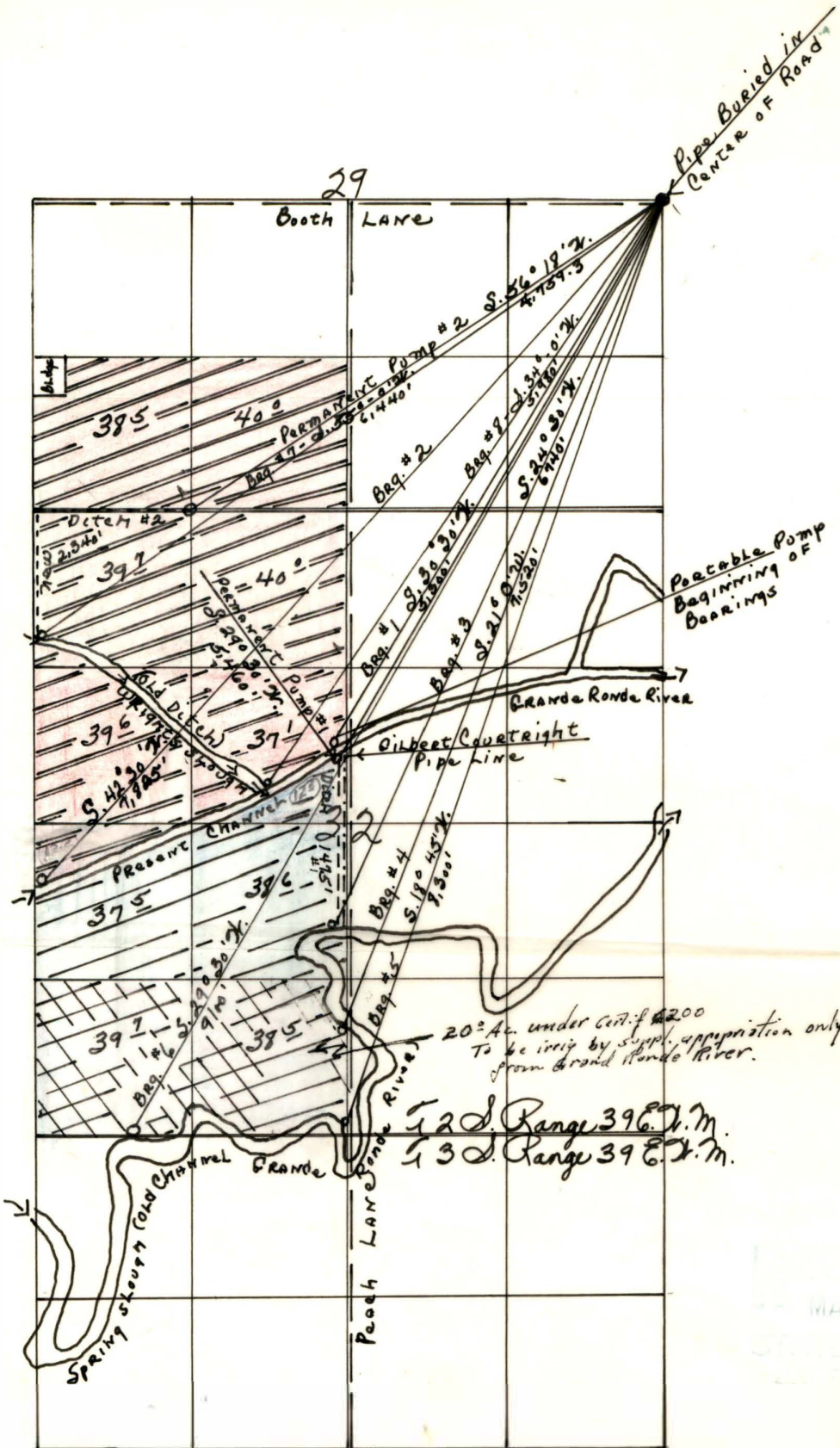


RECEIVED  
 MAR 20 1963  
 STATE ENGINEER  
 SALEM, OREGON



To be Irrig. From

- Wright Slough. None
- Wright slough with any deficiency made up from Grande Ronde River
- Grande Ronde River
- Spring Slough with any deficiency made up from Grande Ronde River

Portable Pump  
 Beginning of  
 Bearings

20± Ac. under Cert. #200  
 To be irrig. by suppl. appropiation only  
 from Grande Ronde River.

12 Range 39 E. T. M.  
 13 Range 39 E. T. M.

RECEIVED  
 MAR 5 1963  
 STATE ENGINEER  
 SALEM, OREGON

Fred Knappe  
 County of Union  
 State of Oregon  
 4" Scale

RECEIVED  
 OCT 30 1962  
 STATE ENGINEER  
 SALEM, OREGON

Application No. 38208  
 Permit No. 28560