

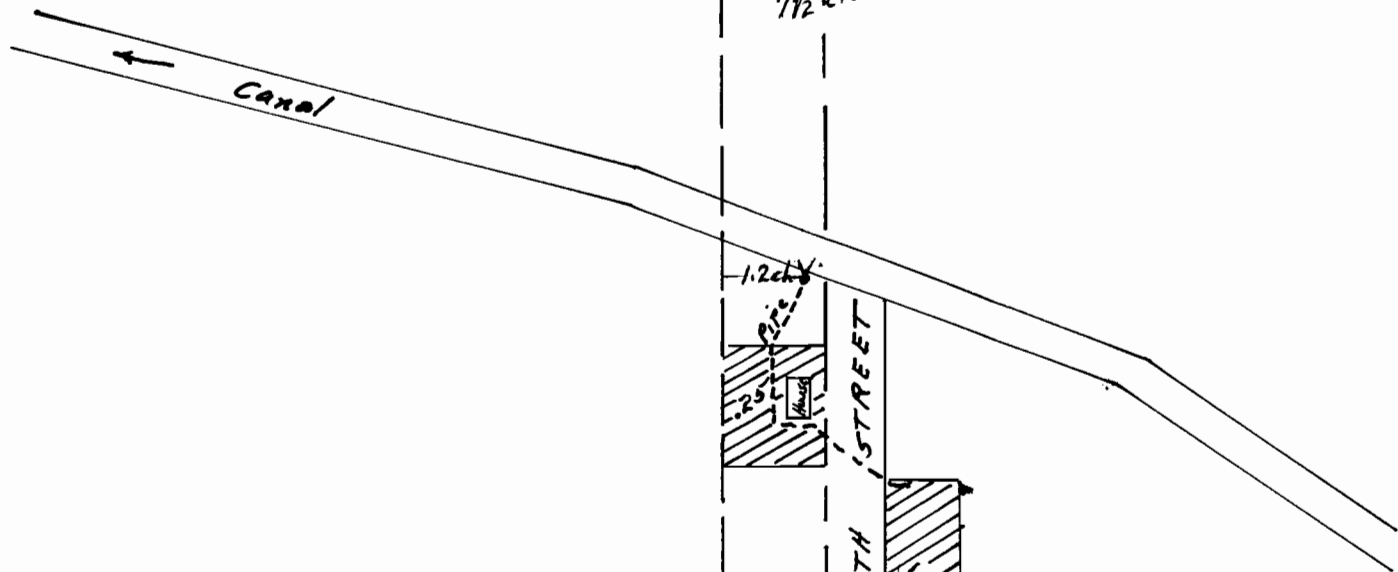
SEC 32, T. 13 S., R. 2 W., W. M.

SCALE: 1" = 3 CH

NE Cor. D.L.C. #1
Found Stone 4x3x17 CS on SE face

Application No. 39392
Permit No. 29360

7 1/2 ch



Section 31
Section 32

NW 1/4 SW 1/4

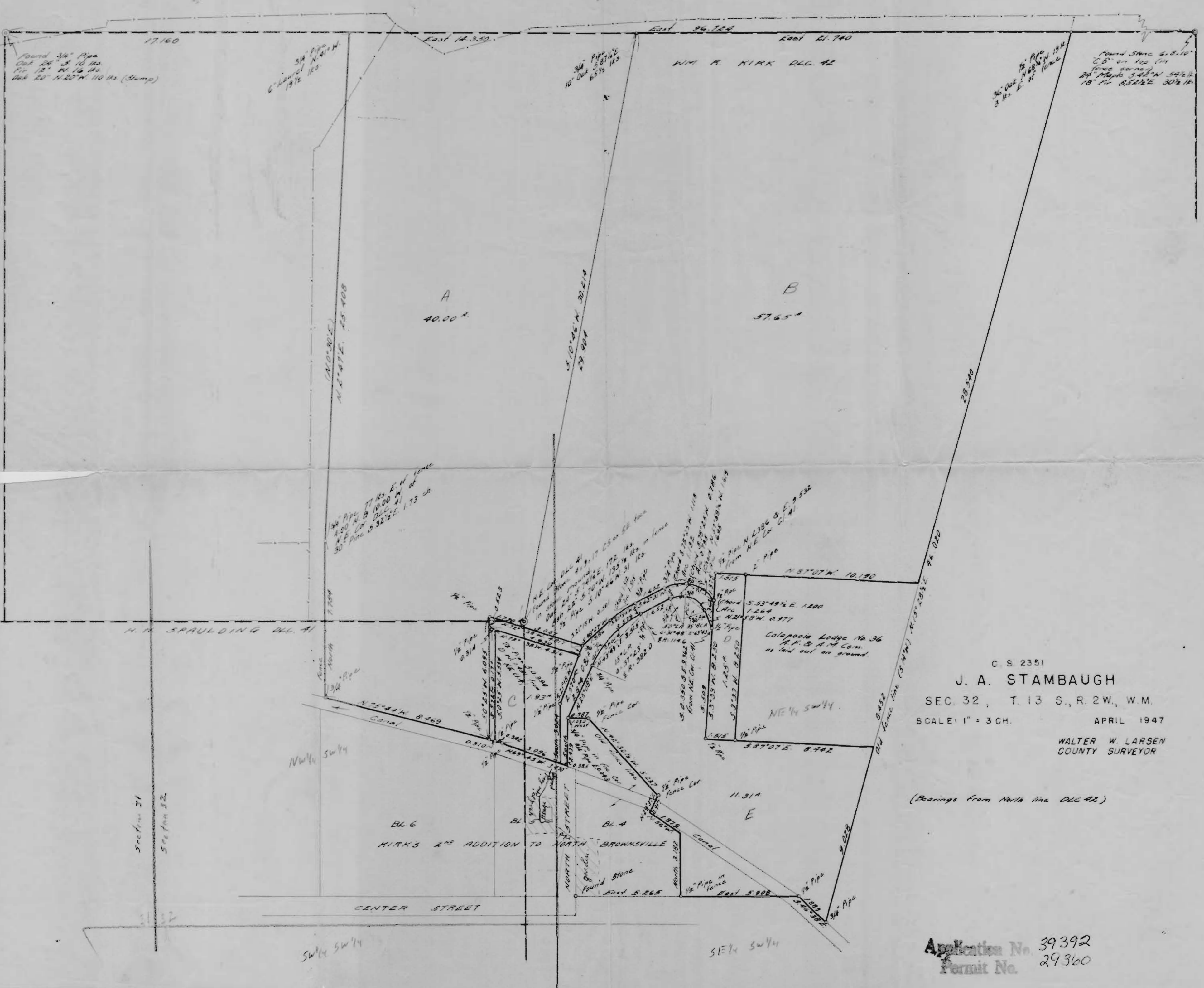
CENTER STREET

SW 1/4 SW 1/4

NORTH 15 STREET

NE 1/4 SW 1/4

SE 1/4 SW 1/4



Found 3/4" Pipe
 Oct 24 10 1/2
 Feb 12 16 1/2
 Aug 20 110 lbs (Stamp)

3/4" Pipe
 6" Level N. 41° W.
 19 1/2 lbs

3/4" Pipe
 10" Oct 6 5/8 1/2
 13

3/4" Pipe
 3 1/2 lbs
 19 1/2 lbs

Found Stone 4.8.10
 6.5" on 100 (11
 fence corner)
 24" Mark 3.42° N 54 1/2° E
 18" Pin 6.52° E 30 1/2° N

W.M. R. KIRK D.L.C. 42

A
 40.00[±]

B
 57.65[±]

H. H. SPAULDING D.L.C. 41

Colapooa Lodge No 36
 A.F. & A.M. Com.
 as laid out on ground.

C. S. 2351
J. A. STAMBAUGH
 SEC. 32, T. 13 S., R. 2W., W.M.
 SCALE: 1" = 3 CH. APRIL 1947

WALTER W. LARSEN
 COUNTY SURVEYOR

(Bearings from North line D.L.C. 42)

Application No. 39392
 Permit No. 29360