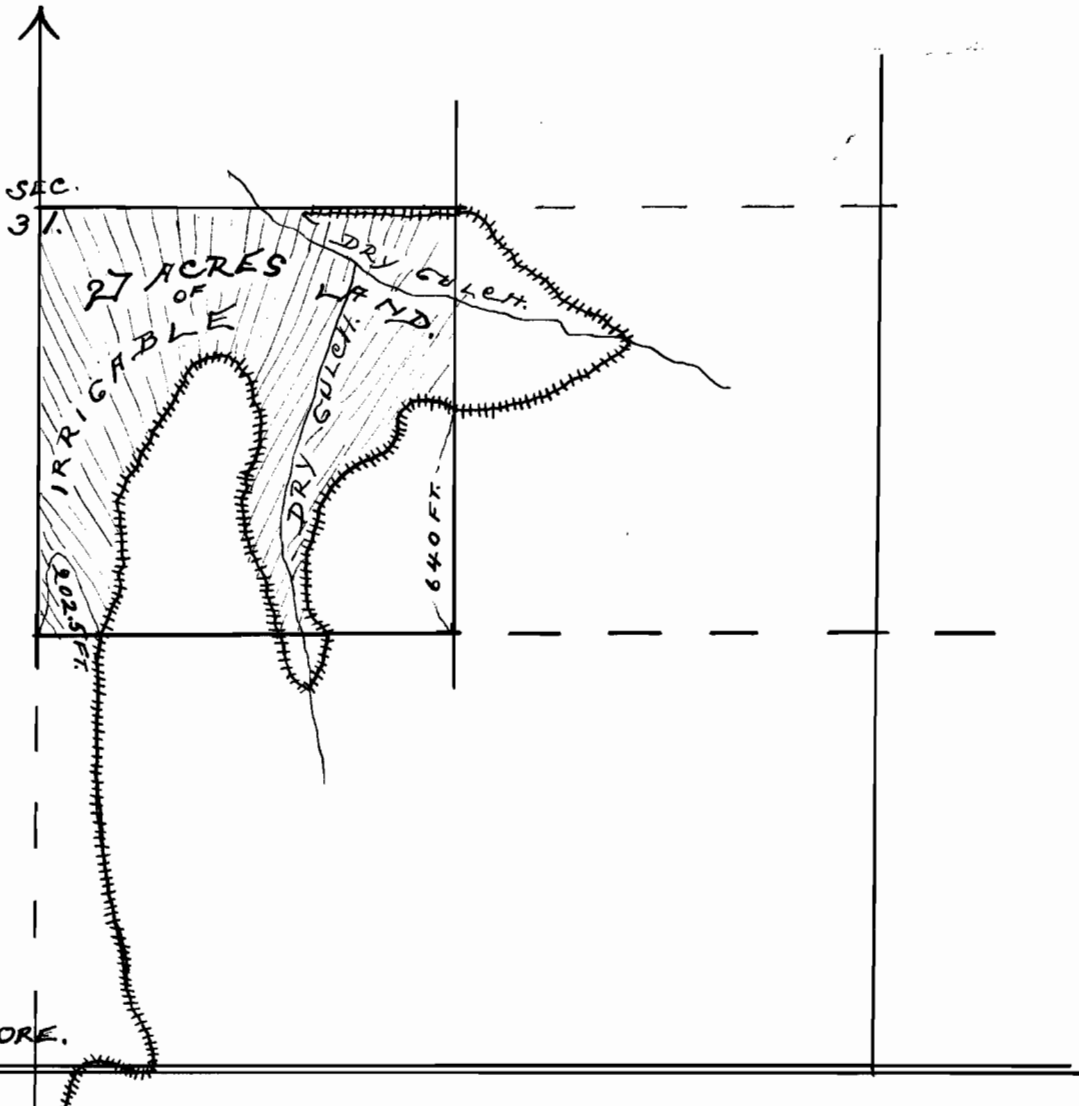


N



T9 S, R46 E, M, E, ORE.
T10 S, R46 E

SKETCH.

SHOWING
 GEORGE W. BLANK'S
 DESERT LAND
 IN SEC. 31, T9 S, R46 E, W. M., ORE.
 IRRIGATED + TO BE IRRIGATED WITH WATER
 DIVERTED + RUN FROM DAILY CREEK.
 SCALE, ONE INCH = 600 FT.
 SURVEYED JUNE 1, 1916.

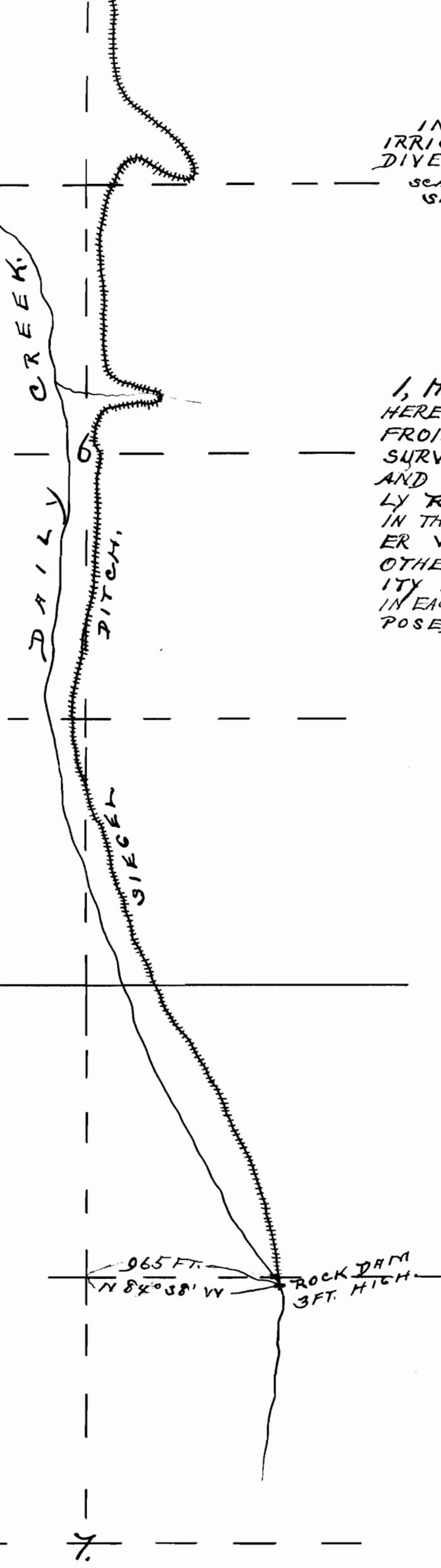
Ira L. Hoffman
 County Surveyor

CERTIFICATE OF SURVEYOR.

I, IRA L. HOFFMAN OF BAKER, ORE., DO
 HEREBY CERTIFY THAT THIS MAP WAS MADE
 FROM NOTE TAKEN DURING AN ACTUAL
 SURVEY MADE BY ME ON OCT. 28 + 29, 1914
 AND ON JUNE 1, 1916 AND THAT IT CORRECT-
 LY REPRESENTS THE WORKS DESCRIBED
 IN THE ACCOMPANYING APPLICATION, TOGETH-
 ER WITH THE LOCATION OF STREAMS AND
 OTHER DITCHES IN THE IMMEDIATE VICIN-
 ITY AND HAS WRITTEN THEREON THE AREA
 IN EACH LEGAL SUBDIVISION WHICH IT IS PRO-
 POSED TO IRRIGATE. *Ira L. Hoffman,*
 County Surveyor

STATE ENGINEER
 JUN 1
 1916

4960
 2966



965 FT.
 N 84° 38' W
 ROCK DAM
 3 FT. HIGH.