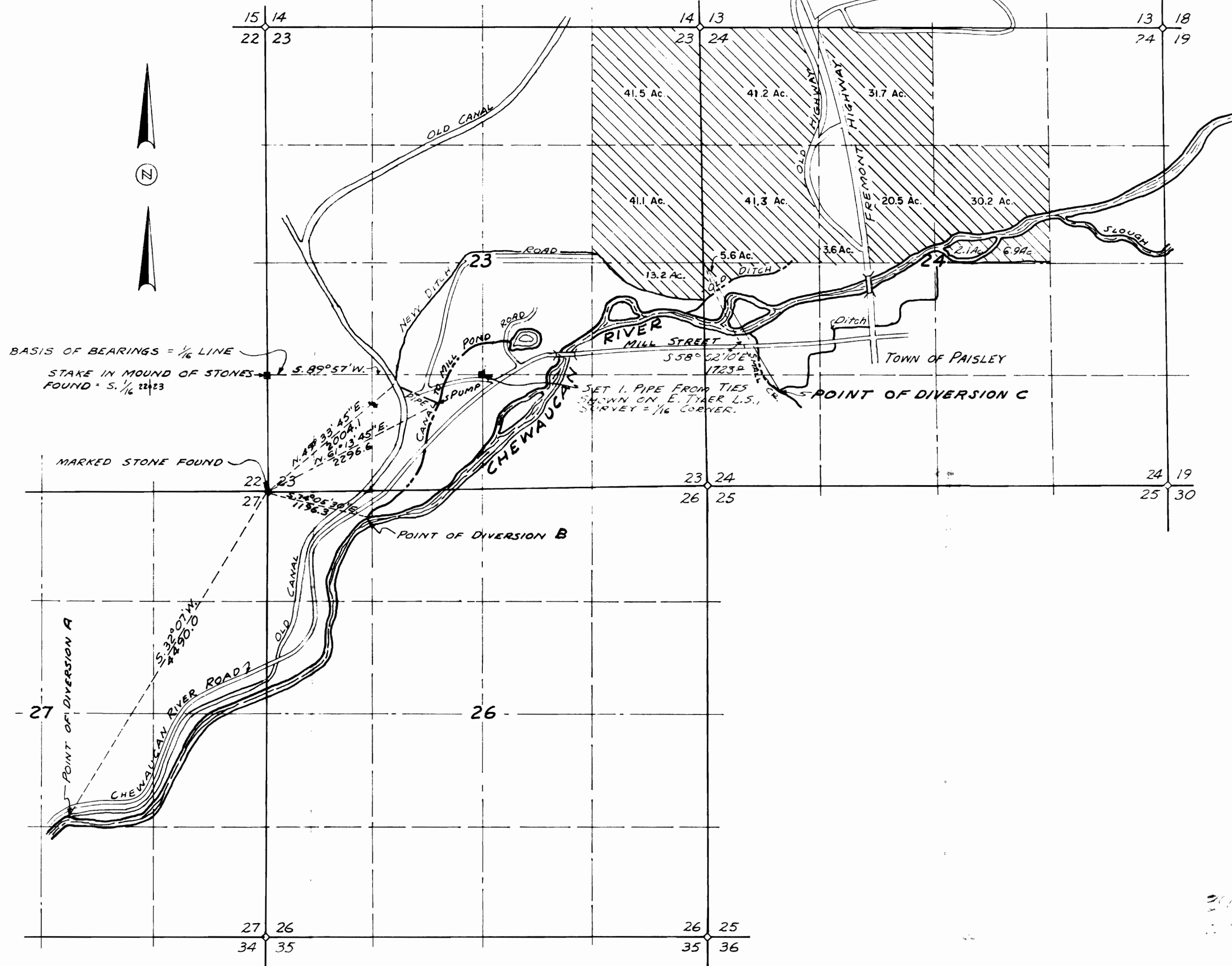


T. 33 S., R. 18 E., W.M.



BASIS OF BEARINGS = 1/16 LINE  
 STAKE IN MOUND OF STONES FOUND - S. 89° 57' W. 1/16 22423

MARKED STONE FOUND

SET 1. PIPE FROM TIES SHOWN ON E. TYLER L.S. SURVEY = 1/16 CORNER.



MAP SHOWING LANDS TO BE IRRIGATED BY <b>ROSS H. &amp; DORIS COLAHAN</b> IN T. 33 S., R. 18 E., W.M. LAKE COUNTY OREGON		
SCALE: 1"=1000'	JULY 1964	SHEET 1 OF 1
DRAWN BY: L.W.L., V.P.S.	<b>WILLIAM L. WALES, JR.</b> CONSULTING ENGINEER	JOB NO. 702-64
CHECKED BY: E.W.K.	KLAMATH FALLS, OREGON	