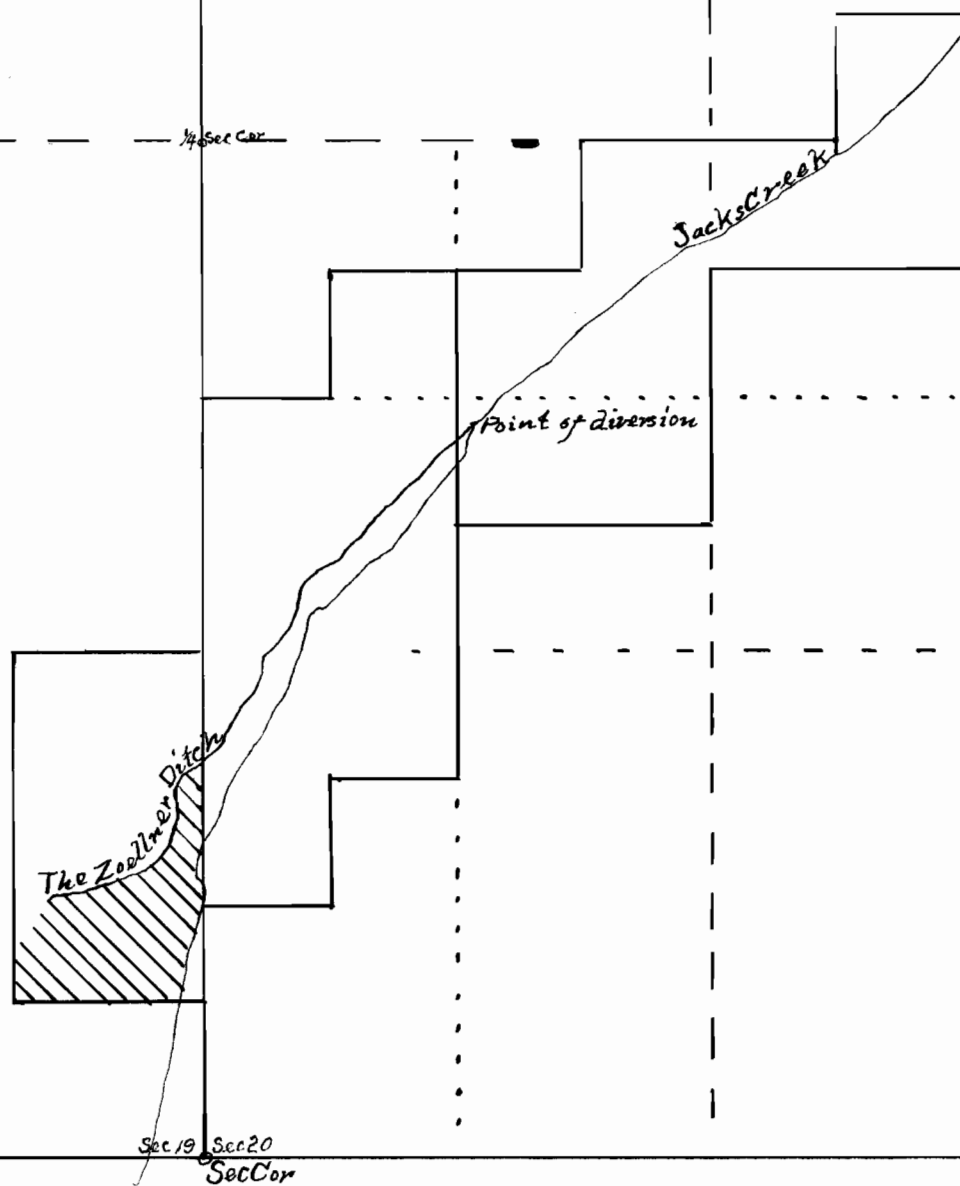


OFFICE OF STATE ENGINEER
RECEIVED
JUL 12 1916
GAINES, OREGON.

4466
2994

Section 19
T33S, R5W, W.M.

Section 20
T33S R5W, W.M.



I, A.W. Zoellner of Golden Oregon, do hereby certify that this map was made from notes taken during an actual survey made by me on June 28th 1916, and that it correctly represents the works described in the accompanying application, together with the location of streams and other ditches in the immediate vicinity.
Tract to be irrigated indicated by shading

Scale 1 in = 500 feet

A.W. Zoellner.