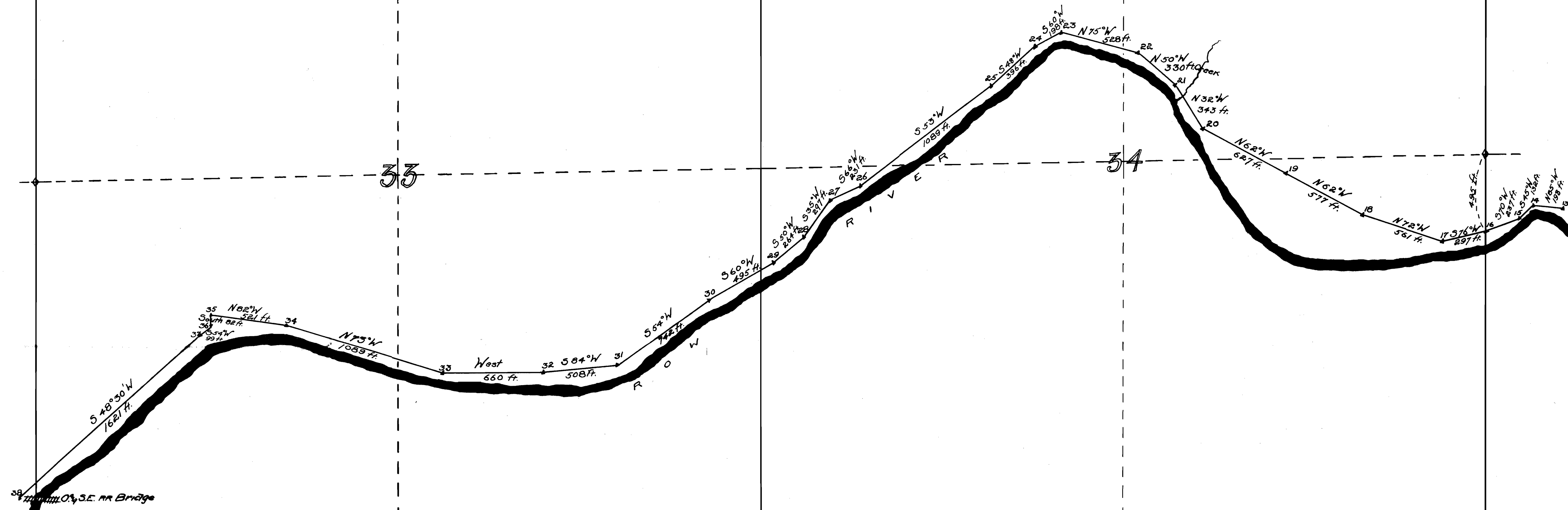


ARTHUR KAURTZ
1913

6700 E 1
139

132
P.C.S.



39 Mill Creek, S.E. nr Bridge

S 48° 30' W
1627 ft.

35 N 82° W
321 ft. 34
S 47° 02' W
36
37 S 54° W
99 ft.

N 75° W
1059 ft.

33 West
660 ft.

32 S 84° W
508 ft.

31 S 54° W
742 ft.

30 S 60° W
495 ft.

S 55° W
1089 ft.

S 53° W
336 ft.

S 10° W
23

N 75° W
528 ft.

22 N 50° W
330 ft. 21

N 32° W
343 ft.

20 N 62° W
627 ft.

19 N 52° W
577 ft.

18 N 72° W
561 ft.

N 57° W
297 ft.

N 85° W
188 ft.

S 70° W
257 ft.

S 70° W
257 ft.

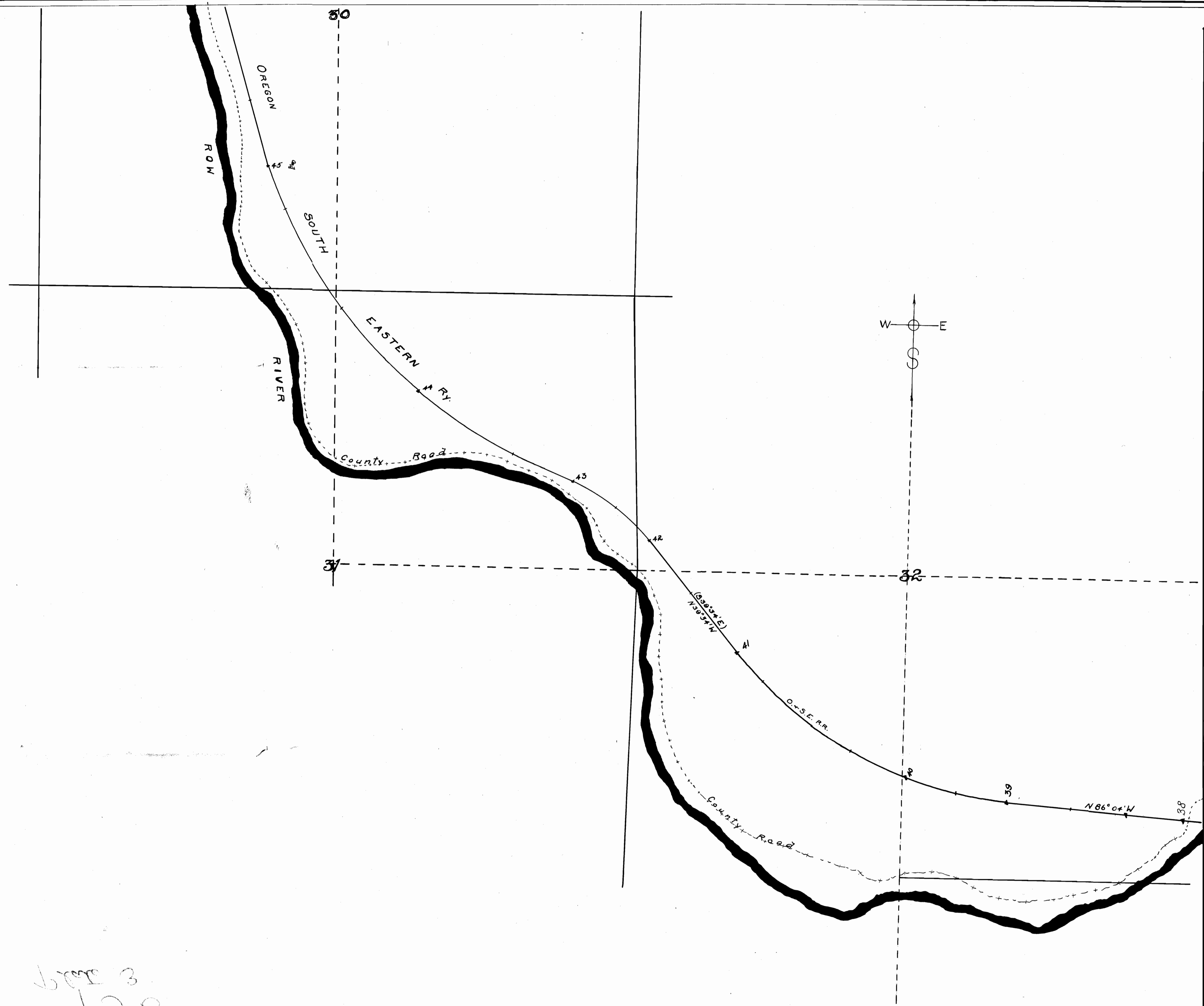
S 70° W
257 ft.

S 70° W
257 ft.

Tps 21 S
22 S

PLATE 2

U.S. GEOLOGICAL SURVEY
JULY 1908

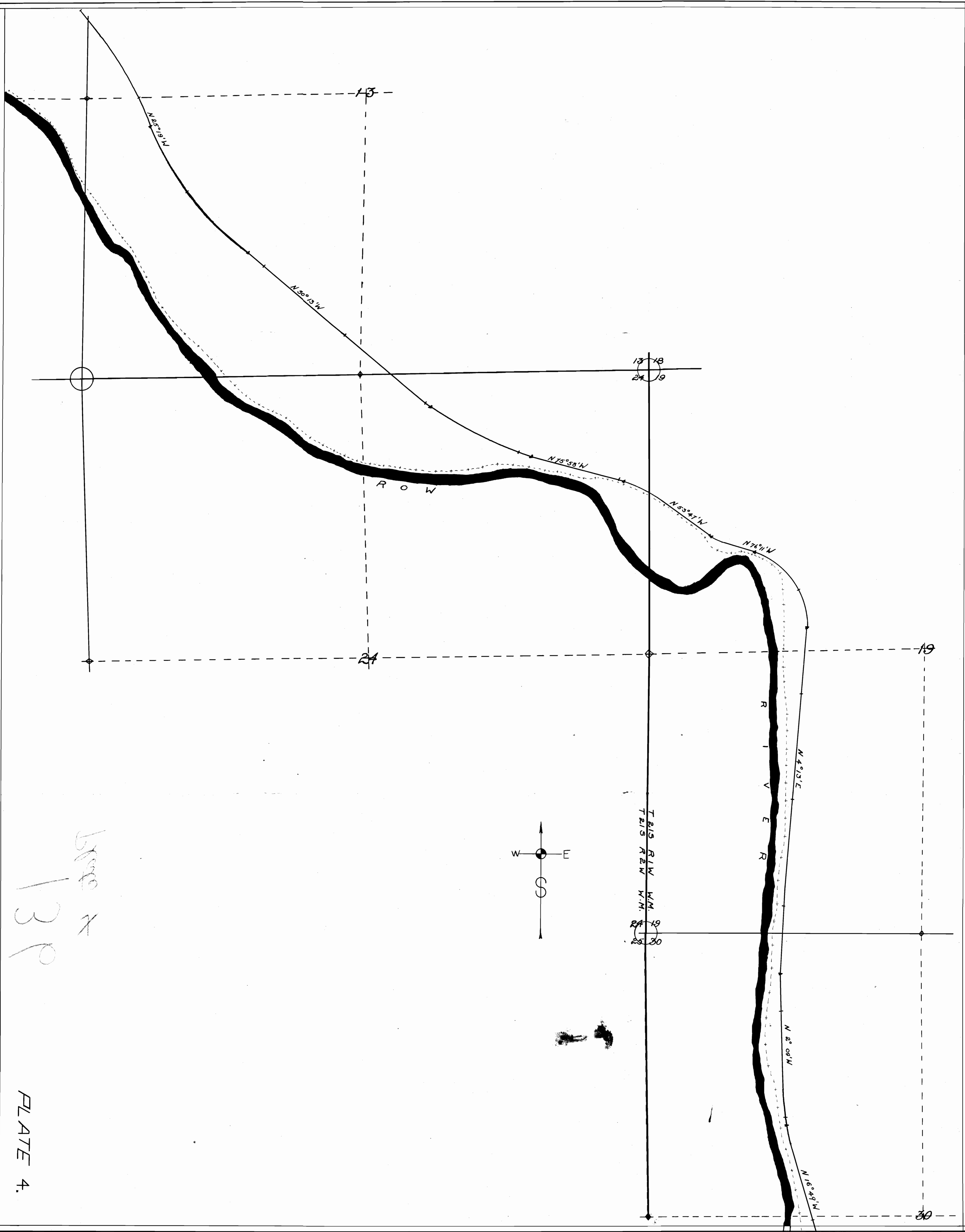


base 3
139

PLATE 3.

TAYLOR & HURTE
ENGINEERS
JUN 1 1908

JANOR & KRAVITZ
ENGINEERS
JUN 1 1909



Sheet 139

PLATE 4.

JUN 1 1899
TAMM, OR & HODGINS
ENGINEERS

139
7 5/16

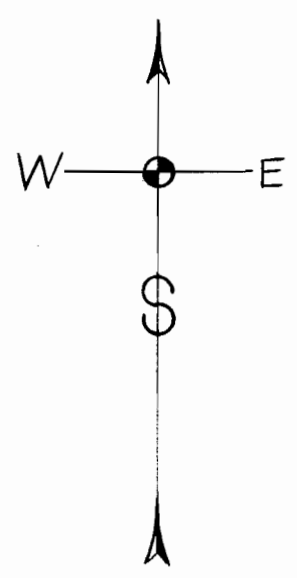
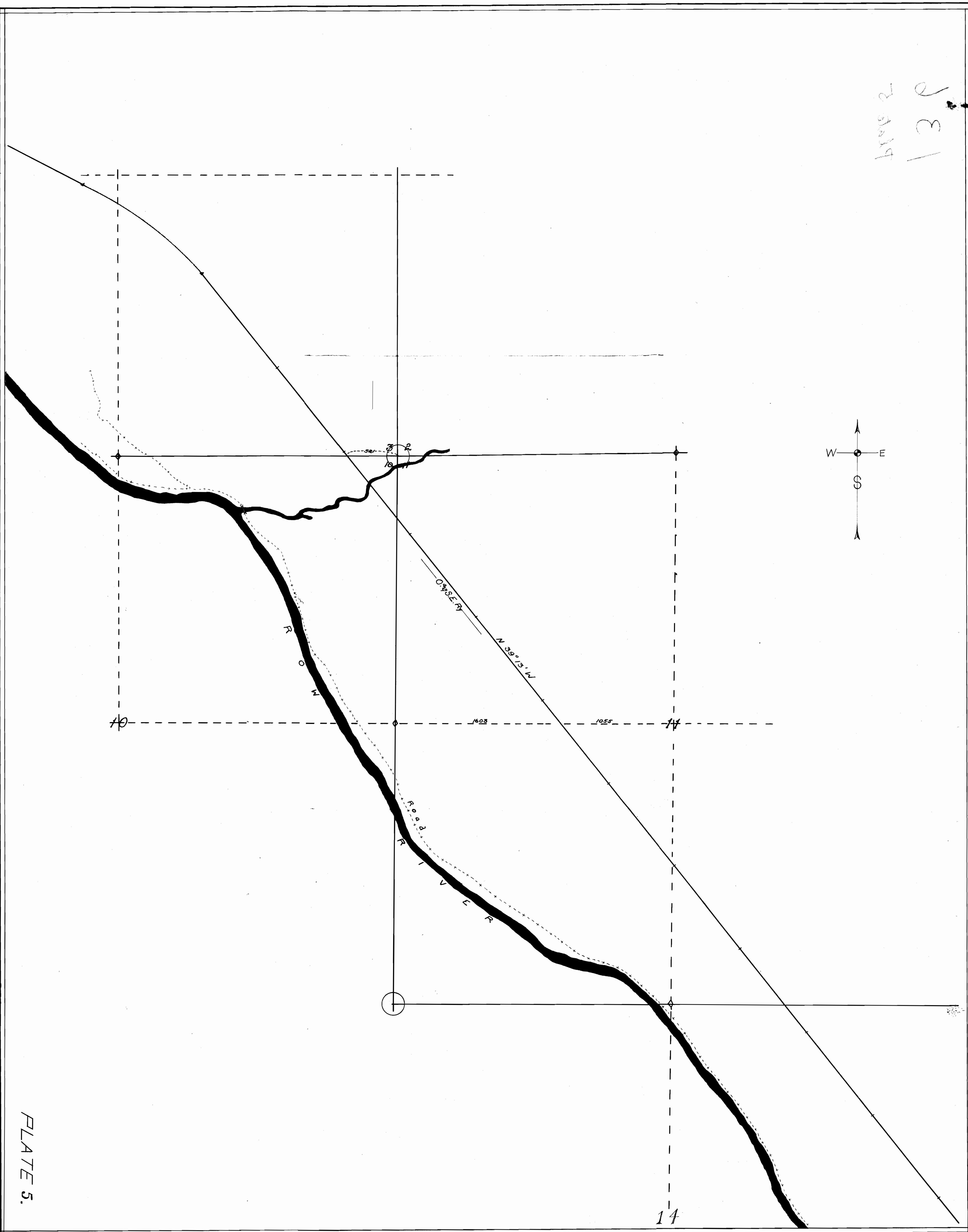
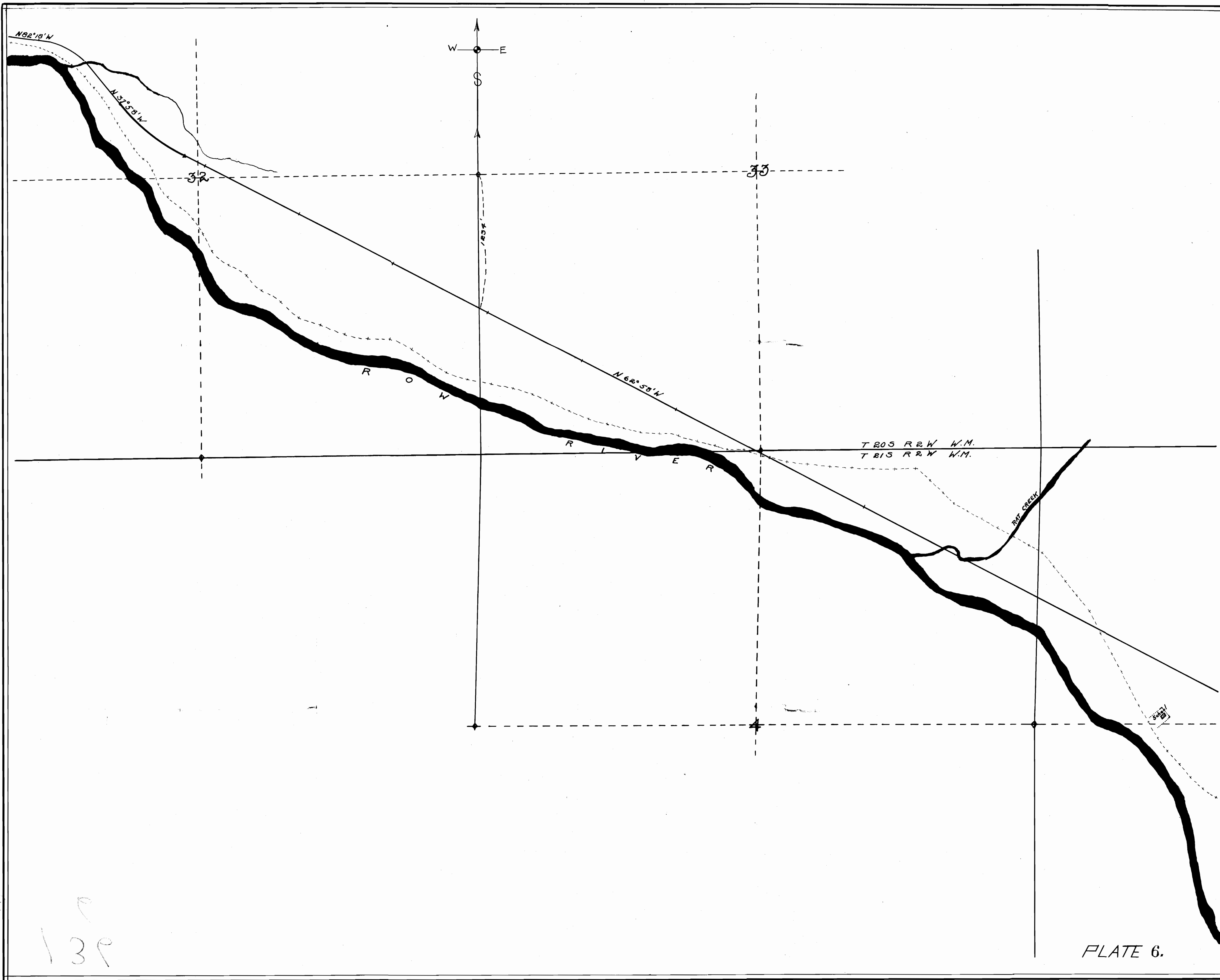


PLATE 5.

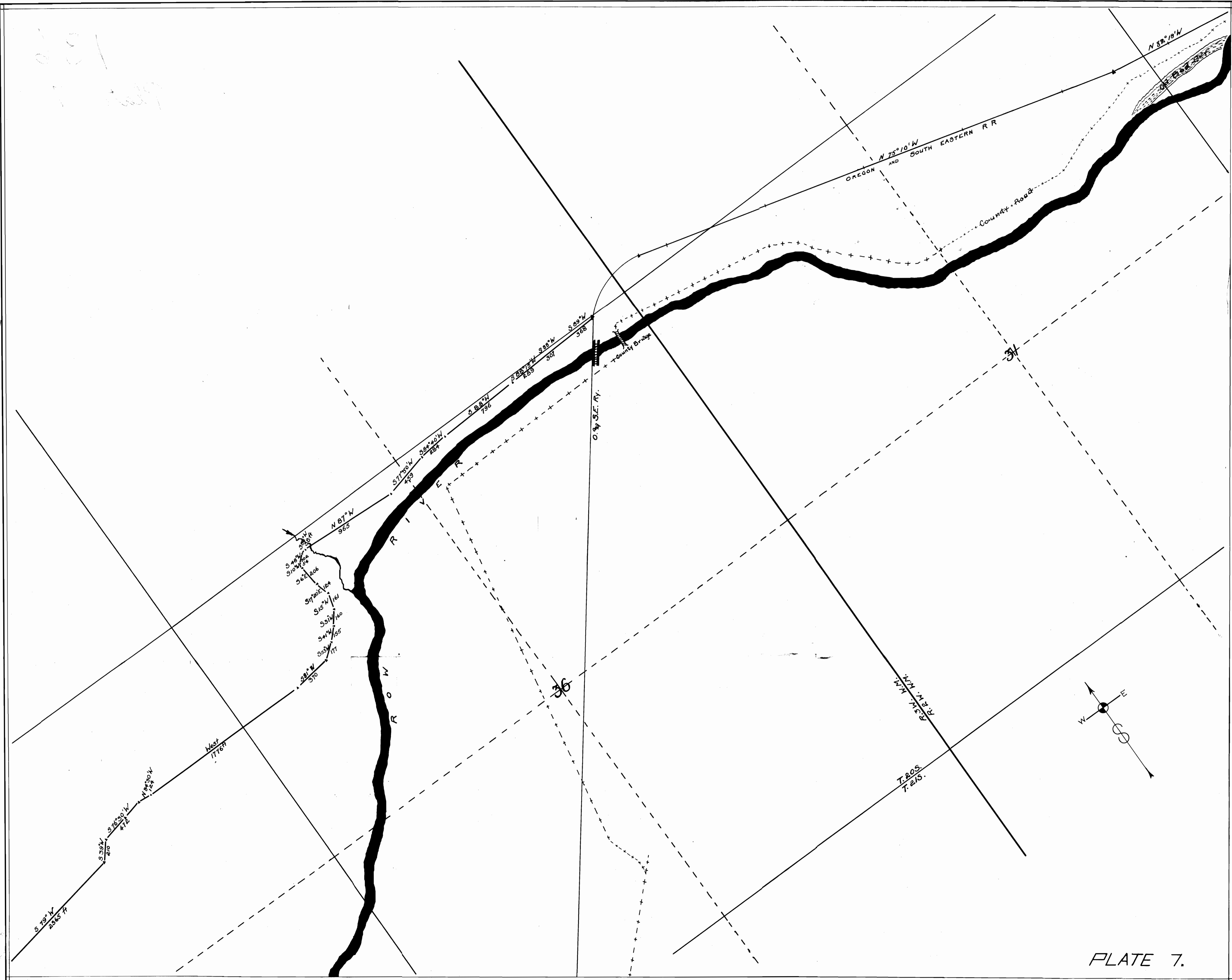
14



139
 JUN 1902

PLATE 6.

201
1899



TAYLOR, KURTZ
ENGINEERS
JUN 4 1909

20
130

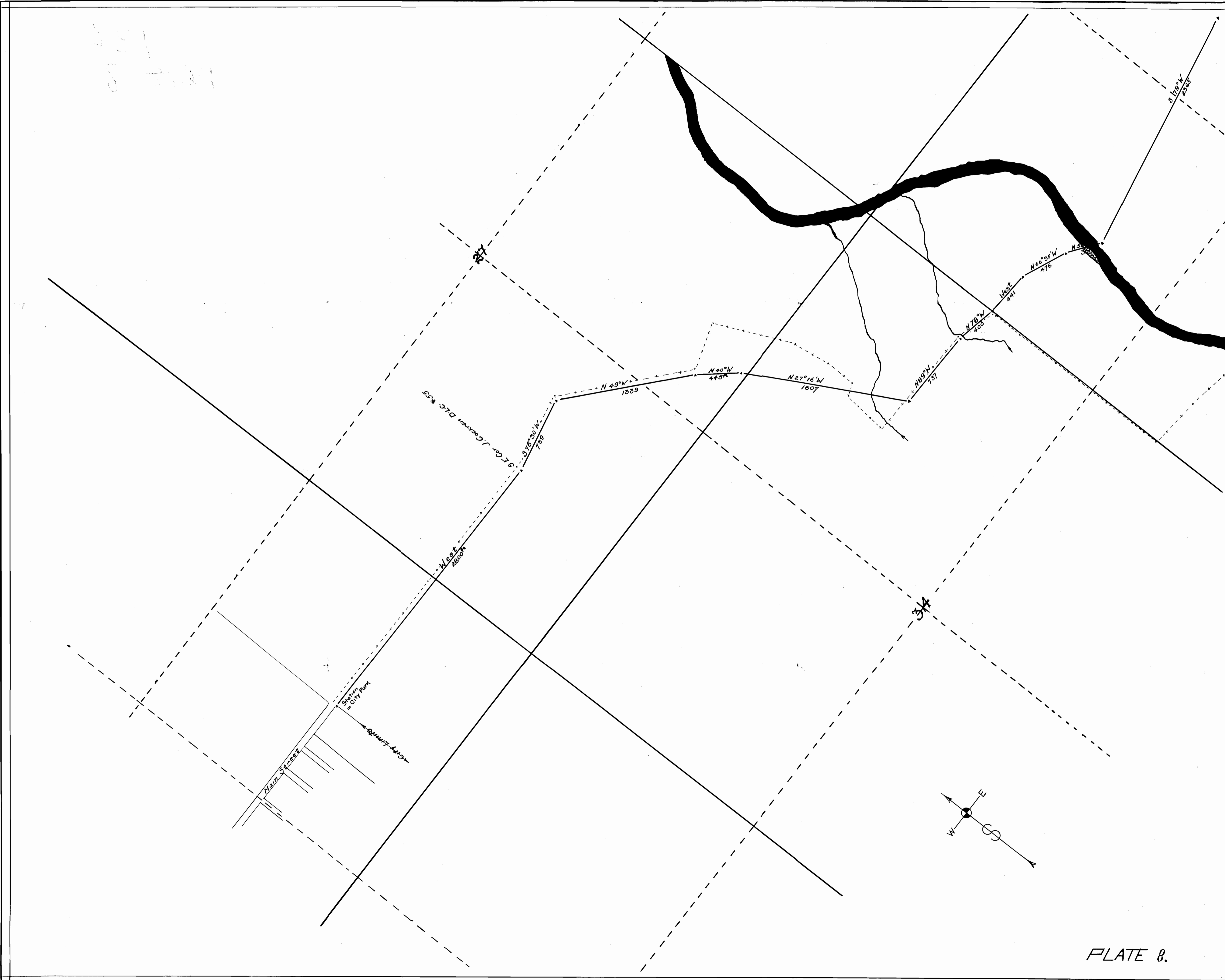


PLATE 8.

13/10
p. et al.

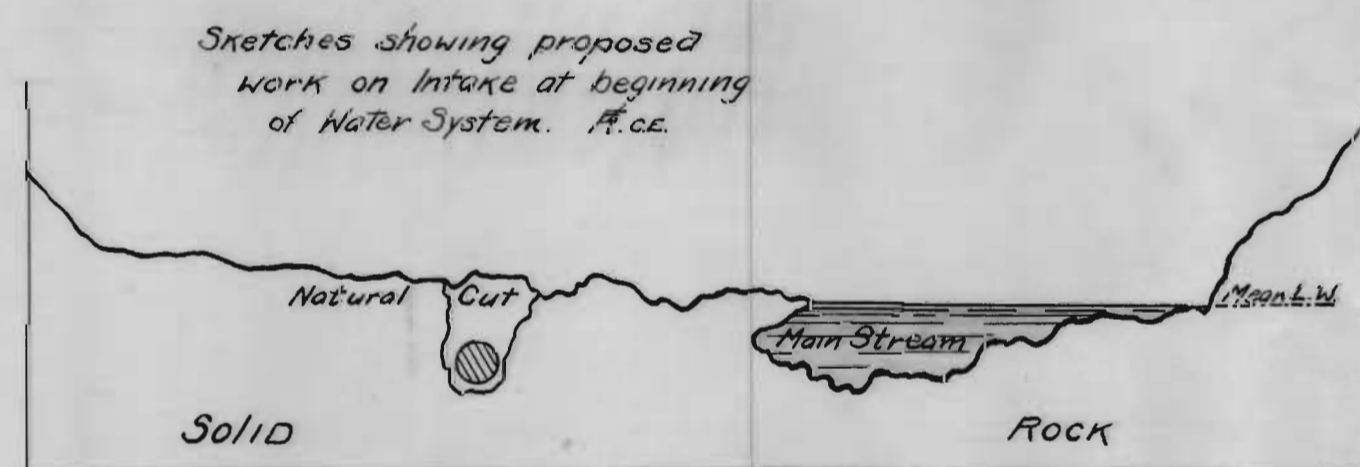
MAP SHOWING LOCATION OF SURVEY OF THE COTTAGE GROVE WATER SYSTEM

ACROSS TPS. 20, 21 & 22 S.,
RGS. 1, 2 & 3 W., W.M.

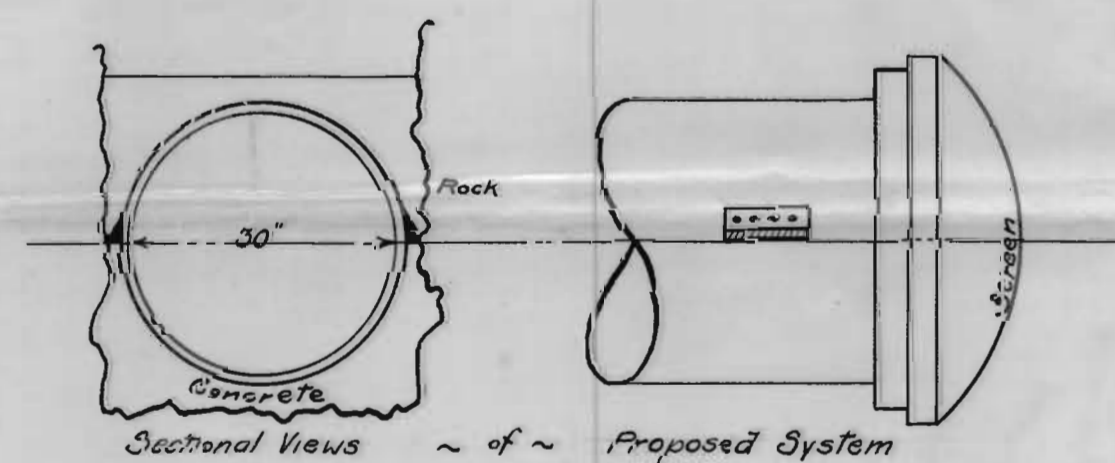
LANE COUNTY, OREGON.

SCALE, 1 INCH = 400 FT.

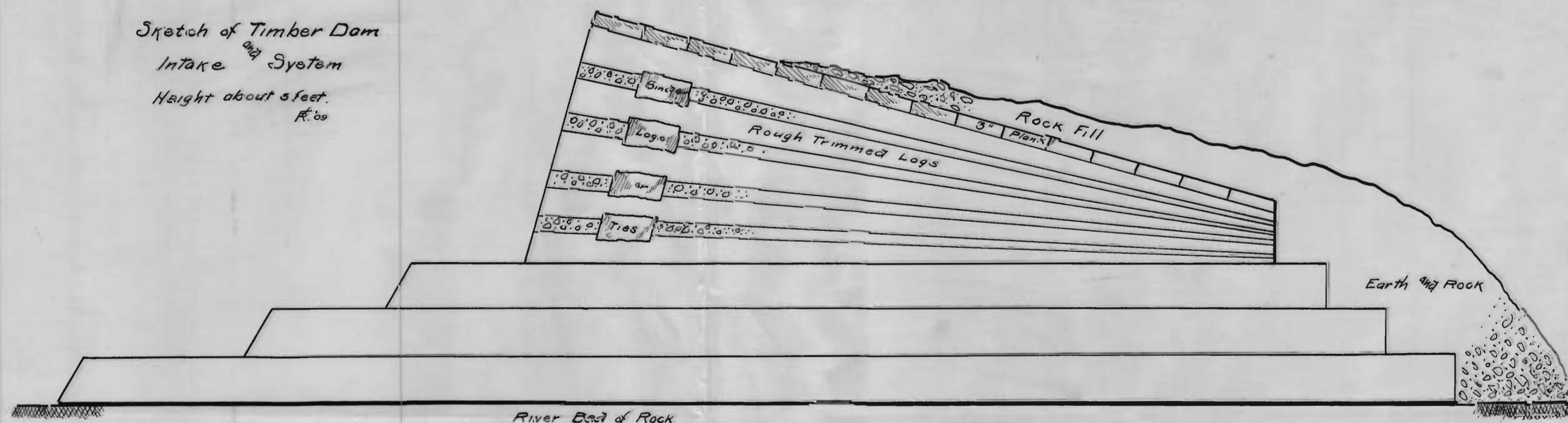
Taylor & Kurtz - Engineers



Conventional Survey Signs &
 ▲ designates angle point - numbered in Notes.
 + = 1000 ft. stations on O. & S.E. Ry.
 --- designates 1/4 Sec. lines & full lines = Sec. lines.
 +--+ County Roads.



Sketch of Timber Dam
Intake System
Height about 3 feet.
R.C.C.



Certificate of Surveyor

State of Oregon } ss.
County of Lane }

I, Harvey Taylor, hereby certify that this Map was made from notes taken during an actual Survey made by me on May 18, 1909, and that it correctly represents the marks described in the accompanying application, together with the location of streams and other ditches (creeks) in the immediate vicinity except on PLATES 3, 4, 5, 6 & 7, where by permission I followed the N line Oregon & South Eastern R.R. right of way according to the Plot of Survey of said R.R.

Harvey Taylor
Surveyor

Subscribed & sworn to before me this 4th day of June, 1909.

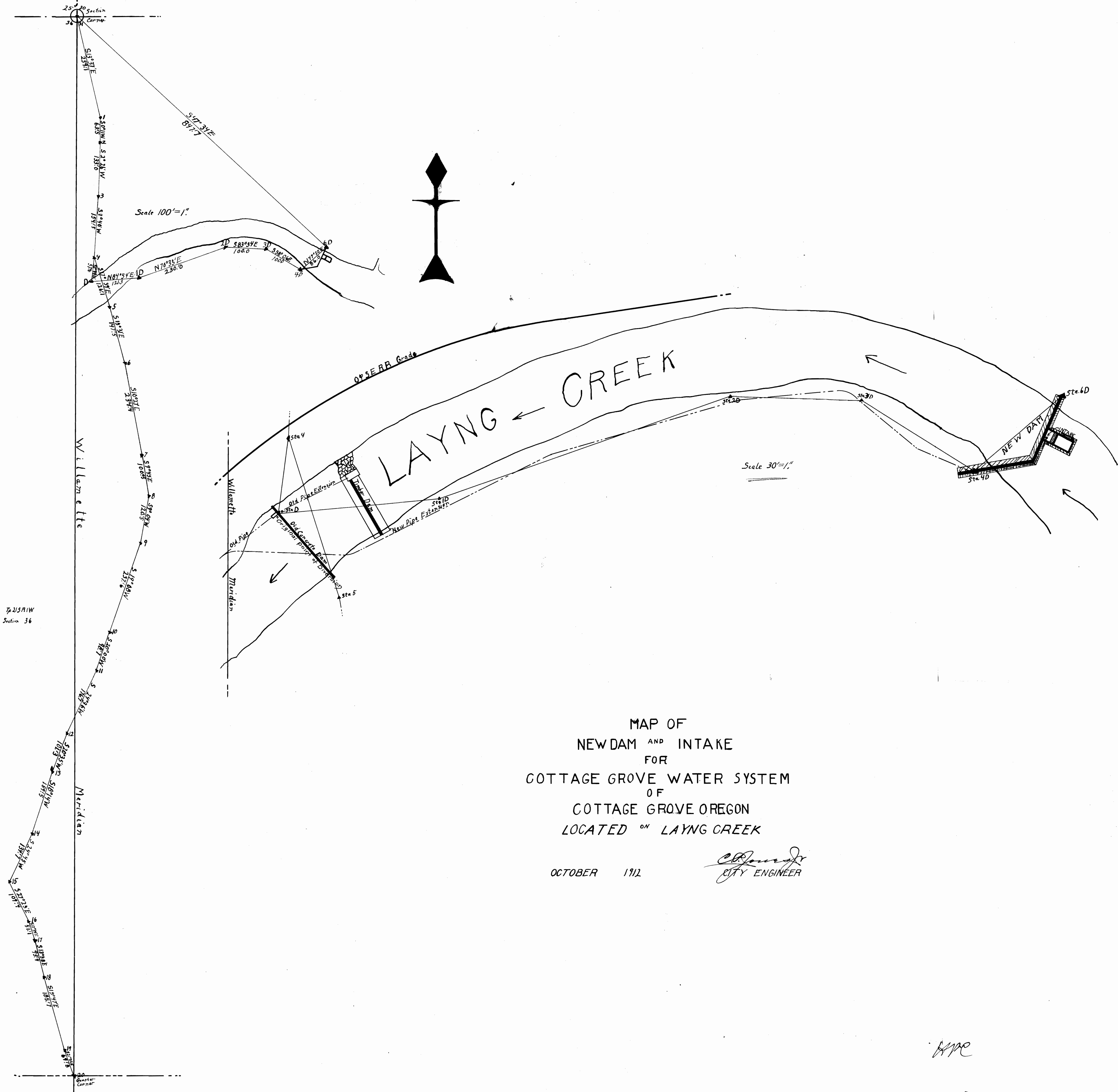
J. C. ...
Notary Public
seal

Witnesses

A. C. Dondard
Francis P. Kurtz C.E.



TAYLOR-KURTZ
JUN 3 1909



MAP OF
 NEWDAM AND INTAKE
 FOR
 COTTAGE GROVE WATER SYSTEM
 OF
 COTTAGE GROVE OREGON
 LOCATED ON LAYNG CREEK

OCTOBER 1912

C. J. ...
 CITY ENGINEER

HPC

Amended Map received Oct. 19/12