
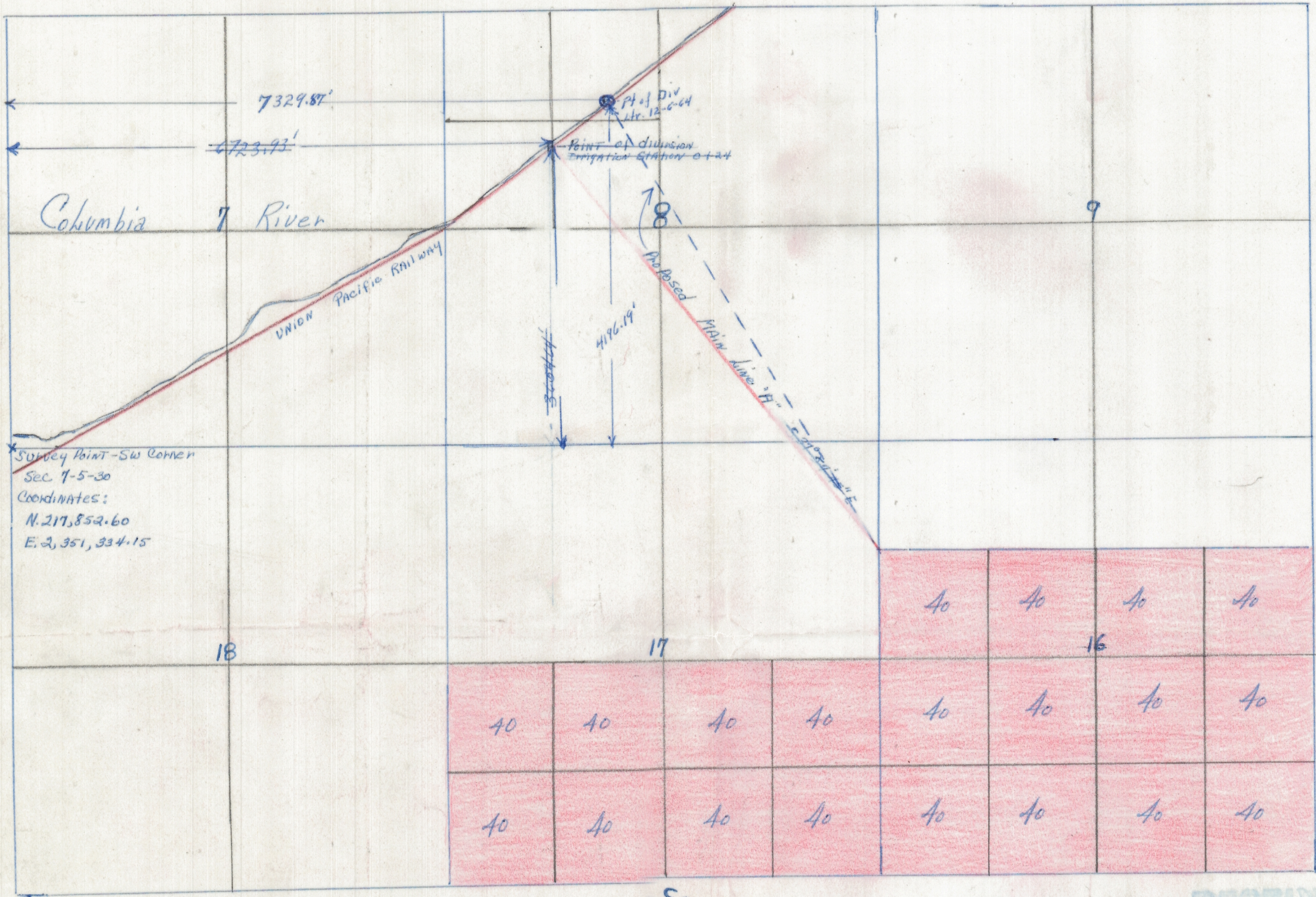


Application No. 40223  
Permit No. 30000

T. 5 N., R. 30 E., W.M.

 To be irrigated

- N -



Survey Point - SW Corner  
Sec 7-5-30  
Coordinates:  
N. 217,852.60  
E. 2,351,334.15

RECEIVED  
NOV - 2 1964  
STATE ENGINEER  
SALMON, OREGON