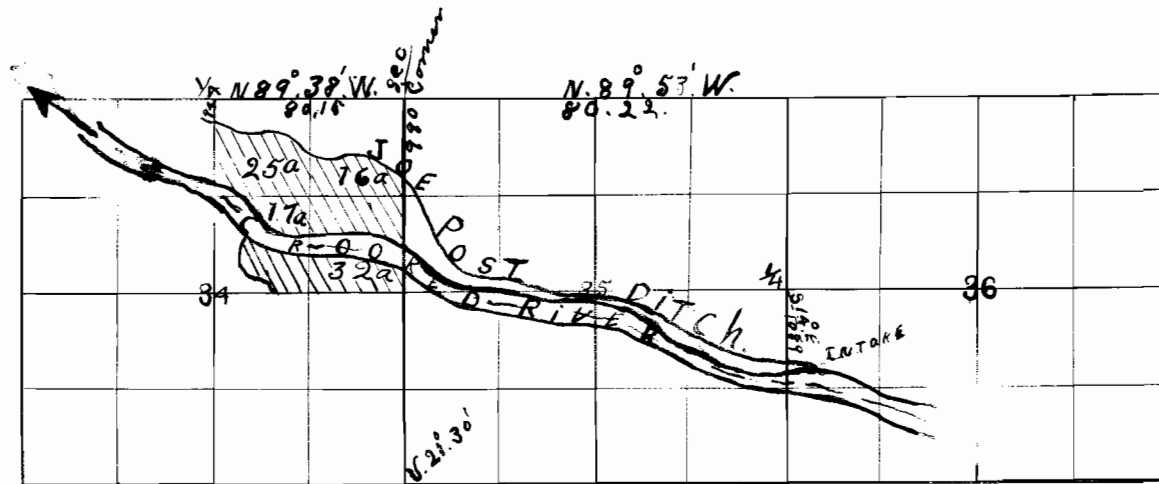


Township 16 S. Range 19 E. W. M.

OFFICE OF STATE ENGINEER
 REDEVELOPMENT
 JUL 1916
 TALSMA - OREGON

503 R
 3003



Intake S. 14° 0' E. 1089. From 1/4 Sec. corner
 between Sec. 36 and 35, T. 16 S. R. 19 E. W. M. Thence
 N. 70° 0' W. 400. N. 81° 30' W. 100. N. 88° 0' W. 200. N. 70° 0' W. 300. N. 60° 31' W.
 300. S. 64° 45' W. 200. S. 71° 0' W. 400. N. 65° 15' W. 100. N. 23° 0' W. 100.
 N. 60° 0' W. 100. N. 28° 30' W. 100. N. 64° 0' W. 400. S. 81° 30' W. 180. N. 68° 0' W. 200.
 N. 88° 45' W. 200. N. 70° 0' W. 180. N. 74° 0' W. 225. N. 34° 0' W. 275.
 N. 47° 0' W. 100. N. 34° 0' W. 200. N. 22° 0' W. 200. N. 56° 0' W. 160. N. 32° 0' W. 140.
 N. 40° 30' W. 300. N. 75° 0' W. 100. N. 84° 45' W. 100. S. 82° 15' W. 400.
 N. 64° 30' W. 100. S. 84° 0' W. 100. N. 77° 30' W. 200. N. 51° 0' W. 300. N. 34° 0' W. 100.
 N. 14° 0' W. 800. N. 57° 30' W. 200. N. 54° 15' W. 200. N. 87° 30' W. 100. S. 67° 0' W. 100.
 S. 79° 15' W. 200. S. 81° 0' W. 100. N. 81° 10' W. 100. N. 55° 0' W. 100. S. 83° 0' W. 100.
 N. 61° 15' W. 100. N. 43° 15' W. 200. N. 20° 15' W. 300. N. 77° 45' W. 300. S. 43° 30' W. 200.
 N. 60° 0' W. 700. Terminus 194. S. of 1/4 Sec. corner, between Sec. 34
 and 27, T. 16 S. R. 19 E. W. M.

I Wade Huston of Pineville, Cook
 County Oregon do hereby certify that this
 map was made from notes taken during
 an actual survey made by me on June 24,
 1916 and that it correctly represents the
 works described in the accompanying
 application, together with the location
 of ditches in the immediate vicinity, and
 has written thereon the area in each
 smallest legal subdivision which it
 is proposed to irrigate.

Wade Huston
 Surveyor.