

REGISTERED
OREGON
LAND SURVEYOR

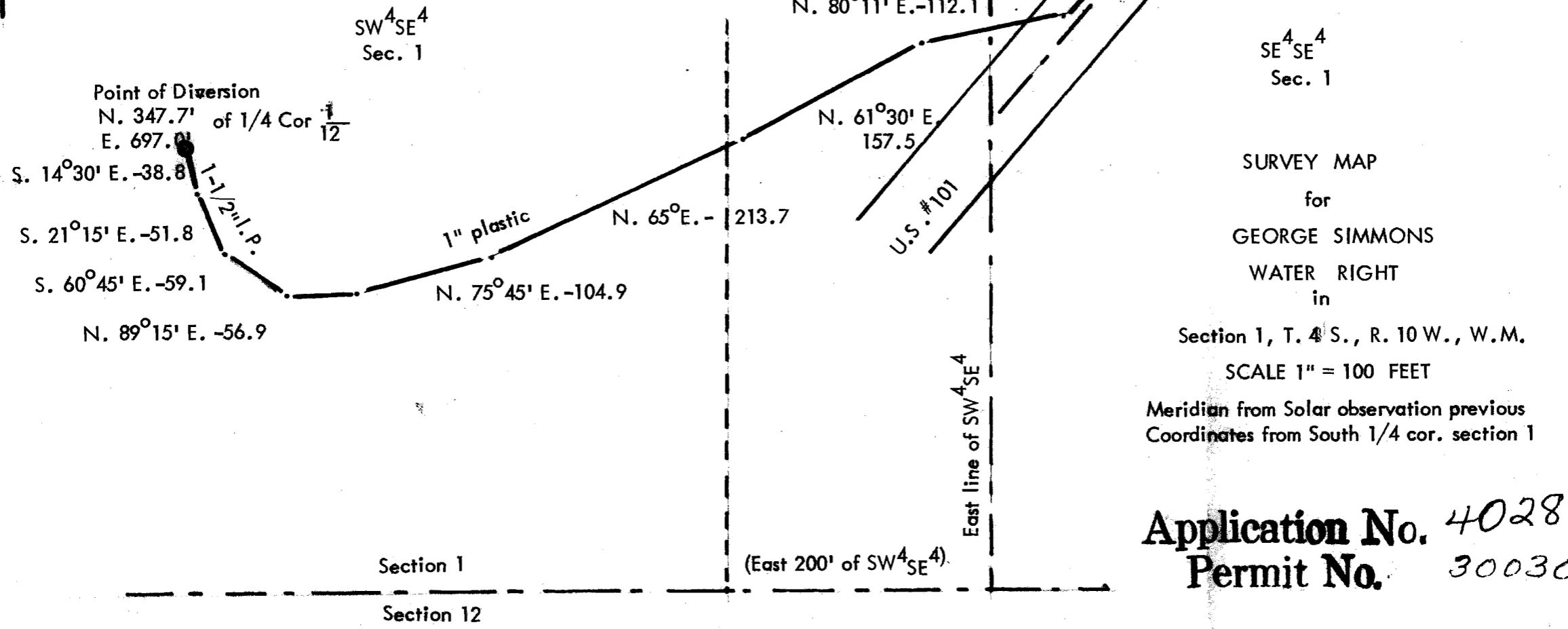
John L. Carllich

MAY 8 1964
JOHN L. CARLICH
287

RECEIVED
SEP 17 1964
STATE ENGINEER
SALEM, OREGON



Point of Use



SURVEY MAP
for
GEORGE SIMMONS
WATER RIGHT
in

Section 1, T. 4 S., R. 10 W., W.M.
SCALE 1" = 100 FEET

Meridian from Solar observation previous
Coordinates from South 1/4 cor. section 1

Application No. 40285
Permit No. 30030