

RANGE 4 W.

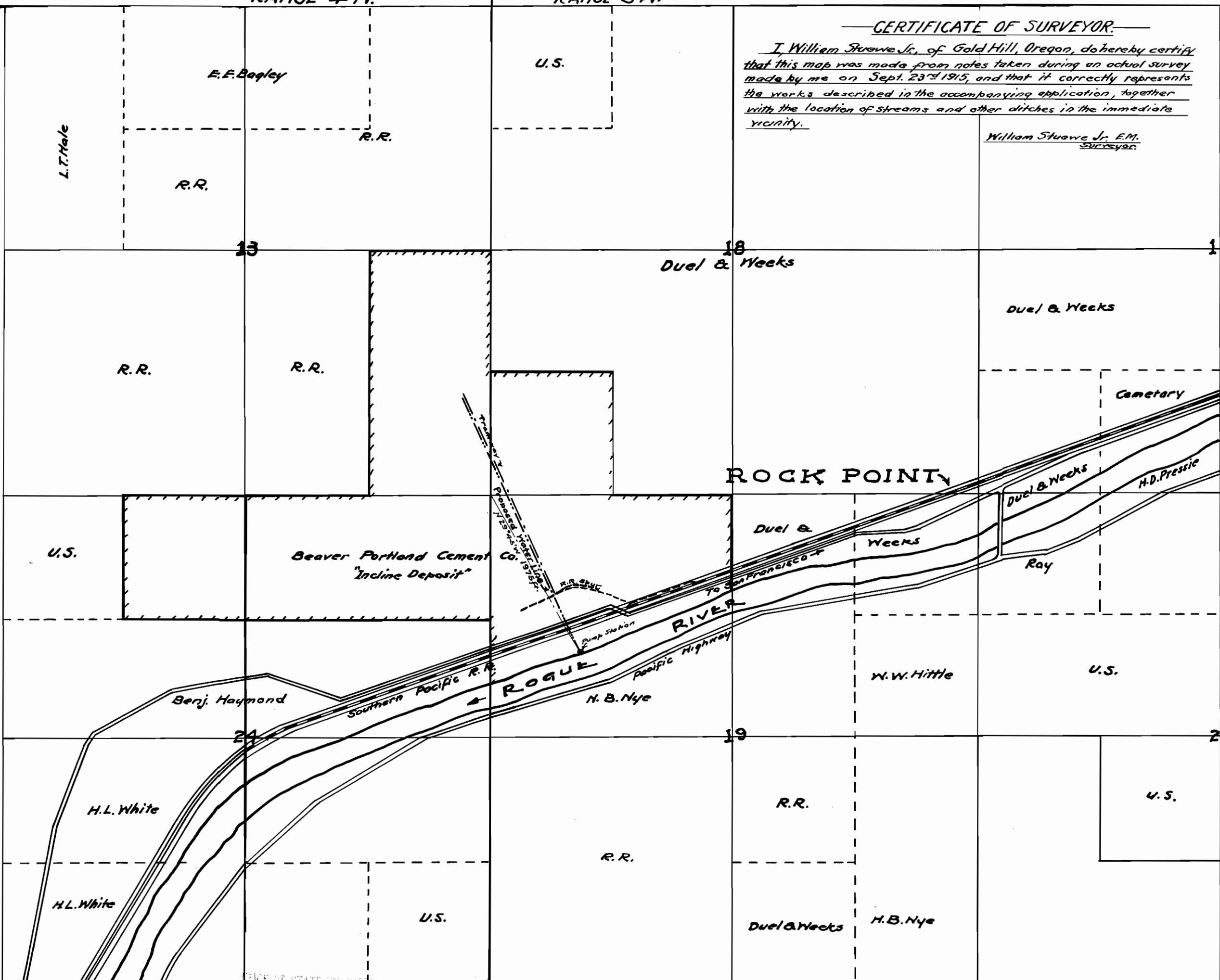
RANGE 3 W.

CERTIFICATE OF SURVEYOR.

I, William Stuewe Jr., of Gold Hill, Oregon, do hereby certify that this map was made from notes taken during an actual survey made by me on Sept. 23rd 1915, and that it correctly represents the works described in the accompanying application, together with the location of streams and other ditches in the immediate vicinity.

William Stuewe Jr. E.M. Surveyor.

TOWNSHIP 36 SOUTH



OFFICE OF STATE ENGINEER
RECEIVED
JUL 7 1915
GOLD HILL, OREGON

5052
3080

PROPOSED PUMP LINE AT "INCLINE DEPOSIT"
OF
BEAVER PORTLAND CEMENT CO.
GOLD HILL, ORE - JACKSON COUNTY. 6/16/15
Scale 1 in = 1000 Ft.