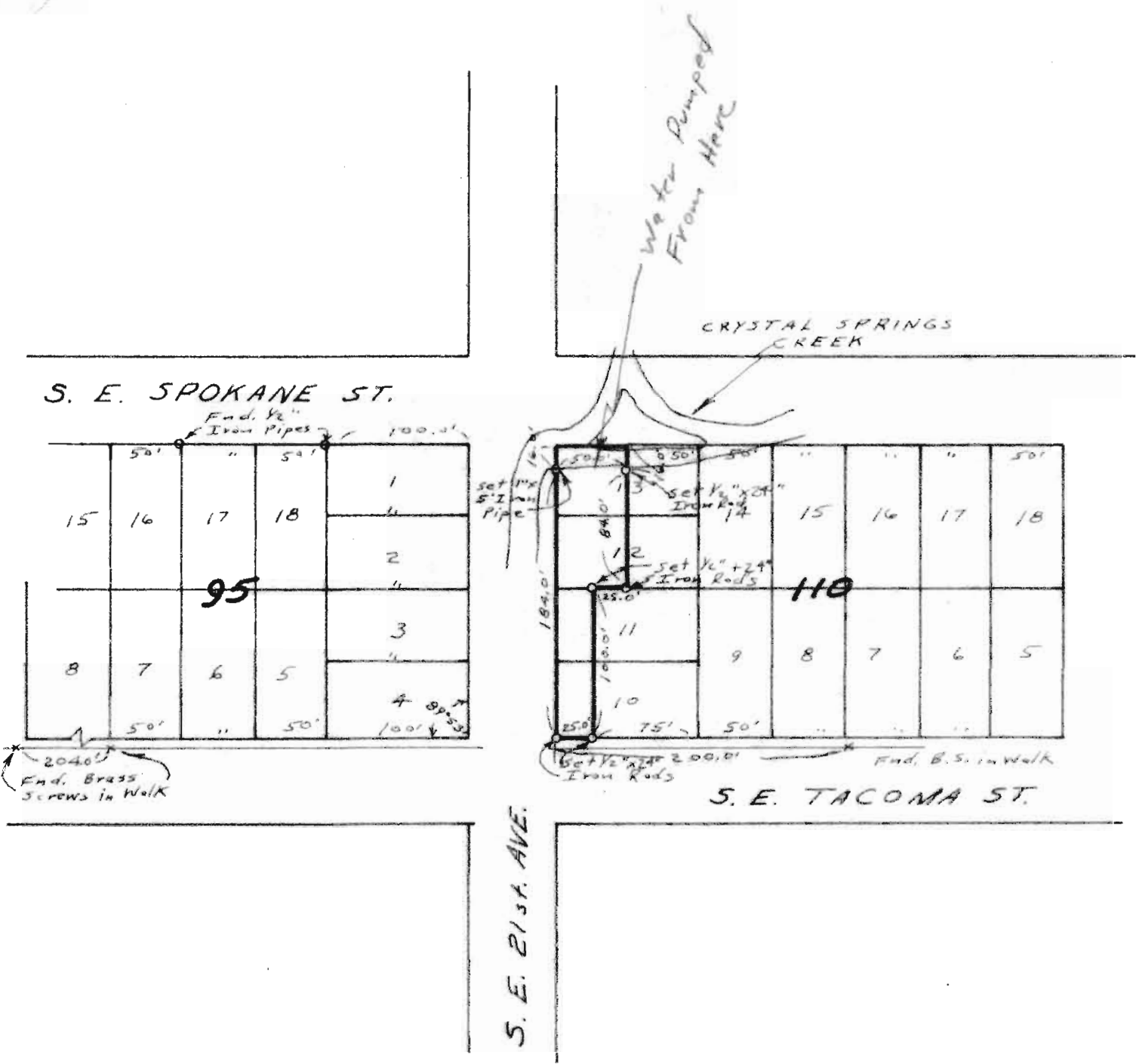


RECEIVED
 APR 20 1965
 STATE ENGINEER
 SALEM, OREGON

Application No. 41224
Permit No. 30822

REGISTERED
OREGON
 LAND SURVEYOR
Thomas H. Burton
 JAN. 18, 1963
 THOMAS H. BURTON
 590



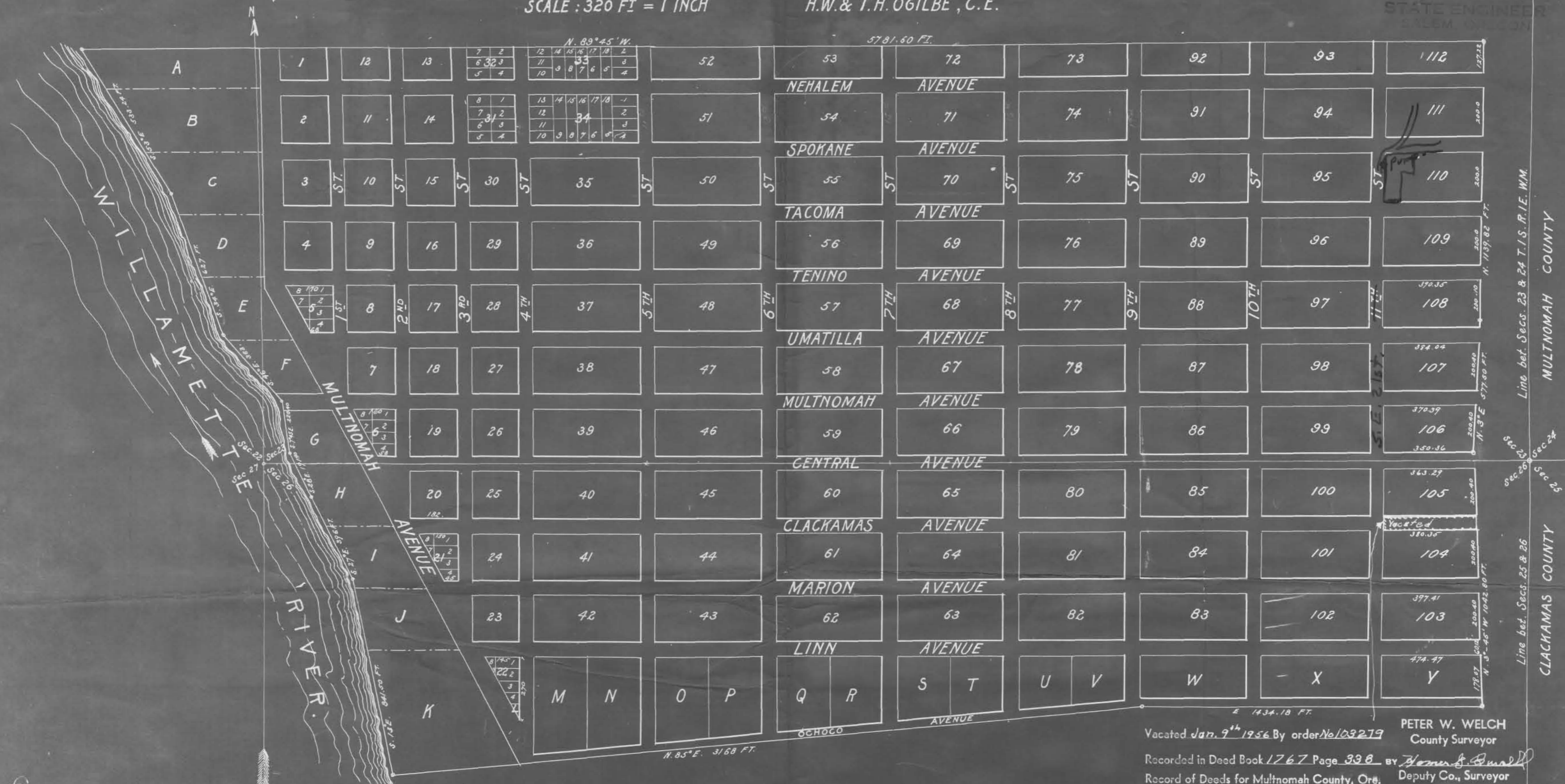
Survey of Part of Lots 10, 11, 12 & 13
 Block 110
 Sellwood
 City of Portland
 Multnomah County, Oregon
 S. E. 1/4 Sec. 23, T1S, R1E, W. M.
 Surveyed August 4, 1965
 By: Thomas Burton
 Scale 1" = 100'

TOWN OF SELLWOOD

SCALE: 320 FT = 1 INCH

H.W. & T.H. OGILBE, C.E.

RECEIVED
AUG 20 1965
STATE ENGINEER
OREGON



Explanations

All full lots in Blocks numbered from 1 to 112, are 50 by 100 feet. Lots are numbered in the large Blocks as shown in Block 31. Lots in small blocks are numbered as shown in Block 31. Blocks designated by letters are not divided into lots. Willamette Avenue and Multnomah Avenue west of Willamette Avenue are 80 feet wide. All other avenues and all streets are 60 feet in width. All streets and avenues laid out and designated on this map are dedicated to the use of the Public for open highways forever, with the following conditions and reservations to wit: The Sellwood Real Estate Company reserves to itself, its successors and assigns forever, the exclusive right to lay street car tracks, and to run thereon street and railroad cars on all streets and avenues. To put down water and gas pipes and conduits on all streets and avenues. To lay out and operate all wires for telephones, and to lay and put up all wires conducting electricity for furnishing light and motive power, also own and control all ferry right, ferry franchise, and ferry privileges from Multnomah County on any street or avenue which may hereafter be laid out on the land described in this map. In witness whereof the Sellwood Real Estate Company has hereunto set his hand and affixed its corporate seal on the 13th day of July 1892.

In presence of:
 O. P. Mason (P) W. J. Hume
 State of Oregon
 County of Multnomah

Be it remembered that on the 13th day of July A.D. 1892 before me the undersigned a Notary Public in and for said County personally came H. W. Ogilbe and T. H. Ogilbe of the Sellwood real estate company and F. Goodwin Secretary of said corporation by me known to be the persons described in and who executed the foregoing map, and known to me to be the persons described in and who as such officers executed the foregoing map of the town of Sellwood, and said H. W. Ogilbe and T. H. Ogilbe being by me duly sworn did depose and say that they were duly authorized by a resolution of the Board of Directors of said corporation to lay out and dedicate the streets and avenues therein platted and that the seal affixed to such map is the corporate seal of said company. In witness whereof I have hereunto set my hand and Notarial seal the date above written.

Filed for record and recorded July 14, 1892 at 10 o'clock A.M. by O. P. Mason, County Clerk and Recorder
 Book 11, page 243 by W. J. Hume, Deputy

Filed for record and recorded July 14, 1892 at 10 o'clock A.M. by O. P. Mason, County Clerk and Recorder
 Book 11, page 243 by W. J. Hume, Deputy
 Correct copy of Plat recorded at page 243 of Book 11 of Records of plats for Clackamas County

Sellwood Real Estate Company
 by (P) A. L. Dutton, President
 and (P) F. B. Goodwin, Secretary
 Seal
 W. J. Hume
 Notary Public in and for Oregon.
 H. W. Ogilbe
 T. H. Ogilbe
 S. J. M. Rausby, Recorder of Conveyances
 Clackamas County Oregon hereby certifies this to be a true and correct copy of Plat recorded at page 243 of Book 11 of Records of plats for Clackamas County

Vacated Jan. 9th 1956 By order No. 103279
 PETER W. WELCH
 County Surveyor
 Recorded in Deed Book 1767 Page 338 by Homer S. Small
 Record of Deeds for Multnomah County, Ore. Deputy Co., Surveyor

Line bet. Secs. 23 & 24 T. 1 S. R. 1 E. W.M.
 MULTNOMAH COUNTY
 Line bet. Secs. 25 & 26
 CLACKAMAS COUNTY