

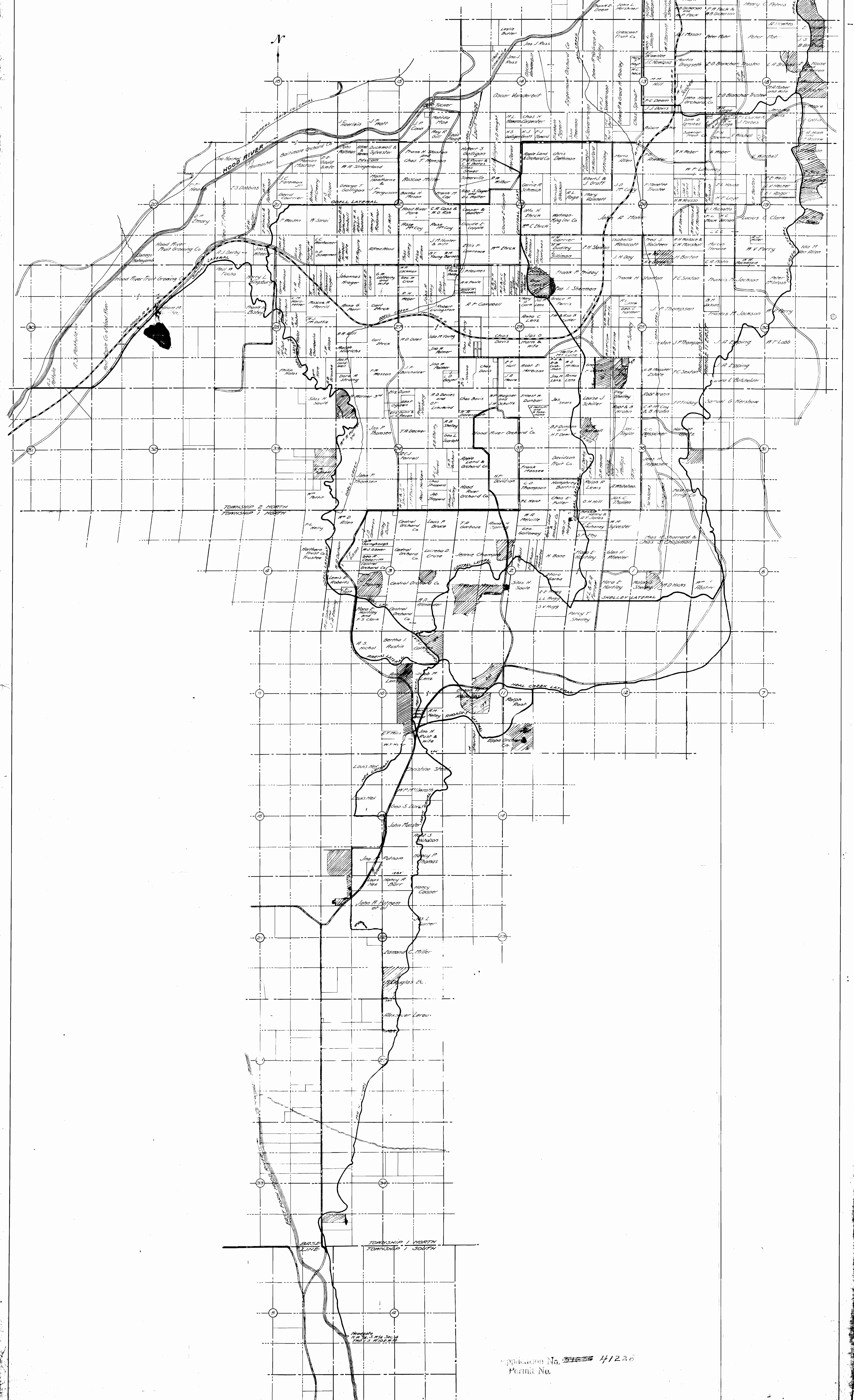
MAP OF PROPOSED EAST SIDE IRRIGATION DISTRICT HOOD RIVER COUNTY, OREGON

IN TOWNSHIPS 1, 2 & 3 NORTH — RANGES 10 & 11 EAST W.M.

*Canal located throughout from actual surveys, stadia measurements
Other information taken from County Maps — Notes are filed separately
Cities are from Hood River Platbook — Copyright
Scale 1" = 1/4 mile — Hood River Or. Reg. 1192
Containing 12,980 acres more or less*

Henry K. ... Civil Engineer

*Surveyed and approved by Petrus
Filed under 17-5-1912
Henry K. ... Surveyor
John C. Shaw, Supt.*



Application No. 41226
Permit No.