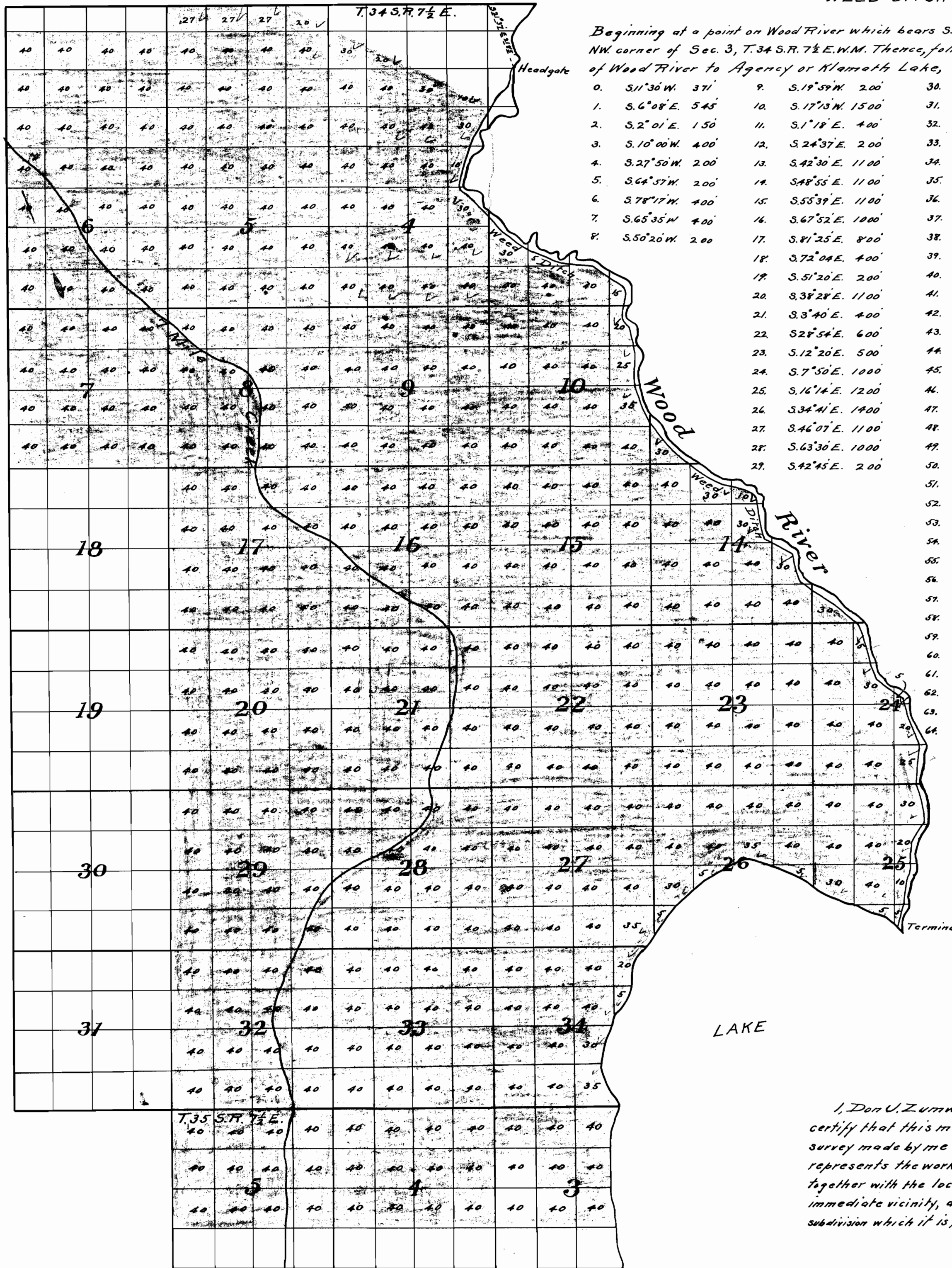


FIELD NOTE
OF
WEED DITCH



Beginning at a point on Wood River which bears S.21°37'E. 2185 ft. distant from the NW corner of Sec. 3, T.34 S. R. 7 1/2 E. W.M. Thence, following approximately the course of Wood River to Agency or Klamath Lake,

- | | | |
|--------------------|----------------------|---|
| 0. S.11°30'W. 371' | 9. S.19°59'W. 200' | 30. S.27°30'E. 200' |
| 1. S.6°08'E. 545' | 10. S.17°13'W. 1500' | 31. S.12°15'E. 1500' |
| 2. S.2°01'E. 150' | 11. S.1°18'E. 400' | 32. S.43°01'E. 1100' |
| 3. S.10°00'W. 400' | 12. S.24°37'E. 200' | 33. S.18°59'E. 1100' |
| 4. S.27°50'W. 200' | 13. S.42°30'E. 1100' | 34. S.41°08'E. 300' |
| 5. S.64°57'W. 200' | 14. S.48°55'E. 1100' | 35. S.72°27'E. 200' |
| 6. S.78°17'W. 400' | 15. S.55°39'E. 1100' | 36. S.78°48'E. 300' |
| 7. S.65°35'W. 400' | 16. S.67°52'E. 1000' | 37. S.50°48'E. 1600' |
| 8. S.50°20'W. 200' | 17. S.81°25'E. 800' | 38. S.44°17'E. 200' |
| | 18. S.72°04'E. 400' | 39. S.21°54'E. 500' |
| | 19. S.51°20'E. 200' | 40. S.38°04'E. 500' |
| | 20. S.38°28'E. 1100' | 41. S.21°09'E. 200' |
| | 21. S.3°40'E. 400' | 42. S.6°07'E. 300' |
| | 22. S.28°54'E. 600' | 43. S.21°28'E. 200' |
| | 23. S.12°20'E. 500' | 44. S.40°49'E. 500' |
| | 24. S.7°50'E. 1000' | 45. S.72°17'E. 100' |
| | 25. S.16°14'E. 1200' | 46. N.84°39'E. 200' |
| | 26. S.34°41'E. 1400' | 47. S.81°27'E. 100' |
| | 27. S.46°07'E. 1100' | 48. S.60°48'E. 100' |
| | 28. S.63°30'E. 1000' | 49. S.37°58'E. 100' |
| | 29. S.42°45'E. 200' | 50. S.24°23'E. 100' |
| | | 51. S.15°21'E. 1000' |
| | | 52. S.20°30'E. 60' |
| | | 53. S.80°09'E. 50' To E. bank of ditch. |
| | | 54. S.19°00'E. 750' |
| | | 55. S.5°47'E. 100' |
| | | 56. S.10°17'W. 550' |
| | | 57. S.23°16'W. 400' |
| | | 58. S.18°01'W. 120' |
| | | 59. S.0°14'W. 200' |
| | | 60. S.12°50'E. 400' |
| | | 61. S.16°35'E. 400' |
| | | 62. S.18°42'E. 700' |
| | | 63. S.14°52'E. 400' |
| | | 64. S.7°39'W. 300' |

Application No. 488,
Permit No. 309,

PLAT
OF
WEED DITCH

accompanying
Application to Appropriate Water.

Scale: 1" = 40 chs.

Surveyed November 1909.
By Don J. Zumwalt.

I, Don J. Zumwalt, of Klamath Falls, Oregon, do hereby certify that this map was made from notes taken during an actual survey made by me on November (ending) 15, 1909, and that it correctly represents the works described in the accompanying application, together with the location of streams and other ditches in the immediate vicinity, and has written thereon the area in each smallest legal subdivision which it is proposed to irrigate.

Don J. Zumwalt,
Surveyor.