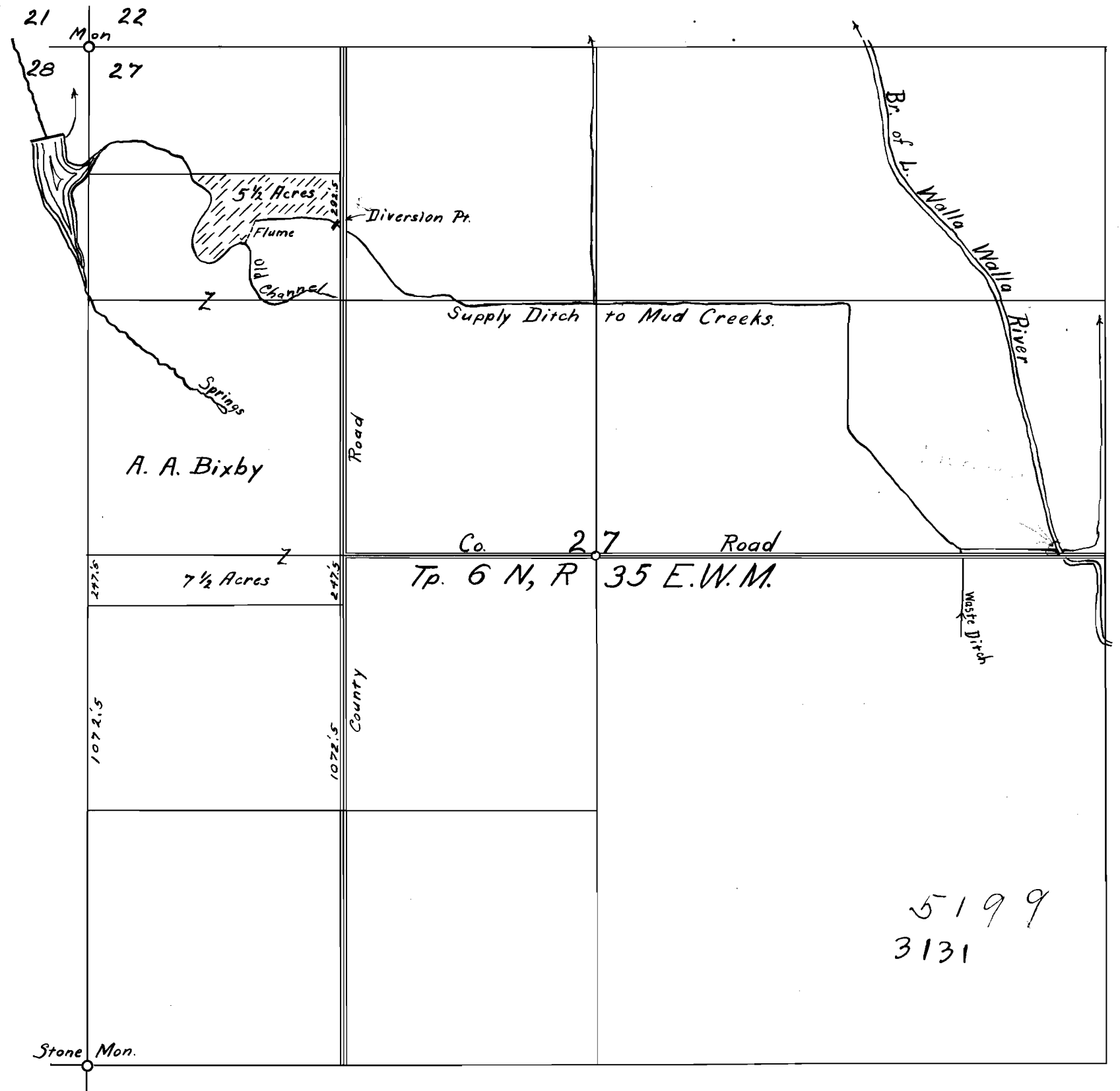


**SKETCH**  
 Showing  
 Land in S $\frac{1}{2}$ -NW $\frac{1}{4}$ -NW $\frac{1}{4}$ -Sec. 27,  
 Tp. 6 N, R 35, E.W.M.  
 Which it is Proposed to Irrigate.

Scale 1" = 660'      Aug. 26, 1916.



2182