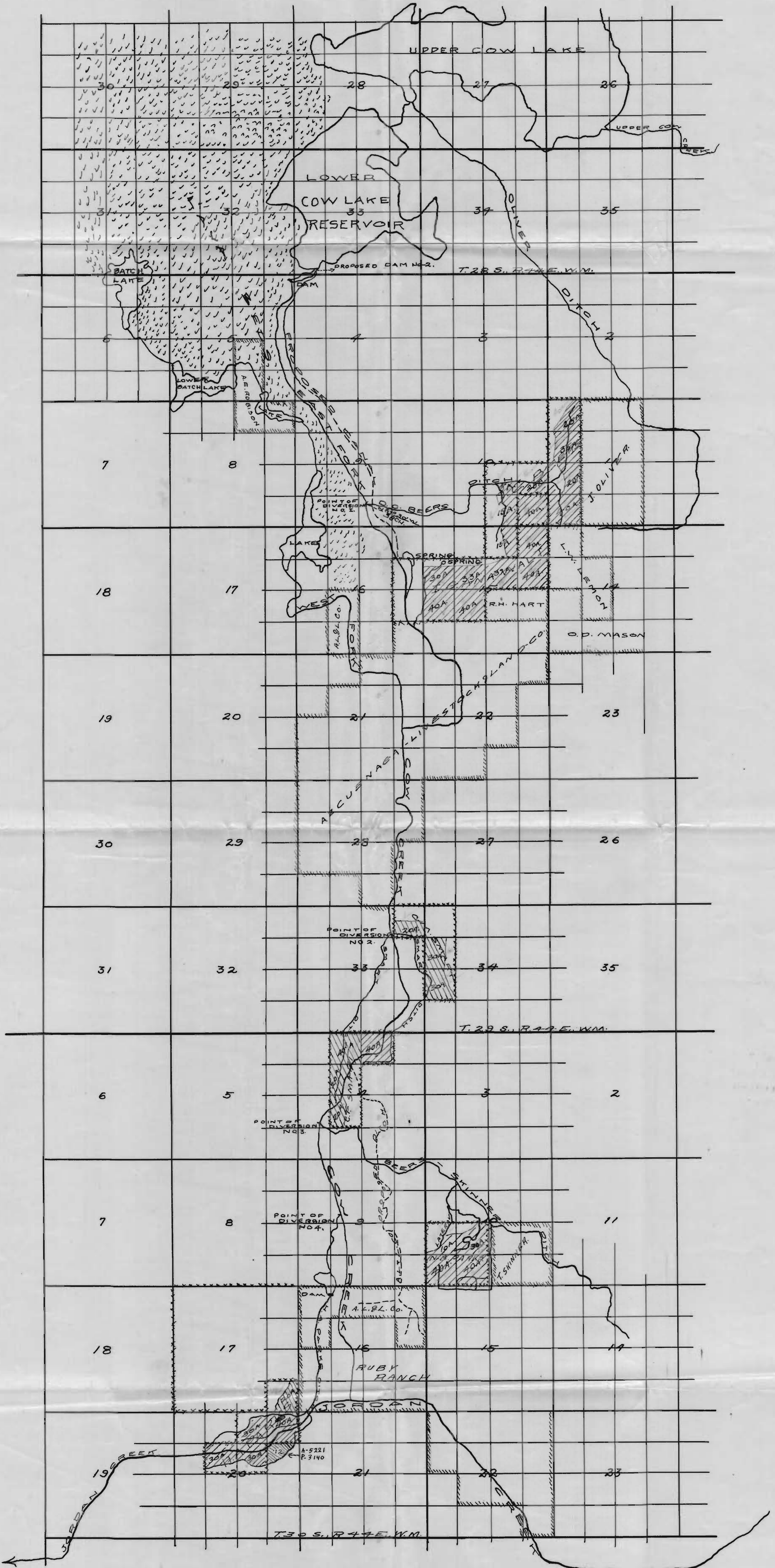


MAP OF IRRIGATION SYSTEM LOWER COW CREEK WATER COMPANY



CERTIFICATE OF SURVEYOR.

I, D. D. Joslyn of Jordan Valley, Oregon, do hereby certify that this map was made from notes taken during an actual survey made by me on February 19th, 1914, and August 20th, 1916, and that it correctly represents the works described in the accompanying application, together with the location of streams and ditches in the immediate vicinity, and has written thereon the area in each smallest legal subdivision which it is proposed to irrigate.

D. D. Joslyn SURVEYOR.

September 9th, 1916.

5221
3140

OFFICE OF STATE ENGINEER
RECEIVED
SEP 13 1916
SALEM, OREGON.

LEGEND:-

- | | | |
|-------------|--|-----------------------------------------|
| Land Marked | | owned by applicants. |
| " " | | other ownership. |
| " " | | to be irrigated under new right. |
| " " | | to be irrigated by supplemental supply. |

SCALE:- 2 INCHES = 1 MILE.

3005
R376
3168
3120