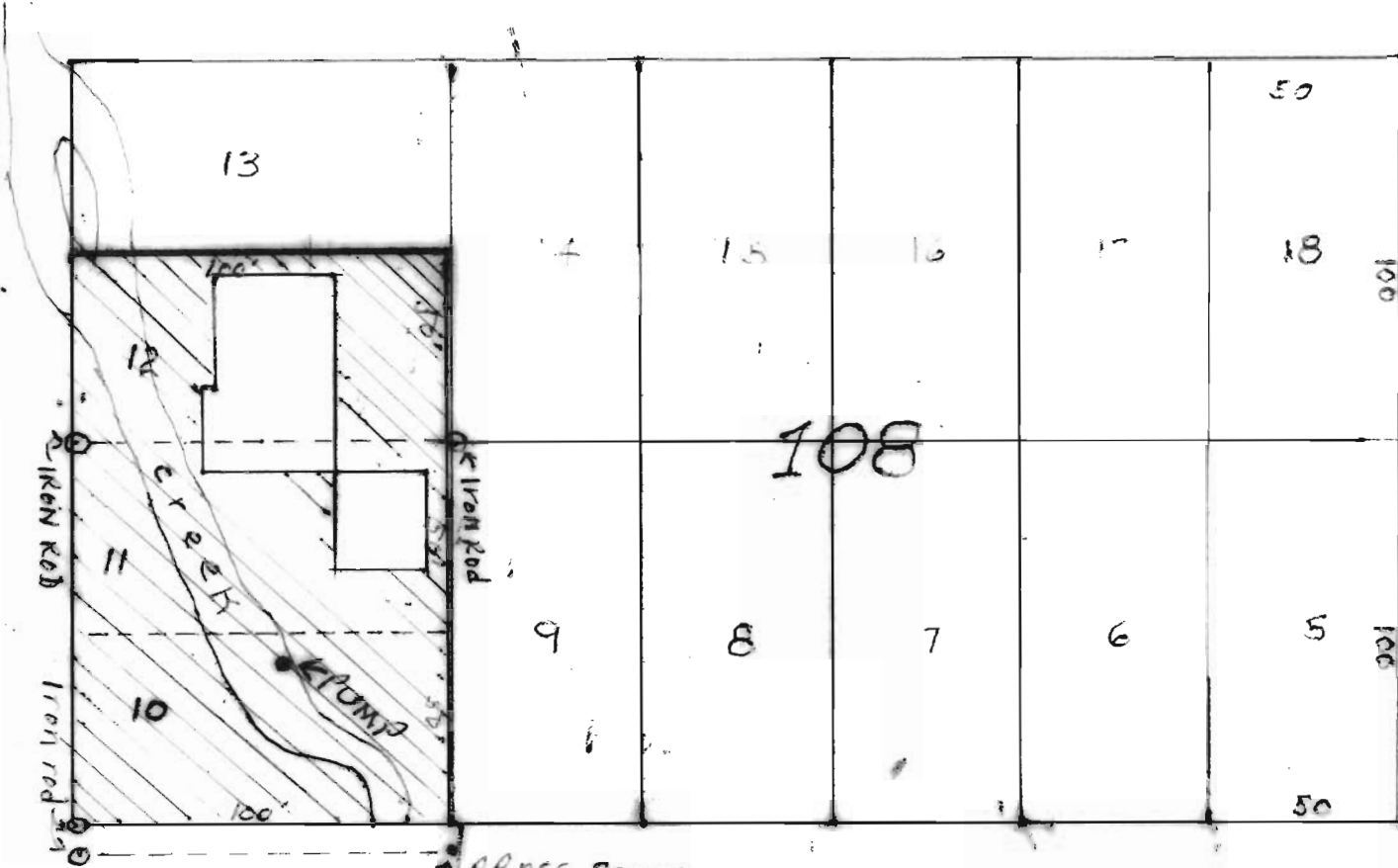


SCALE 1"=50'



S I P I S I AVT



N.W. Corner  
 George Willis  
 OLD  
 (187' N x 172' W)  
 (SE COR SEC 23)

S. E. UMATILLA ST.

Lots 10, 11, + 12 Block 108

Sellwood

S.E. 1/4 Sec 23, T. 15, R. 1E, W.M.

IN MULTNOMAH COUNTY

RECEIVED  
 MAY 22 1966  
 CIVIL ENGINEER  
 JASON

Application No. 42559  
 Permit No. 31607