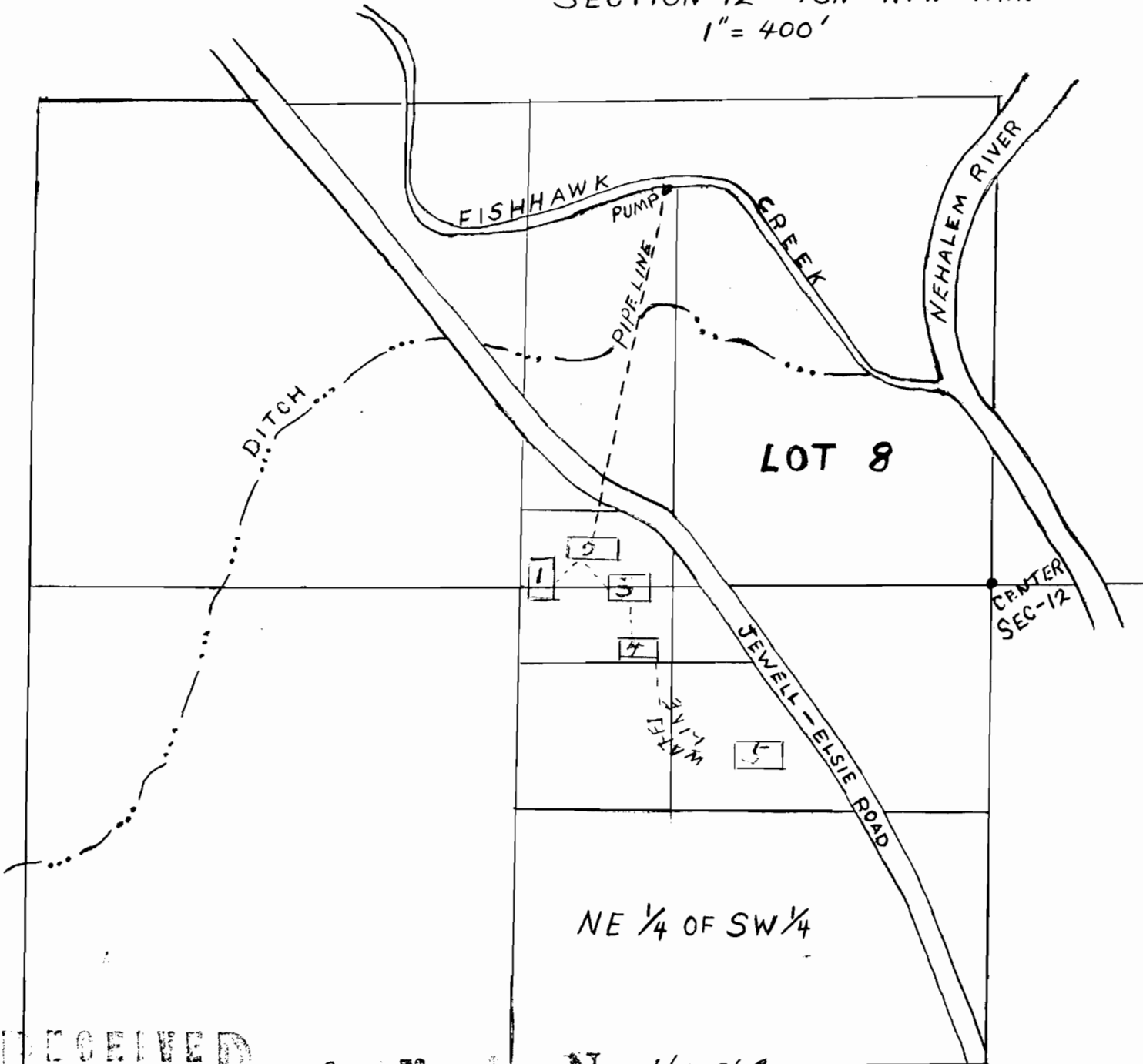


WATER USED IN BUILDINGS OF JEWELL SCHOOL.#8.

- #1 - GYMNASIUM
- #2 - HIGH SCHOOL
- #3 - GRADE SCHOOL
- #4 - HOUSE
- #5 - HOUSE

SECTION 12 TSN R7W WM.
1" = 400'



RECEIVED
SEP 26 1908
CIVIL ENGINEER
OREGON

Application No. 42561
Permit No. 31810