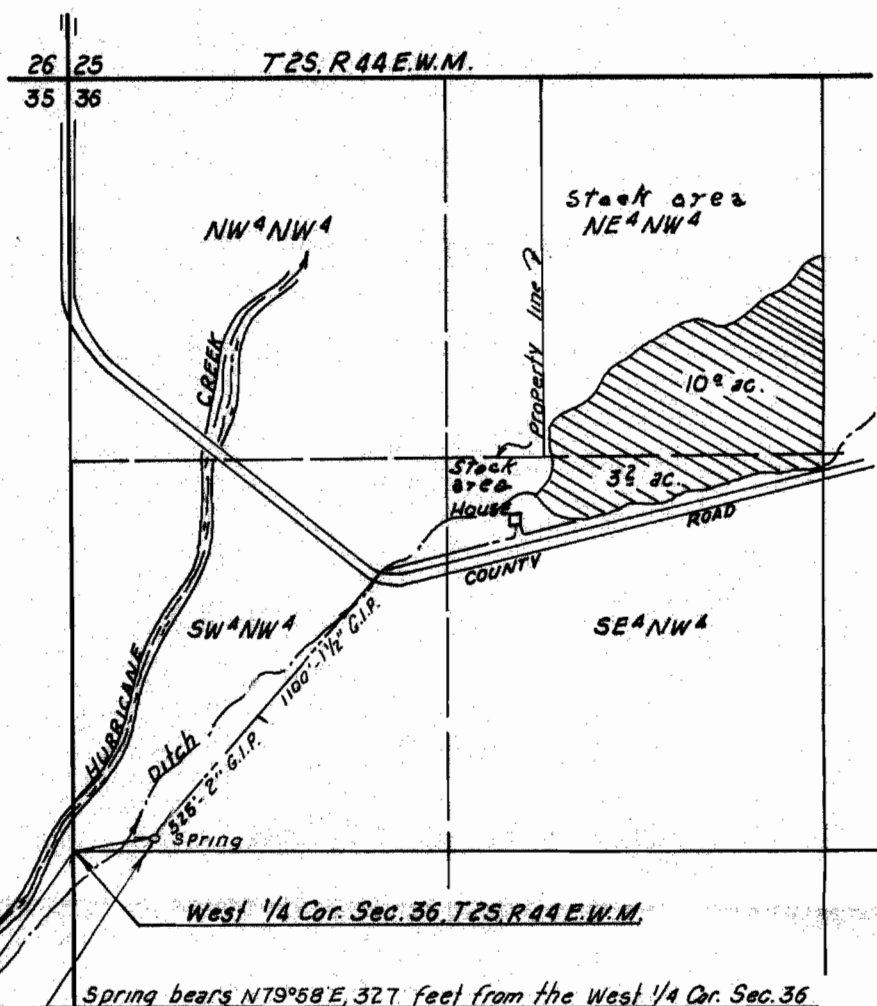


RECEIVED
 OCT 26 1966
 STATE ENGINEER
 OREGON



Scale: 1" = 660'

P.O.D. of ditch bears S36°31'W,
 500 feet from W 1/4 Cor. Sec. 36

RECEIVED
 OCT 26 1966
 STATE ENGINEER
 OREGON

Surveyed and platted for Grace Bartlett
 Date: Oct. 21, 1966
 By: Verne H. Russell - Reg. Land Surveyor - Ore. No 427

REGISTERED
OREGON
 LAND SURVEYOR

Verne H. Russell

OCTOBER 4, 1967
VERNE H. RUSSELL
 427

RECEIVED
 OCT 26 1966
 STATE ENGINEER
 OREGON

Application No. **43022**
 Permit No. **32163** + **43023**
32164