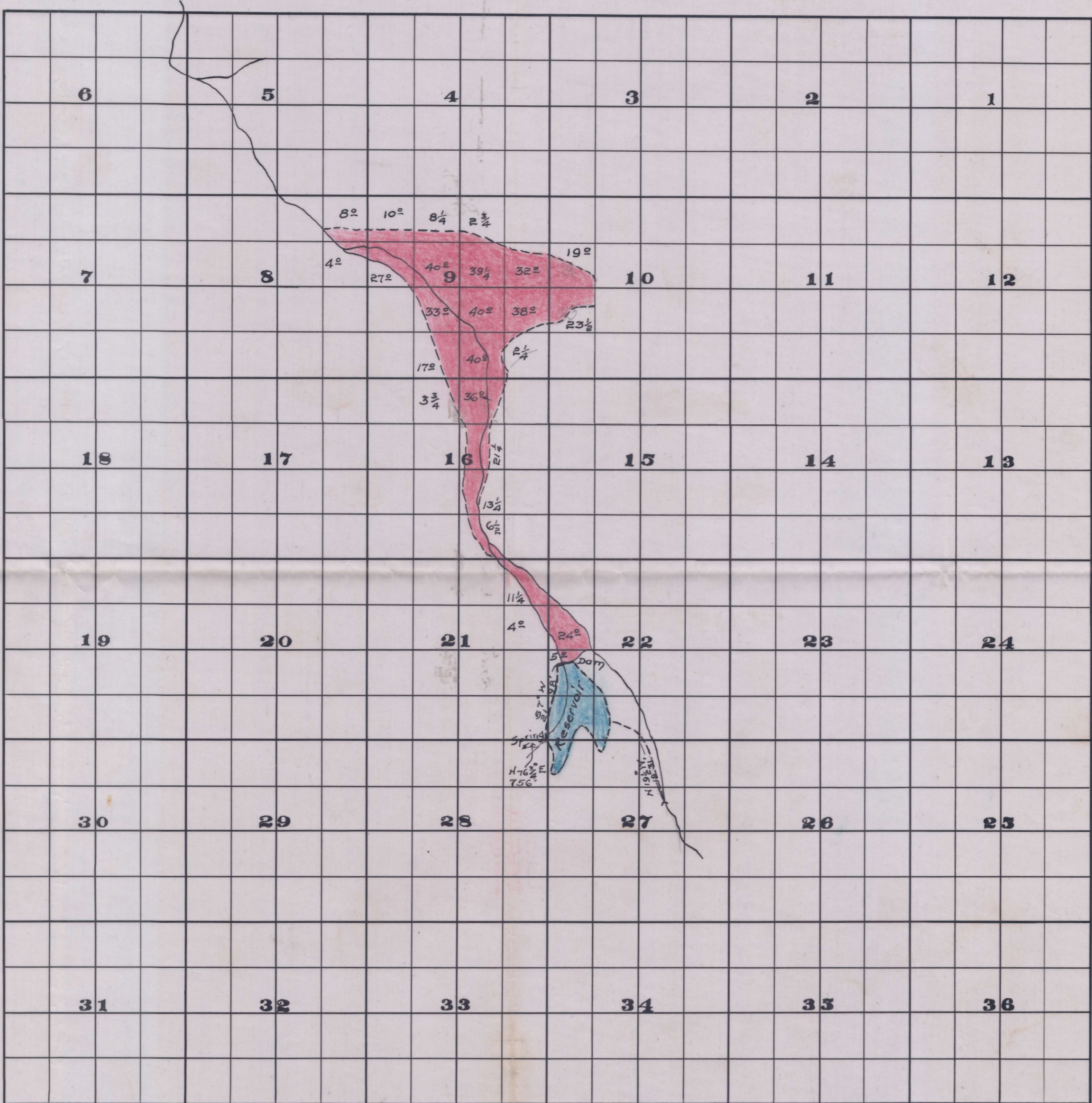


Township 11 S

Range 15 E W.M.



Scale 1" = 40 ch.

To Accompany Application of BALDWIN SHEEP COMPANY
Total Acres = 509

OFFICE OF STATE ENGINEER
RECEIVED
JAN 24 1913
SALEM, OREGON

Application No. 5365
Permit No. 3243

2300