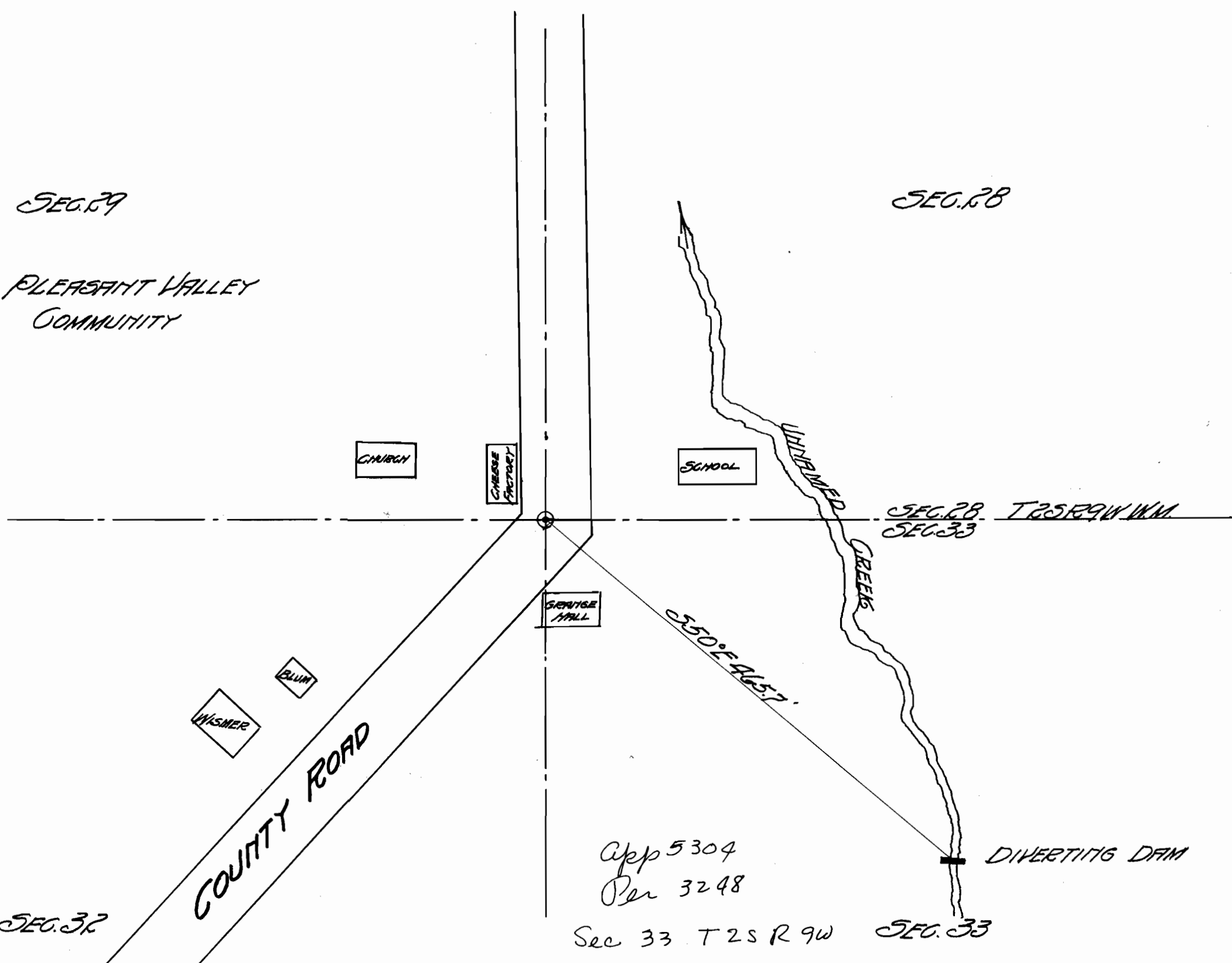


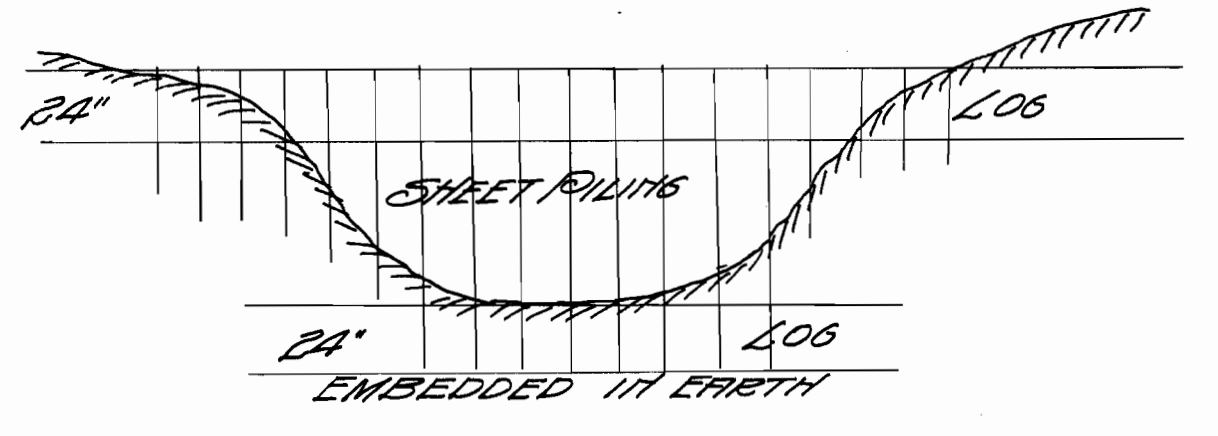
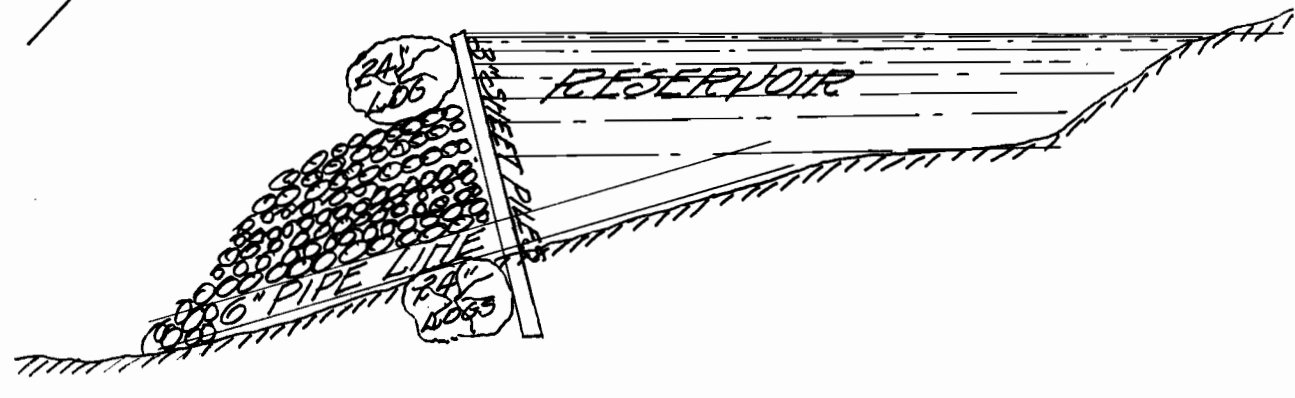
NO. 52

T60
O.C. WISMER WATER RIGHT
533 T2S R9W WM.



5304
3248

App 5304
Per 3248
Sec 33 T2S R9W



I, HARRY P. KERR, A SURVEYOR OF TILLAMOOK OREGON, DEPOSE AND SAY THAT THIS MAP WAS MADE FROM NOTES TAKEN DURING AN ACTUAL SURVEY MADE BY ME ON THE 18TH DAY OF DECEMBER AND THAT IT CORRECTLY DELINEATES THE WORKS SHOWN AND DESCRIBED IN THE ACCOMPANYING APPLICATION.

Harry P. Kerr

SUBSCRIBED AND SWORN TO BEFORE ME THIS 21st DAY OF DEC. 1916
J. H. Boyner,
NOTARY PUBLIC FOR OREGON