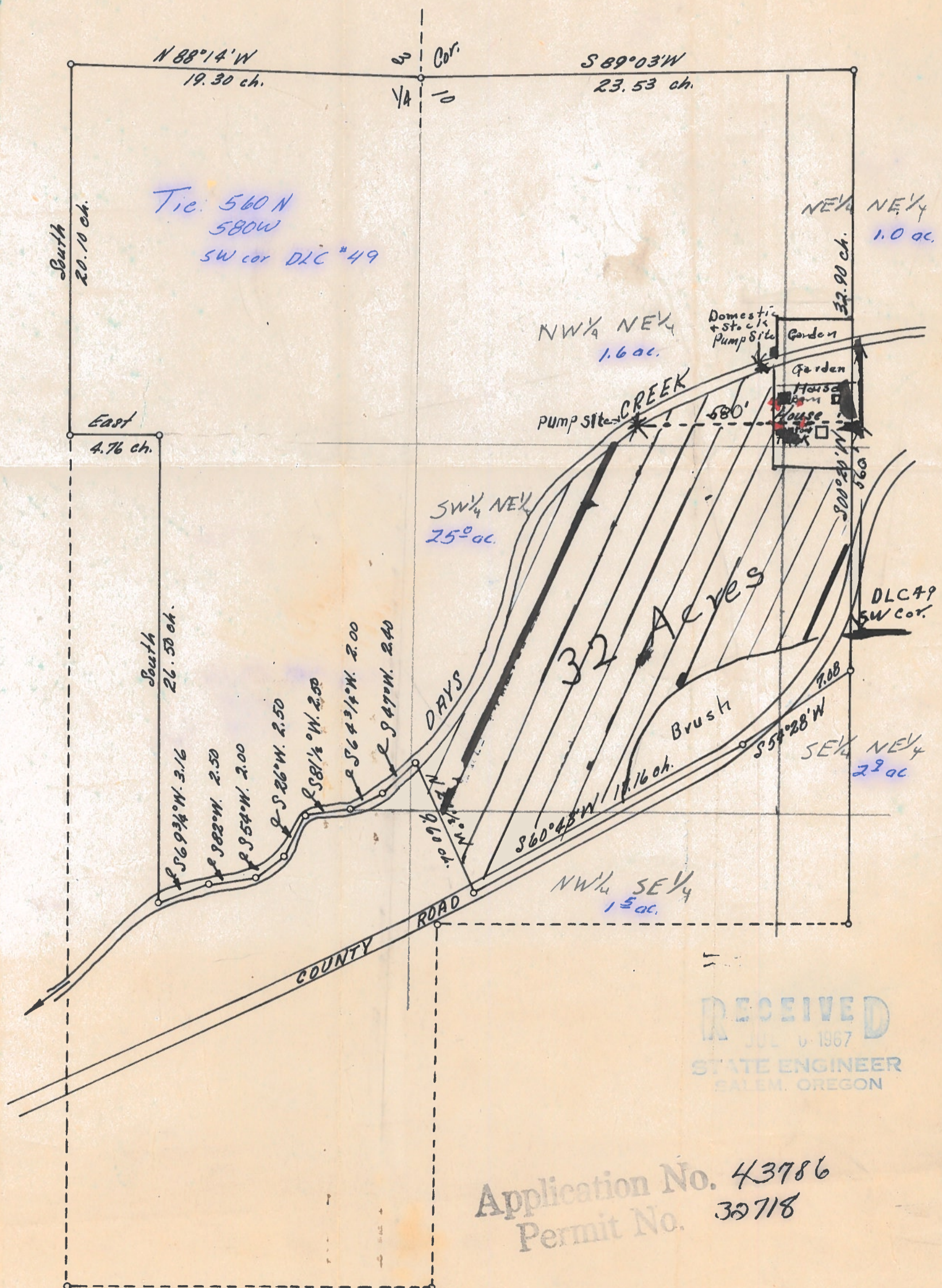


MAP OF
W. E. ST JOHN RANCH
 in
SEC'S 3 & 10 - T. 30 S. - R. 4 W. - W. M.
 Douglas Co, Oregon.

RECEIVED
 SEP 8 1967
 STATE ENGINEER
 SALEM, OREGON



Scale 1 in. = 6 ch.

* Stock Tanks

RECEIVED
 JUL 6 1967
 STATE ENGINEER
 SALEM, OREGON

Application No. 43786
 Permit No. 32718