

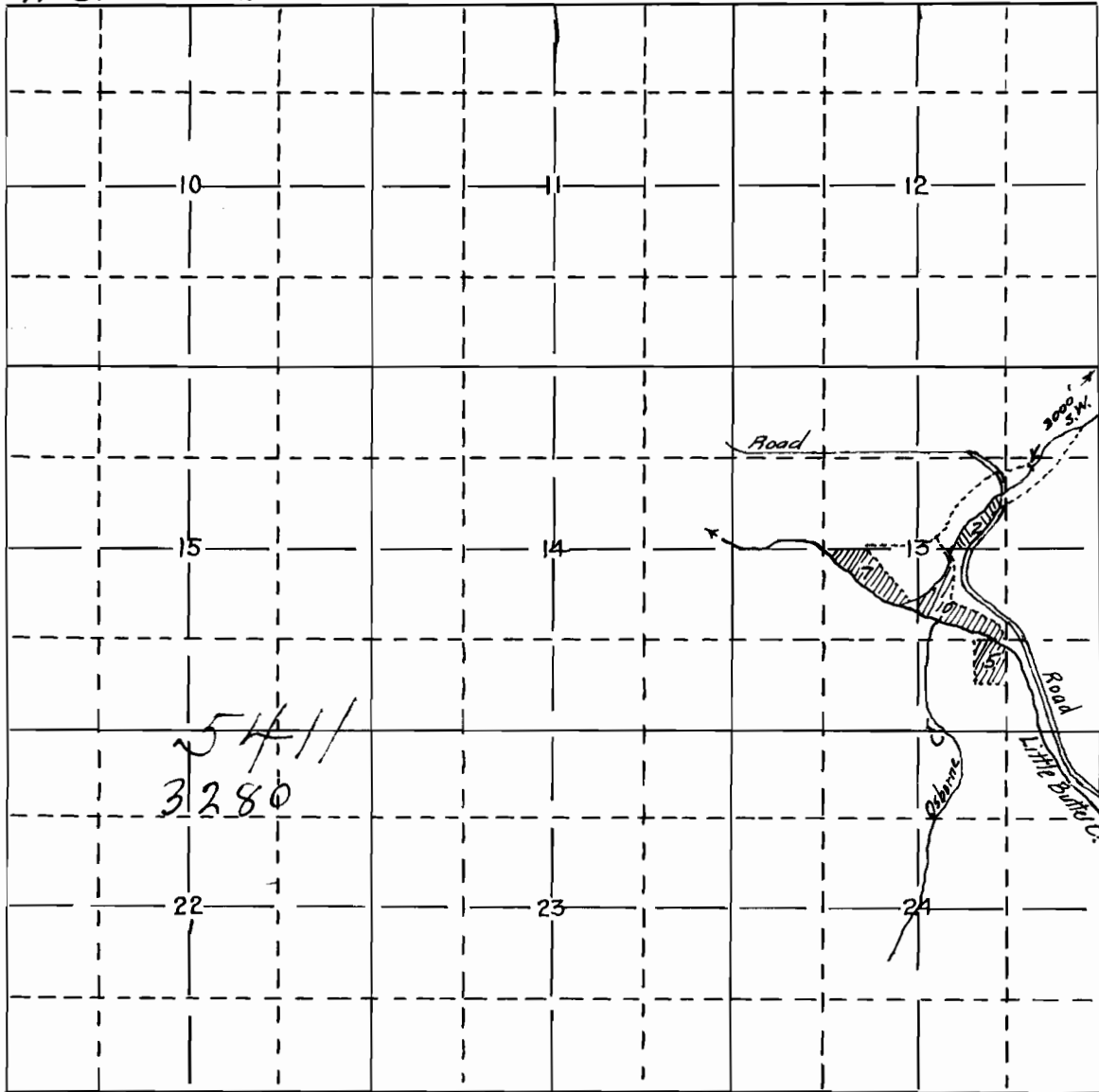
Map

Accompanying application of Gust NYGREN for Permit to appropriate the flood and surplus waters of Salt Creek tributary to Little Butte Creek tributary of Rogue River Jackson County, Oregon.

Medford, Oregon.

January 1917.

TP 36 S. R 1 E. W. M.



Map made from notes furnished by Gust Nygren of lands of his still available for irrigation and notes taken from prior applications showing these lands not covered by them and said map shows lands correctly, and all Streams and ditches in immediate vicinity

Fred. N. Cummings C.E.
Medford, Oregon.