

55
3
2

Map of Mrs Hattie J. Davis' Irrigation Ditches
and Location of Diversion or Headgates

OFFICE OF STATE ENGINEER
MAY 2 0 1910

State of Oregon ss.
Umatilla County

I J.W. Kimbrell being first duly sworn do depose and say
that this map was made from notes taken during an
actual survey made by me on the 1st day of June 1910
and that it correctly represents the area in each smallest
legal subdivision which is irrigated and proposed to irrigate

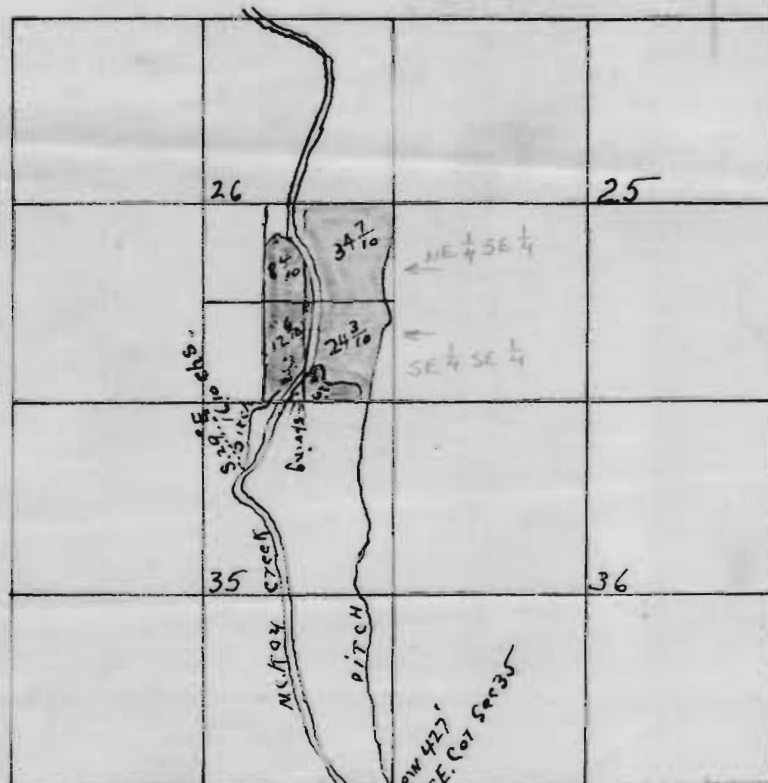
John W. Kimbrell

Subscribed and sworn to before me this 10 day of June 1910

Frank Salinger
County Clerk

5432
3303

2
7
3
9



Explanation

- Lands Shaded Red Irrigated
- Lands Shaded Green Propose to Irrigate

State of Oregon }
County of Umatilla } ss.

I, R. T. Brown, County Clerk in and for said County and
state, do hereby certify that the foregoing Map of Mrs Hattie
J. Davis' Irrigation Ditches and Location of Diversion
or Headgates, has been by me compared with the orig-
inal, and that it is a correct transcript therefrom, and
of the whole of such original, as the same appears of
Record and on file at my office and in my custody.

In Testimony Whereof I have hereunto set my hand
and affixed the seal of said Court this 15th day of
February, A. D. 1917
R. T. Brown, Clerk

scale 40 chs 1"

27351