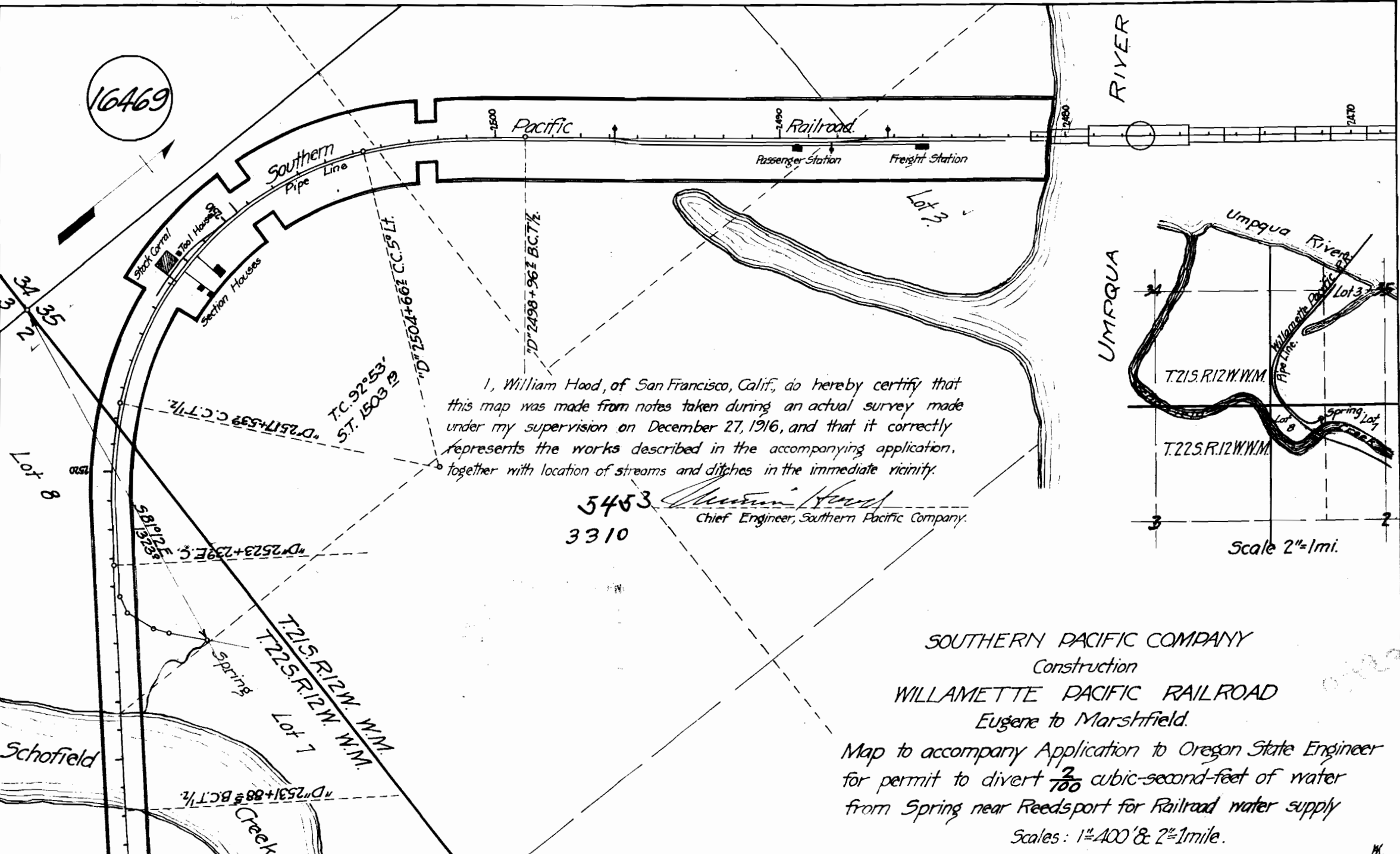
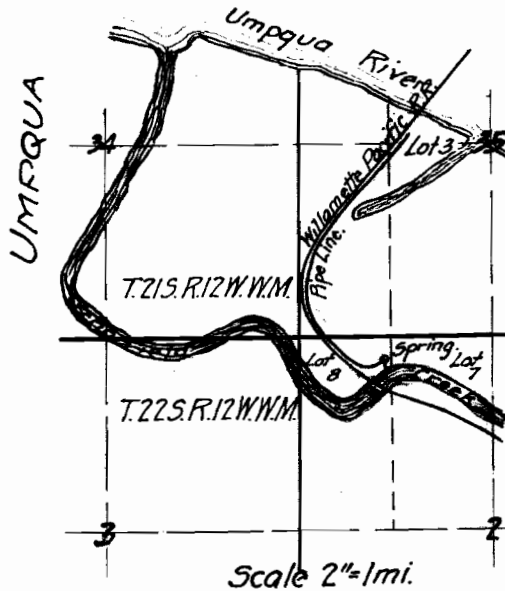


16469



I, William Hood, of San Francisco, Calif, do hereby certify that this map was made from notes taken during an actual survey made under my supervision on December 27, 1916, and that it correctly represents the works described in the accompanying application, together with location of streams and ditches in the immediate vicinity.

5453  
3310  
*William Hood*  
Chief Engineer, Southern Pacific Company.



SOUTHERN PACIFIC COMPANY  
Construction  
WILLAMETTE PACIFIC RAILROAD  
Eugene to Marshfield.

Map to accompany Application to Oregon State Engineer for permit to divert  $\frac{2}{100}$  cubic-second-feet of water from Spring near Reedsport for Railroad water supply  
Scales: 1"=400' & 2"=1mile.