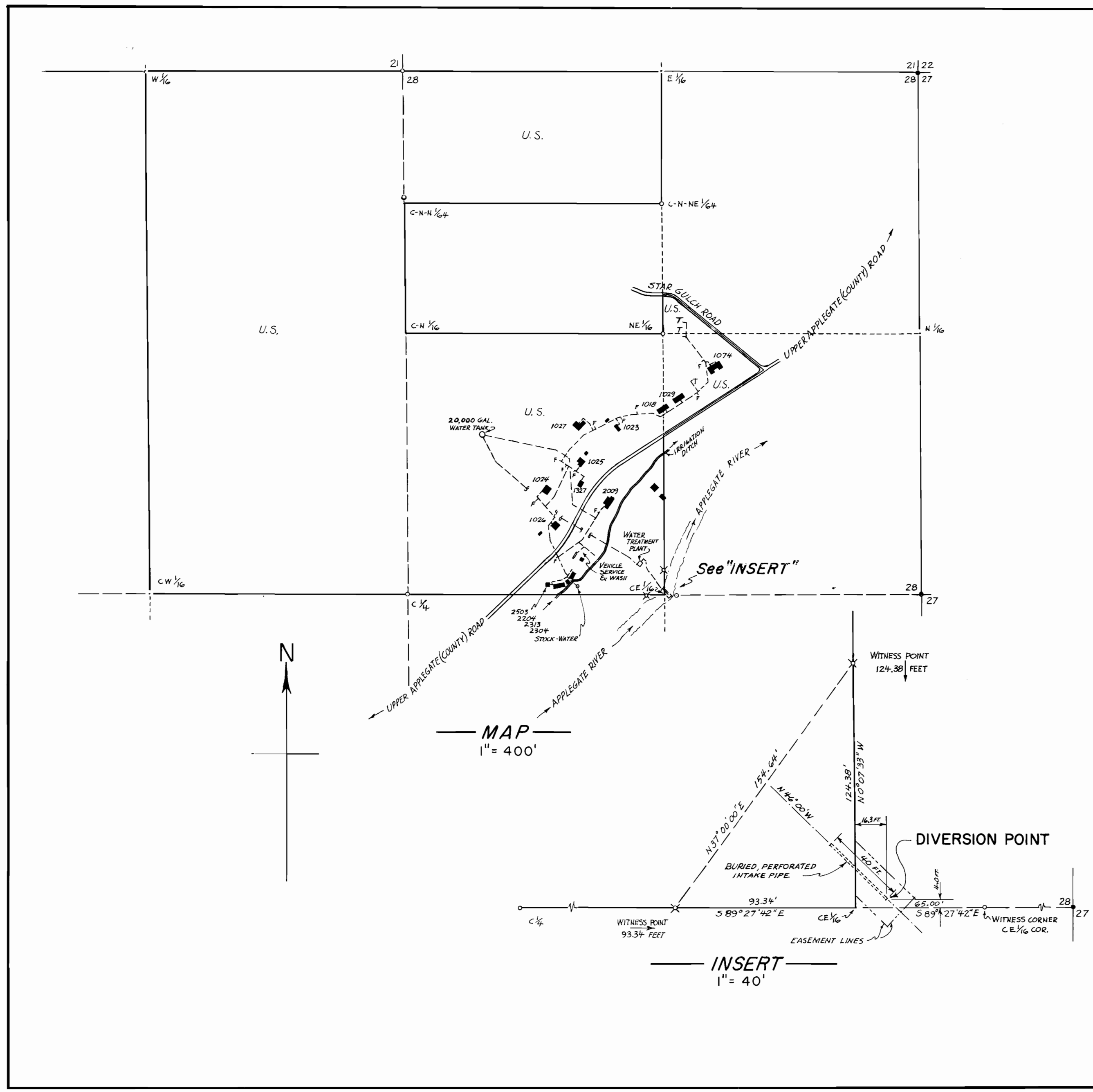


TRIM PRINT



NOTE: LAND LINE AND CORNER DATA TAKEN FROM "SURVEY OF THE EAST 1/2 OF THE N.W. 1/4, NORTH 1/2 OF THE N.W. 1/4 OF THE N.E. 1/4 AND THE S.W. 1/4 OF THE N.E. 1/4 OF SECTION 28, T. 39 S., R. 3 W., W.M., JACKSON COUNTY, OREGON, FOR (the) ROGUE RIVER NATIONAL FOREST, STAR RANGER STATION" BY J.A. HOFFBUHR, REG. L.S., MEDFORD, ORE., JULY 26, 1967 AS FILED WITH THE JACKSON COUNTY SURVEYOR, AUG. 1, 1967.

USE AREAS SHOWN ALL LIE WITHIN THE N.E. 1/4 OF SECTION 28, T39S, R3W, W.M.; INCLUDE PART OF THE S.E. 1/4 1/4, AND THAT PART OF THE N.E. 1/4 1/4 SOUTH AND EAST OF THE STAR GULCH ROAD, AND THAT PART OF THE S.E. 1/4 1/4 BOUNDED ON THE S.E. BY THE UPPER APPLIGATE (COUNTY) ROAD, ON THE N.E. BY THE STAR GULCH ROAD.

- 1234 BUILDING IDENT. NO.
- T TRAILER SERVICE
- F FIRE PROTECTION STANDPIPE
- BUILDING
- 2 1/2" x 30" GALV. IRON PIPE W/ BRASS DISC
- ⊗ BRASS DISC SET IN CONCRETE
- OTHER CORNER MARKER

MAP
TO ACCOMPANY APPLICATION FOR WATER RIGHT FOR WATER SUPPLY TO THE WATER SERVICE SYSTEM OF THE
STAR RANGER STATION COMPLEX
APPLIGATE RANGER DISTRICT, ROGUE RIVER NATL. FOREST

Drawn: J. O'Connor at Star R. S., 12/19/67
Submitted: A.H. Leuthausen, District Ranger, 12-19-67.

444031
3-31-79

TRIM PRINT