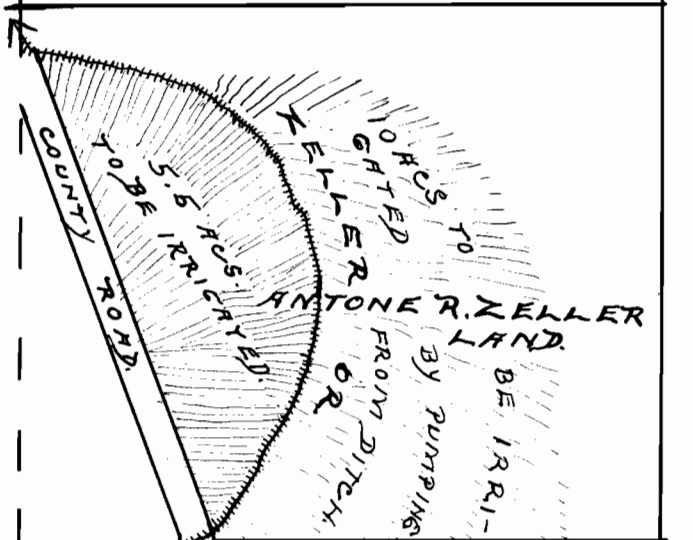


T 9 S, R 40 E, W. M., ORE.



CATHOLIC CEMETERY - 21

OLD RUCKLE DITCH

WEBBER DITCH

SUTTON HEAD OF DITCH & DAM SITE
S 64° 53' W, 49.0 FT

1/4 SEC. COR. ON SOUTH LINE OF SEC. 21, T 9 S, R 40 E, W. M., ORE. CREEK.

SKETCH

SHOWING

THE LOCATION OF THE ANTONE R. ZELLER LAND IN SEC. 21, T 9 S, R 40 E, W. M., BAKER CO., ORE.

SCALE, ONE INCH = 6.00 CHS.
SURVEY MADE, APRIL 13, 1917.

Ira L. Hoffman,
County Surveyor.

CERTIFICATE OF SURVEYOR.

I, IRA L. HOFFMAN OF BAKER, ORE. DO HEREBY CERTIFY THAT THIS SKETCH WAS MADE FROM NOTES TAKEN FROM AN ACTUAL SURVEY MADE BY ME ON APRIL 13, 1917 AND THAT IT CORRECTLY REPRESENTS THE DATA SHOWN THEREON, TOGETHER WITH THE LOCATION OF STREAMS & OTHER DITCHES IN THE IMMEDIATE VICINITY AND HAS WRITTEN THEREON THE AREA IN EACH LEGAL SUBDIVISION WHICH IT IS PROPOSED TO IRRIGATE.

Ira L. Hoffman,
County Surveyor.

5493
3341