

RECEIVED

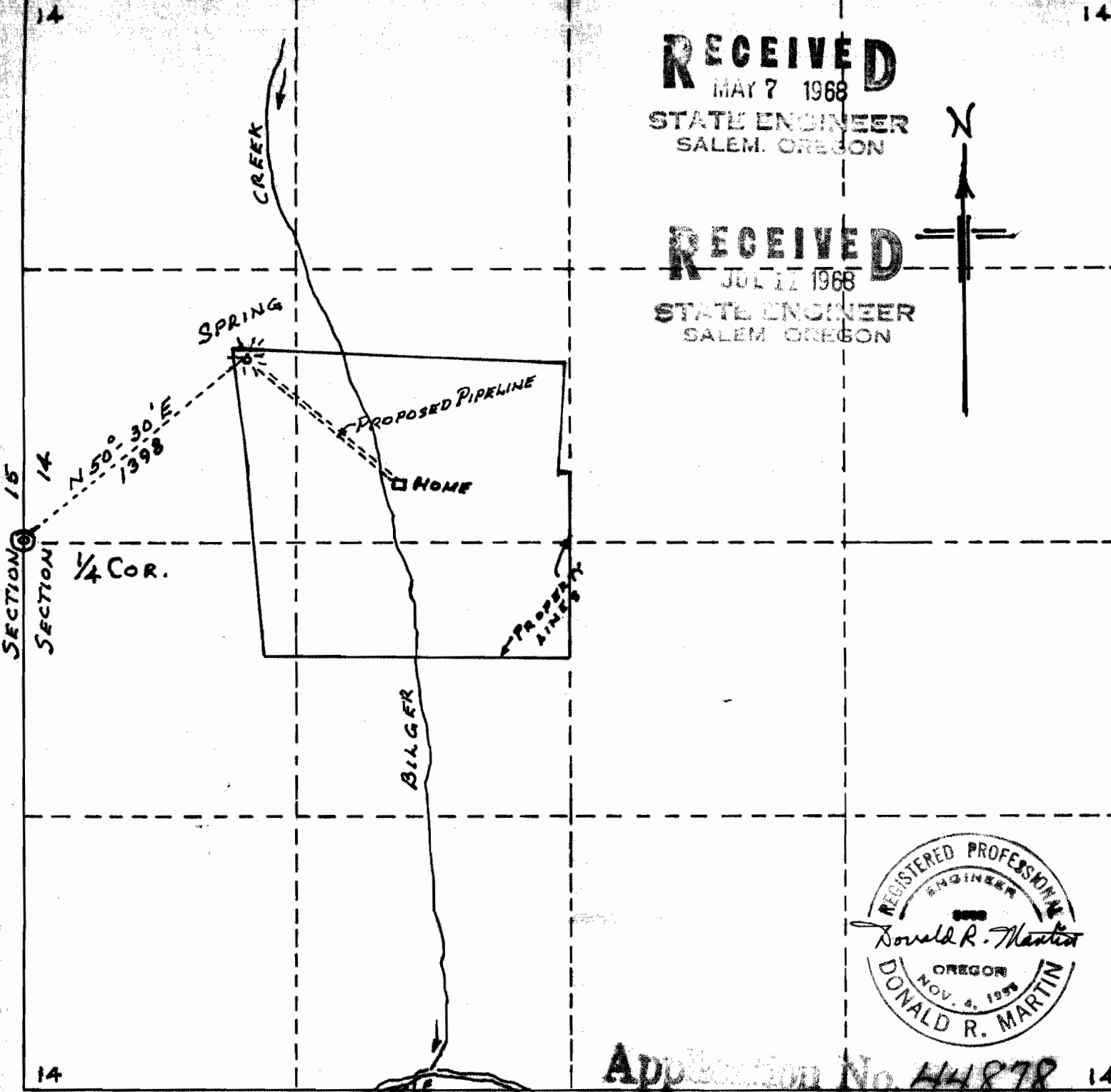
MAY 7 1968

STATE ENGINEER  
SALEM, OREGON

RECEIVED

JUL 17 1968

STATE ENGINEER  
SALEM, OREGON



ADDITIONAL No. 44878

33554

# WATER SPRING DIVERSION MAP

## CALVIN D. CLACK

MYRTLE CREEK, OREGON

SEC. 14 T29S R5W W.M. DOUGLAS COUNTY, ORE.

SCALE: 8" = 1 MILE

MARTIN ENGINEERING SERVICE - MYRTLE CREEK, OREGON

JANUARY 1968