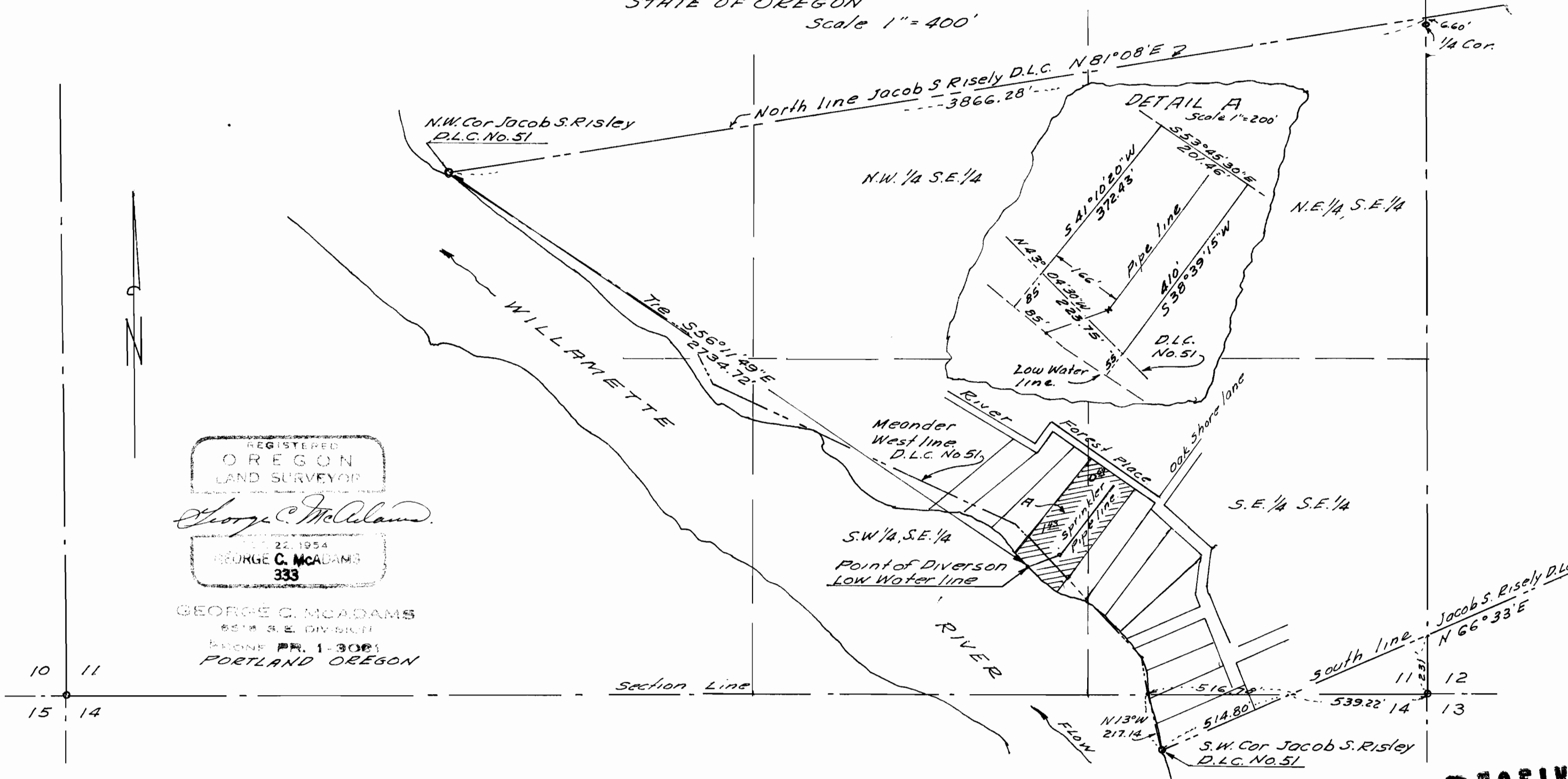


LOCATION OF DIVERSION OF WATER.  
 FOR IRRIGATION OF TAX LOTS 25-3 & 25-3-1-1  
 IN THE JACOBS. RISELY D.L.C. No. 51, IN S.E. 1/4 & S.W. 1/4, S.E. 1/4  
 SEC. 11, T2S., R.1E., W.M. CLACKAMAS COUNTY,  
 STATE OF OREGON  
 Scale 1" = 400'



REGISTERED  
 OREGON  
 LAND SURVEYOR  
*George C. McAdams*  
 22, 1954  
 GEORGE C. McADAMS  
 333  
 GEORGE C. McADAMS  
 6518 S.E. DIVISION  
 PHONE PR. 1-3081  
 PORTLAND OREGON

**RECEIVED**  
 JUN 4 1968  
 STATE ENGINEER  
 SALEM OREGON

44941  
 33585