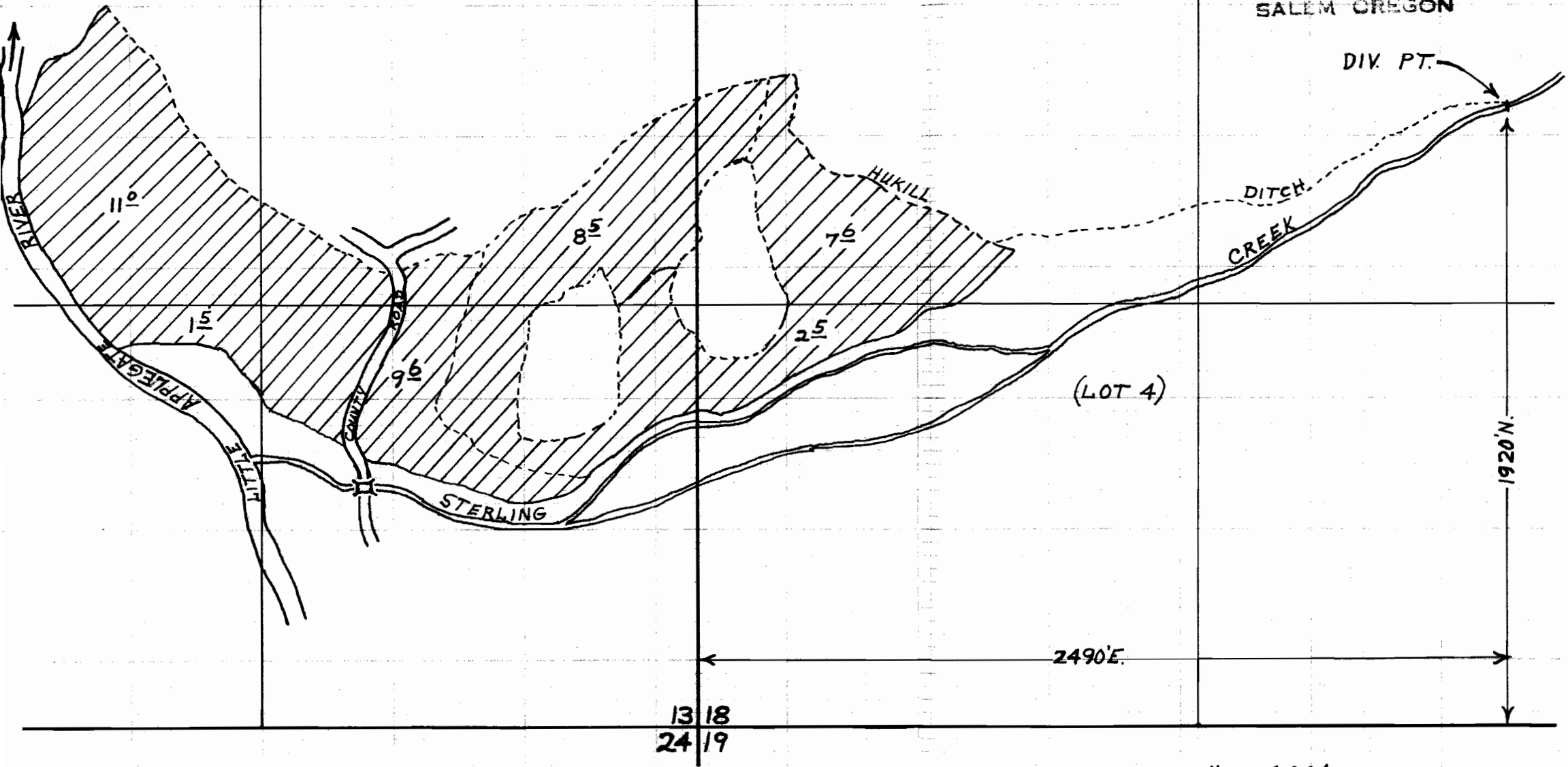


T. 39 S., R. 3 W., W.M.

T. 39 S., R. 2 W., W.M.

(LOT 3)

RECEIVED
MAY 31 1968
STATE ENGINEER
SALEM OREGON



(LOT 4)

2490'E.

1920'N.

13 18
24 19

SCALE: 1" = 400'

5-23-68

LILLIAN F. HUKILL

Application No. 45011
Permit No. 83636